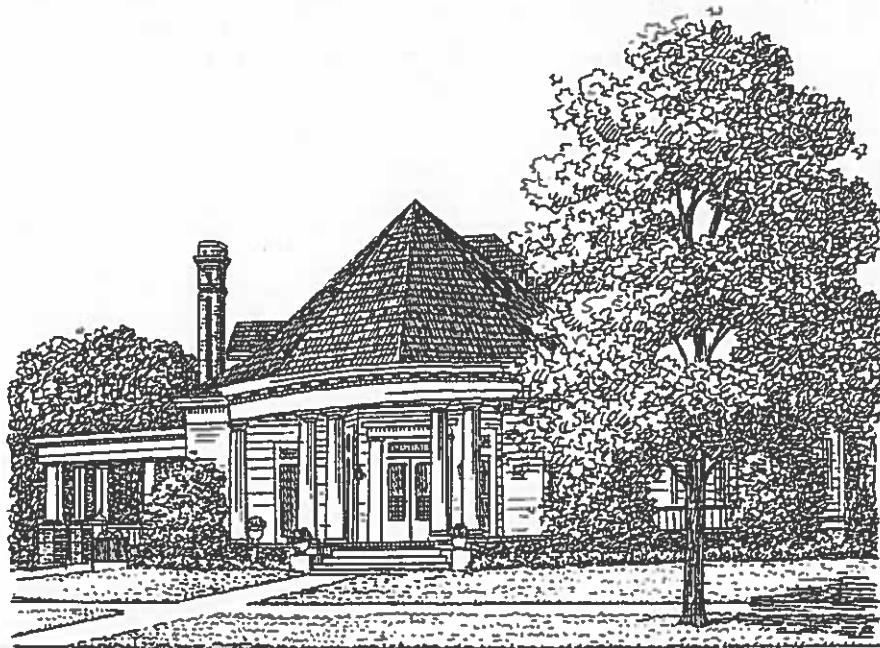


CREMATION AND FUNERAL PACKAGES

Prices Effective: March 5, 2019



Watson-Mathews Funeral Home

322 N. Dooly Street, P.O. Box 283

Montezuma, Georgia 31063

Phone: (478) 472-8191

Fax: (478) 472-2190

Email: watsonmathewsfh@windstream.net

Webiste: www.watsonmathewsfuneralhome.com

BURIAL PACKAGES

Watson-Mathews Funeral Home

Phone (478) 472-8191 Fax (478) 472-2190

Graveside Service with 1 Hour Visitation at the Funeral Home

Package A - \$7,000.00

Basic Service of Funeral Director and Staff, Visitation period one hour prior to service, Removal of loved one within a 50 mile radius of the Funeral Home, Embalming, Cosmetizing, Dressing, Casketing of remains, 100 Funeral Bulletins, 50 Acknowledgement cards, Register Book, Graveside Ceremony at a Cemetery within a 50 mile radius of the funeral home, Hearse, a 20 gauge steel Gemini casket with crepe interior, (comes in several colors) Opening and Closing of the Grave, Regular Concrete Vault with 2 Tents and 24 Chairs. (Does not include obituaries in newspapers, taxes on merchandise or certified death certificates, clergy or musician honorariums, flowers, or cemetery charges)

Graveside Service with No Visitation

Package A - \$6,500.00

Basic Service of Funeral Director and Staff, Removal of loved one within a 50 mile radius of the Funeral Home, Embalming, Cosmetizing, Dressing, Casketing of remains, 100 Funeral Bulletins, 50 Acknowledgement cards, Register Book, Graveside Ceremony at a Cemetery within a 50 mile radius of the funeral home, Hearse, a 20 gauge steel Gemini casket with crepe interior, (comes in several colors) Opening and Closing of the Grave, Regular Concrete Vault with 2 Tents and 24 Chairs. (Does not include obituaries in newspapers, taxes on merchandise or certified death certificates, clergy or musician honorariums, flowers, or cemetery charges)

Full Traditional Burial Funeral with Sameday Visitation (Chapel or Church)

Package C - \$7,500.00

Basic Service of Funeral Director and Staff, Visitation period one hour prior to service, Removal of loved one within a 50 mile radius of the Funeral Home, Embalming, Cosmetizing, Dressing, Casketing of remains, 100 Funeral Bulletins, 50 Acknowledgement Cards, Register Book, Funeral Ceremony at a Church within a 50 mile radius of the funeral home or Chapel service, Hearse, a 20 gauge steel Gemini casket with crepe interior (comes in several colors) Opening and Closing of the Grave, Monticello Vault with 2 Tents and 24 Chairs. **(Does not include obituaries in newspapers, taxes on merchandise or certified death certificates, clergy or musician honorariums, flowers, or cemetery charges)**

Full Traditional Burial Funeral with Evening Visitation (Chapel or Church)

Package C - \$8,000.00

Basic Service of Funeral Director and Staff, 2 Hour Visitation Period in the Evening, Removal of loved one within a 50 mile radius of the Funeral Home, Embalming, Cosmetizing, Dressing, Casketing of Remains, 100 Funeral Bulletins, 50 Acknowledgement Cards, Register Book, Funeral Ceremony at a Church within a 50 mile radius of the funeral home or Chapel service, Hearse, a 20 gauge steel Gemini casket with crepe interior (comes in several colors) Opening and Closing of the Grave, Monticello Vault with 2 Tents and 24 Chairs. **(Does not include obituaries in newspapers, taxes on merchandise or certified death certificates, clergy or musician honorariums, flowers, or cemetery charges)**

(Oversized Caskets & Vaults are additional cost.)

Cemetery items not included: Remove & Reset Slab - \$350.00

Remove & Reset Concrete - \$400.00

Death Date on Headstone/Slab - \$175.00

Georgia Certified Death Certificates - \$25.00 First Copy/ \$5.00 Each Additional Copy

CREMEATION PACKAGES

Watson-Mathews Funeral Home – Montezuma, Georgia

Phone (478) 472-8181 Fax (478) 472-2190

Basic Cremation Package

Package A - \$1,800.00

The Basic Package is the simplest way to have your loved one cremated, included in the Package is; Services of licensed professional and staff, Transportation of deceased into our care (within a 50 mile radius of the funeral home), Use of Refrigeration, Filing of all necessary paperwork, Cardboard Alternative Cremation Container, Cremation, Cremains returned in a Temporary Plastic Urn. **(Does not include Embalming, Viewing/Visitation, Funeral Rites or services, obituaries in newspapers, taxes on merchandise, or certified death certificates)**

Cremation with Memorial Service

Package B - \$2,550.00

Services of Licensed Funeral Director and Staff, Transportation of deceased into our care, Refrigeration of Deceased, Alternative Cremation Container, Cremation, Filing of all necessary paperwork, Temporary Plastic Urn, Memorial Service at a church within a 50 mile radius of the funeral home or chapel service, 100 Funeral Bulletins, 50 Acknowledgement Cards and a Register Book. **(Does not include obituaries in newspapers, taxes on merchandise or certified death certificates, clergy or musician honorariums, flowers or cemetery charges.)**

Open Casket Funeral with Cremation to Follow

Package C – 6,000.00

Basic Service of Funeral Director and Staff, Removal of loved one within a 50 mile radius of the Funeral Home, Embalming), Cosmetizing, Dressing, Casketing of remains, use of the Rental Casket, 100 Funeral Bulletins, 50 Acknowledgement Cards, Register Book, Viewing/Visitation 1 Hour prior to service time, Funeral Ceremony at a Church within a 50 mile radius of the funeral home or Chapel service, Hearse, Refrigeration of Deceased, Alternative Cremation Container, Cremation, Filing of all necessary paperwork, Temporary Plastic Urn. **(Does not include Obituaries in newspapers, taxes on merchandise or certified death certificates, clergy or musician honorariums, flowers or cemetery charges.)**

Other Charges: Open & Close Cremation Grave Only - \$150.00

Open & Close Cremation Grave with Tent, Chairs & Setup - \$500.00

Watson-Mathews Funeral Home

322 N. Dooly Street, P.O. Box 283

Montezuma, GA 31063

Phone (478) 472-8191

Fax 9478) 472-2190

Email: watsonmathewsfh@windstream.net

Website: www.watsonmathewsfuneralhome.com

Payment Policy

Watson-Mathews Funeral Home has established a uniform payment policy to serve families fairly and to prevent misunderstandings. This payment policy enables us to contain our costs to all families we serve. If a verifiable and assignable insurance policy is not available, then the total cost for the funeral is required before services. **Arrangements payable by an estate will not be accepted.** The following methods of payment are available:

1. Pre-arranged Funeral Plan (unpaid balance due at time of arrangements).
2. Cash/Check (If paid in full at time of arrangements, we offer a 4% discount, on Service and Merchandise)
3. Verifiable and Assignable Insurance Policy -
(Assignment funding thru Express Funeral Funding)
4. Major Credit Cards (Visa, Mastercard, Discover & American Express).
5. Financing available through First Franklin Financial in Montezuma.

Monthly payments are not accepted

Office Hours

9 AM – 5 PM (Monday – Friday)
Saturday & Sunday by Appointment
We may be reached by phone anytime

*Watson-Mathews Funeral Home
Montezuma, GA 31063*

Watson-Mathews Service Selection	Chapel or Church Service Evening Visitation	Chapel or Church Service Same Day Visitation	Graveside Service No Visitation	Memorial Service	Direct Cremation	Week-Day Simple Cremation (Cash/Check only)	Immediate Burial	Forwarding Remains	Receiving Remains
Service of Funeral Director & Staff	\$2,895.00	\$2,895.00	\$2,895.00	\$1,800.00	\$1,800.00	\$800.00	\$2,395.00	\$1,065.00	\$1,065.00
Embalming	\$700.00	\$700.00	\$700.00					\$700.00	
Dressing & Casketing	\$175.00	\$175.00	\$175.00						
Evening Visitation	\$300.00								
Daytime Visitation									
Chapel or Church Service	\$900.00	\$900.00							
Graveside Service Memorial Service			\$500.00	\$600.00					
Removal	\$250.00	\$250.00	\$250.00	\$250.00	\$250.00	\$250.00	\$250.00	\$250.00	
Hearse	\$295.00	\$295.00	\$295.00						\$195.00
Utility Vehicle	\$180.00	\$180.00	\$180.00				\$180.00		
Lead Vehicle									
Airport Transfer								\$395.00	\$395.00
Temporary Urn				\$40.00	\$40.00	\$40.00			
Crematory Transfer				\$150.00	\$150.00	\$150.00			
Cremation Fee				\$465.00	\$465.00	\$465.00			
Memorial Pkg.				\$150.00					
Cardboard Container				\$95.00	\$95.00	\$95.00			
Other/Misc.								\$285.00	
Total	\$5,695.00	\$5,395.00	\$4,995.00	\$3,550.00	\$2,800.00	\$1,800.00	\$2,825.00	\$2,695.00	\$1,655.00

Price List Effective Dates:	
General Price List	March 5, 2019
Casket Price List	September 20, 2018
Outer Burial Containers	January 2, 2018

GENERAL PRICE LIST



Watson-Mathews Funeral Home

322 N. Dooly Street, P.O. Box 283

Montezuma, Georgia 31063

Telephone: 478-472-8191

Fax: 478-472-2190

License Number: 374

Prices effective March 5, 2019

The goods and services shown below are those we can provide to our customers. You may choose only the items you desire. However, any funeral arrangements you select will include a charge for our basic services and overhead. If legal or other requirements mean you must buy any items you did not specifically ask for, we will explain the reason in writing on the statement we provide describing the funeral goods and services you selected.

MINIMUM SERVICES OF THE FUNERAL DIRECTOR AND STAFF

This fee for our basic service and overhead will be added to the total cost of the funeral arrangements you select. (This fee is already included in our charges for direct cremations, immediate burials, and forwarding or receiving the remains.) \$2845.00

The fee includes the following:

Personnel available 24 hours a day, 365 days a year to respond to initial call

Arrangement conference

Coordinating service plans with cemetery, crematory, and/or other parties involved in the final disposition of the deceased

Clerical assistance in the completion of various forms and permits associated with a funeral

Also covers overhead, including facility maintenance, equipment and inventory costs, insurance and administration expenses, and governmental compliance

PREPARATION OF THE BODY

Except in certain special cases, embalming is not required by law. Embalming may be necessary, however, if you select certain funeral arrangements, such as a funeral with viewing. If you do not want embalming, you usually have the right to choose an arrangement that does not require you to pay for it, such as direct cremation or immediate burial.

Embalming	\$700.00
Dressing, casketing and/or cosmetizing of deceased	\$175.00
Hygienic Bathing and Disinfecting of deceased if no embalming	\$75.00
Special care for autopsied cases	\$75.00
Refrigeration per day (It is the policy of our firm to require refrigeration of unembalmed remains after 24 hours.)	\$100.00
Restoration when necessary	\$100.00

USE OF FACILITIES AND STAFF

Use of Facilities and Staff Services for <i>Evening Visitation</i> (per day) (Our services include set up of visitation area, placement of encased remains, display of floral arrangements, supervision of and attendance during the visitation.)	\$300.00
Use of Facilities and Staff Services for <i>Daytime Visitation</i> between the hours of 9 a.m. and 5 p.m. (Our services include set up of visitation area, placement of encased remains, display of floral arrangements, supervision of and attendance during the visitation.)	\$150.00/Hour
Use of Facilities and Staff Services for <i>Funeral Service in our Chapel</i> (Our services include coordinating the funeral arrangements, supervision of the funeral, and staff to assist with the funeral ceremony.)	\$900.00
Equipment and Staff Services for <i>Funeral Service at Other Facility</i> (Our services include coordinating the funeral arrangements, supervision of the funeral, and staff to assist with the funeral ceremony.)	\$900.00
Use of Facilities and Staff Services for <i>Memorial Service (without remains present) in our Chapel</i> (Our services include coordinating the memorial service arrangements, supervision of the memorial service and staff to assist with the service.)	\$600.00
Equipment and Staff Services for <i>Memorial Service (without remains present) at Other Facility</i> (Our services include coordinating the memorial service arrangements, supervision of the memorial service, and staff to assist with the service.)	\$600.00
Equipment and Staff Services for <i>Graveside Service</i> (Our services include accompaniment of remains to cemetery, supervision of graveside service, and staff to assist with the service.)	\$500.00

TRANSPORTATION

Transfer of deceased from place of death to funeral home (within a 60 mile radius) Additional distance will be charged at \$2.50 per mile.	\$250.00
Funeral vehicle (e.g. Hearse) (within a 60 mile radius) Additional distance will be charged at \$2.50 per mile.	\$295.00
Funeral vehicle (e.g. Limousine) (within a 60 mile radius) Additional distance will be charged at \$2.50 per mile.	As Quoted
Flower Van / Utility vehicle (within a 60 mile radius) Additional distance will be charged at \$2.50 per mile.	\$180.00

Lead Car (within a 60 mile radius) Additional distance will be charged at \$2.50 per mile.	\$50.00
Transportation to or from Airport	\$395.00
Transfer to or from crematory	\$150.00

FORWARDING REMAINS TO ANOTHER FUNERAL HOME

This charge includes removal of remains, basic service of staff, necessary authorization, embalming, bathing and disinfecting of remains, use or preparation room, service vehicle, transportation to local airport or other place of shipping (excluding shipping charges and shipping containers). This charge does not include visitation or ceremonies. This charge applies to shipping within the continental U.S. only.	\$2695.00
---	-----------

RECEIVING REMAINS FROM ANOTHER FUNERAL HOME

This charge includes basic service of staff, transportation from local airport or other shipping destination, and transportation of remains (Utility Vehicle) to cemetery or crematory. This charge does not include visitation or ceremonies.	\$1655.00
--	-----------

DIRECT CREMATION

If you want to arrange a direct cremation, you can use an alternative container. Alternative containers encase the body and can be made of materials like fiberboard or composition materials (with or without an outside covering). The containers we provide are alternative containers and other cremation containers, which include containers made of wood, containers made of fiberboard, and containers made of other composite materials. See descriptions below. We also offer a selection of caskets designed for cremation.

Range:
\$2705.00 To \$5300.00

Our charges for direct cremation (without ceremony) include removal of remains, transportation to crematory, service vehicle and minimum services of staff. The crematory fee is included.

- | | |
|--|-----------|
| 1. Direct cremation with container provided by the purchaser (All such containers must meet any applicable state or crematory requirements). | \$2705.00 |
| 2. Direct cremation with Pacific Pine - Medium Hardboard, Rosetan Crepe Interior | \$4100.00 |
| 3. Direct cremation with Standard Brown - Medium Density Fiberboard, No Interior | \$3200.00 |

4. Direct cremation with Minimum Alternative Container – Cardboard – No Interior	\$2800.00
5. Direct cremation with casket from our funeral home (in addition to cost of casket)	\$2705.00

IMMEDIATE BURIAL

Our charges for immediate burial (without any rites or ceremonies at the funeral home, graveside or elsewhere) include removal of remains, transportation to cemetery, service vehicle and basic services of staff. Range:
\$2825.00 To \$6920.00

1. Immediate burial with container provided by the purchaser (All such containers must meet any applicable state or cemetery requirements).	\$2825.00
2. Immediate burial with minimum casket. (Apollo Silver - 20 gauge steel – Non- Gasketed)	\$4020.00
3. Immediate burial with casket selected from our facility. (In addition to cost of casket - see Casket Price List for casket prices.	\$2825.00

ALTERNATIVE CONTAINERS

(Refer to the Casket Price List as provided at the funeral home.) *Range: \$95.00 To \$495.00*

CASKETS

(A complete price list will be provided at the funeral home.) Range: \$1195.00 To \$4095.00

CREMATION CONTAINERS

(Refer to the Casket Price List as provided at the funeral home.) Range: \$95.00 To \$1395.00

CREMATION ORIENTED CASKETS

(Refer to the Casket Price List as provided at the funeral home.) Range: \$915.00 To \$1395.00

OUTER BURIAL CONTAINERS

(A complete price list will be provided at the funeral home.) Range: \$995.00 To \$5895.00

URNS

(A complete price list will be provided at the funeral home.) Range: \$40.00 To \$565.00

CLOTHING

Range: \$145.00 To \$195.00

OTHER

Standard Memorial Package: Register Book, 50 Engraved Acknowledgment Cards, 100 Memorial Folders, & 1 Video Tribute	\$150.00
Standard Memorial Folders (per 100)	\$ 75.00
Engraved Acknowledgement Cards (per 25)	\$20.00
Standard Register Book	\$35.00
Additional Video Tributes (per copy)	\$20.00
Bookmarks (each)	\$2.00
Casket Cap Panels	\$195.00
Opening and Closing of Grave (City and County Cemeteries)	\$775.00
Cemetery Services (Vault Installation-2 Tents-24 Chairs)	\$450.00
Open & Close Cremation Grave Only	\$150.00
Open & Close Cremation Grave with Tent, Chairs & Setup	\$500.00
Remove and Reset Slab	\$350.00
Remove and Reset Concrete	\$350.00
Cut Death Date on Headstone	\$175.00
Airtray	\$285.00
Combination Shipping Unit	\$285.00
Cremation Fee	\$465.00
Additional Keepsake Medallions (each)	\$50.00
Additional Life Symbol Corners (each)	\$50.00

PACKAGE OPTIONS

Although services may be selected from the itemized portion of the General Price List, the following list of commonly selected package services may help you select the appropriate arrangement.

NOTE: The following packages include only the items listed in the package. The merchandise you select and the cash advance items are additional.

BURIAL OPTIONS

TRADITIONAL CHAPEL OR CHURCH SERVICE **\$5695.00**
WITH EVENING VISITATION

Includes:

- Basic professional services of Funeral Director and staff
- Embalming
- Dressing, Casketing and Cosmetology
- Use of Facility for Evening Visitation and Service of the Funeral Director and Staff in Supervising Visitation (includes one visitation period)
- Use of Facility for Funeral Service and Service of Funeral Director and Staff for Supervision in a Facility other than Funeral Home
- Removal of the Deceased from the Place of Death to the Funeral Home within a 60 mile radius.
- Automotive Equipment: Lead Vehicle, Funeral Coach & Flower Van/Utility Vehicle

This service does not include:

- Cash Advance Items
- Casket
- Outer Burial Container (Vault)
- Cemetery Services (vault installation, tents, chairs)
- Opening and Closing of Grave
- Memorial Register, Memorial Folders and Acknowledgement Cards
- 8% Sales Tax on Merchandise

***TRADITIONAL CHAPEL OR CHURCH SERVICE
WITH SAME DAY VISITATION***

\$5395.00

Includes:

- Basic professional services of Funeral Director and staff
- Embalming
- Dressing, Casketing and Cosmetology
- Use of Facility for Visitation Prior to Service and Service of the Funeral Director and Staff in Supervising Visitation (includes one visitation period)
- Use of Facility for Funeral Service and Service of Funeral Director and Staff for Supervision in a Facility other than Funeral Home
- Removal of the Deceased from the Place of Death to the Funeral Home within a 60 mile radius.
- Automotive Equipment: Lead Vehicle, Funeral Coach & Flower Van/Utility Vehicle

This service does not include:

- Cash Advance Items
- Casket
- Outer Burial Container (Vault)
- Cemetery Services (vault installation, tents, chairs)
- Opening and Closing of Grave
- Memorial Register, Memorial Folders and Acknowledgement Cards
- 8% Sales Tax on Merchandise

***GRAVESIDE SERVICE WITH EVENING
VISITATION***

\$5295.00

Includes:

- Basic professional services of Funeral Director and staff
- Embalming
- Dressing, Casketing and Cosmetology
- Use of Facility for Visitation and Service of the Funeral Director and staff in Supervising Visitation (includes one visitation period)
- Equipment and Service of Funeral Director and Staff for Supervising and Directing Graveside Service
- Removal of the Deceased from the Place of Death to the Funeral Home within a 60 mile radius.
- Automotive Equipment: Lead Vehicle, Funeral Coach & Flower Van/Utility Vehicle

This service does not include:

- Cash Advance Items
- Casket
- Outer Burial Container (Vault)
- Cemetery Services (vault installation, tents, chairs)
- Opening and Closing of Grave
- Memorial Register, Memorial Folders and Acknowledgement Cards
- 8% Sales Tax on Merchandise

GRAVESIDE SERVICE WITH NO VISITATION

\$4995.00

Includes:

- Basic professional services of Funeral Director and staff
- Embalming
- Dressing, casketing and cosmetology
- Funeral Service and Service of Funeral Director and Staff for Supervision of a Graveside Service
- Removal of the Deceased from the Place of Death to the Funeral Home within a 60 mile radius.
- Automotive Equipment: Lead Vehicle, Funeral Coach & Flower Van/Utility Vehicle

This service does not include:

- Cash Advance Items
- Casket
- Outer Burial Container (Vault)
- Cemetery Services (vault installation, tents, chairs)
- Opening and Closing of Grave
- Memorial Register, Memorial Folders and Acknowledgement Cards
- 8% Sales Tax on Merchandise

CREMATION OPTIONS

TRADITIONAL CREMATION SERVICE

\$5785.00

Includes:

- Basic Professional Services of Funeral Director and Staff
- Embalming
- Dressing, Casketing and Cosmetology
- Use of Facility for Visitation and Service of the Funeral Director and Staff in Supervising Visitation (includes one visitation period)
- Use of Facility for Funeral Service and Service of Funeral Director and Staff for Supervision in a Facility other than Funeral Home
- Removal of the Deceased from the Place of Death to the Funeral Home within a 60 mile radius.
- Transportation to Crematory
- Crematory Fee

This service does not include:

- Cash Advance Items
- Cremation Casket or Rental Casket
- Urn
- Memorial Register, Memorial Folders and Acknowledgement Cards
- 8% Sales Tax on Merchandise

*****Add \$295.00 for Hearse, if funeral services are held at a church or other facility.**

SIMPLE MEMORIAL SERVICE

\$3265.00

Includes:

- Basic Professional Services of Funeral Director and staff
- Use of Facility for Funeral Service and Service of Funeral Director and Staff for Supervision in a Facility other than Funeral Home
- Removal of the Deceased from the Place of Death to the Funeral Home within a 60 mile radius.
- Transportation to Crematory
- Crematory Fee

This service does not include:

- Cash Advance Items
- Cremation Casket or Alternative Container
- Urn
- Memorial Register, Memorial Folders and Acknowledgement Cards
- 8% Sales Tax on Merchandise

PROFESSIONAL SERVICE CHARGE FOR INFANT/CHILD AS ITEMIZED ON THE ADULT GENERAL PRICE LIST

Fetal Demise	15% of Adult Price
2' 0"	25% of Adult Price
2' 6"	35% of Adult Price
3' 0"	40% of Adult Price
3' 6"	55% of Adult Price
4' 0"	65% of Adult Price
4' 6"	75% of Adult Price
5' 0"	85% of Adult Price

CASH ADVANCE ITEMS

Sales Tax
Clergy Honorarium
Musicians/Vocalist Honorarium
Obituary Notices
Death Certificates
Motorcycle Escorts
Common Carrier Charges
Medical Examiners Fees
State or Local Permit Fees

NOTE: These are just a few examples of Cash Advance Items. There are many more that could apply, depending on the service you select.

Payment Policy

Watson-Mathews Funeral Home has established a uniform payment policy to serve families fairly and to prevent misunderstandings. This payment policy enables us to contain our costs to all families we serve. If a verifiable and assignable insurance policy is not available, then the total cost for the funeral is required before services. **Arrangements payable by an estate will not be accepted.** The following methods of payment are available:

1. Pre-arranged Funeral Plan (unpaid balance due at time of arrangements).
2. Cash/Check (If paid in full at time of arrangements, we offer a 4% discount, on Service and Merchandise)
3. Verifiable and Assignable Insurance Policy -
(Assignment funding thru Express Funeral Funding)
4. Major Credit Cards (Visa, Mastercard, Discover & American Express).
5. Financing available through First Franklin Financial in Montezuma.

Monthly payments are not accepted

Office Hours

9 AM – 5 PM (Monday – Friday)
Saturday & Sunday by Appointment
We may be reached by phone anytime.

MERCHANDISE

Descriptions and Itemized Price List



Watson-Mathews Funeral Home

322 N. Dooly Street, P.O. Box 283

Montezuma, Georgia 31063

Telephone: 478-472-8191

Fax: 478-472-2190

License Number: 374

Casket Prices effective as of September 20, 2018

Outer Burial Prices effective as of January 2, 2018

Casket Price List

Metal Caskets

O61 Cashmere	18 Gauge Gasketed with Champagne Sierra with Dual Overlay Interior	Batesville	\$4095.00
M39 Revere Silver	20 Gauge with Ivory Linwood-Charpente Interior	Batesville	\$2895.00
OQ9 Opal-28	20 Gauge Steel with Ivory Crepe Interior	Batesville	\$2795.00
SO1 Ocean Blue	20 Gauge Gasketed with Ivory Crepe Interior	Batesville	\$2795.00
Q83 Primrose	20 Gauge Steel with Moss Pink Crepe Interior	Batesville	\$2695.00
Q01 Heirloom Pewter	20 Gauge Steel with Rosetan Crepe Interior	Batesville	\$2495.00
Hercules 28	20 Gauge Steel with Crepe Interior- Gasketed (Exterior colors may vary upon availability)	Batesville	\$2295.00
QM2 Aries	20 Gauge Steel with Crepe Interior (Exterior colors may vary upon availability)	Batesville	\$2095.00
QD3 Gemini	20 Gauge Steel with Crepe Interior (Exterior colors may vary upon availability)	Batesville	\$1595.00
Triton Grey	20 Gauge Non-Gasketed with Ivory Crepe Interior	Batesville	\$1495.00
Apollo	20 Gauge, Non-Gasketed with Crepe Interior. (Exterior colors varies upon availability)	Batesville	\$1195.00

Wood Caskets

8Q3 Clifton	Solid Poplar with Rosetan Crepe Interior	Batesville	\$2595.00
Lynx	Select Hardwood with Rosetan Crepe Interior	Batesville	\$1595.00

Rental Casket

Gemini Rental Casket	20 Gauge Non-Gasketed with Crepe Interior	Batesville	\$915.00
----------------------	---	------------	----------

Outer Burial Container Price List

Cremation Outer Burial Containers

Crowne Urn Vault	White Plastic Urn Vault	Crescent	\$325.00
Ultimate Urn Vault	White Plastic Urn Vault	Crescent	\$275.00
Pebblecove Urn Vault	Urn Vault	Batesville	\$230.00

Concrete Outer Burial Containers

Bronze Triune	Bronze Inner Liner	Wilbert	\$5895.00
Copper Triune	Copper Inner Liner	Wilbert	\$5395.00
Stainless Steel Triune	Stainless Steel Inner Liner	Wilbert	\$3895.00
Venetian	ABS-Marbelon Inner Liner	Wilbert	\$2295.00
Continental	Strentex Inner Liner	Wilbert	\$1995.00
Monticello	Strentex Inner Liner	Wilbert	\$1395.00
Monarch	Regular Concrete - No Liner	Wilbert	\$995.00

Metal Outer Burial Containers

12 Gauge Basic Steel	12 Gauge Basic Steel (Silver Finish)	Doric	\$1195.00
----------------------	--------------------------------------	-------	-----------

In most areas of the country, state or local law does not require that you buy a container to surround the casket in the grave. However, many cemeteries require that you have such a container so that the grave will not sink in. Either a grave liner or a burial vault will satisfy these requirements. The terms 'protective' and 'non-protective', which may be found in some printed material provided by the manufacturer, were chosen by the manufacturer and do not constitute or imply a representation or warranty by the funeral home. Although certain caskets offered for sale by this funeral establishment may be of better quality construction and comprised of more durable material than others, neither this funeral establishment nor any of its employees represents or implies that any casket will be airtight or watertight or will provide long-term preservation of human remains.

Urns and Vases Price List

Cremation Jewelry Urns

Sterling Silver Cross-Plain	Sterling Silver Cross - Large	Crescent	\$300.00
14K Gold Teardrop - Keepsake Pendant	14K Gold Teardrop	Infinity	\$300.00
Gold Vermeil Dove - Keepsake Pendant	Gold Vermeil Dove	Crescent	\$195.00
Silver Chromate - Glass Cylinder Filigree Casing	Silver Chromate - Glass Cylinder Filigree Casing	Crescent	\$195.00
Sterling Silver Filigree Cross	Sterling Silver Filigree Cross	Crescent	\$195.00
Rhodium Plated Brass (Silver) Cross	Rhodium Plated Brass (Silver) Cross	Crescent	\$75.00
Rhodium Plated Brass Heart - Keepsake Pendant	Rhodium Plated Brass - Gold Heart	Crescent	\$75.00
Rhodium Plated Brass (Silver) Heart - Keepsake Pen	Rhodium Plated Brass (Silver) Cross	Crescent	\$41.50
Gold Filled Chain	Gold Filled Chain	Crescent	\$40.00
Sterling Silver Chain	Sterling Silver	Crescent	\$40.00

Hardwood Urns

Pathway Home	Solid Oak with Satin Finish	Infinity	\$495.00
Walnut Memento Chest	Solid Walnut Hardwood - Memento Chest	Batesville	\$495.00
Evening Reflections	Solid Oak with Satin Finish	Infinity	\$450.00
Hamilton	Solid Oak with Satin Finish	Infinity	\$355.00
Honey Brown	Wood Urn	Batesville	\$275.00

Keep Sake Urns

Magnolia Pink Cloisonne - Keepsake	Handcrafted from copper with 24K gold plating	Batesville	\$195.00
Cultured Stone Keepsake - Blank	Cultured Stone (30-R-3014)	Crescent	\$100.00
Vista Camouflage Keepsake	Cultured Marble Urn	Mark Thomas	\$95.00
Crescent Marble Green - Keepsake	Cultured Marble Urn	Crescent	\$85.00

Crescent Marble White - Keepsake	Cultured Marble Urn	Crescent	\$85.00
Pewter Heart - Keepsake	Brass Keepsake Heart	Crescent	\$85.00
Going Home Heart - Keepsake	Brass Urn	Crescent	\$85.00
Going Home - Keepsake	Brass Urn	Crescent	\$55.00
Pewter Grecian - Keepsake	Brass Urn	Crescent	\$55.00
Imperial Black - Keepsake	Black Cultured Marble Keepsake Urn	Crescent	\$55.00
Camouflage Keepsake Urn	Aluminum Urn with Camouflage Finish	Crescent	\$50.00

Marble Urns

Forever In Our Hearts	Cultured Stone	Crescent	\$465.00
Vista Camouflage Fullsize	Cultured Marble Urn	Mark Thomas	\$295.00
Crescent Marble White	Cultured Marble Urn	Crescent	\$295.00
Crescent Marble Green	Cultured Marble Urn	Crescent	\$295.00
Imperial Black - Fullsize Urn	Black Cultured Marble Urn	Crescent	\$285.00

Metal Urns

Magnolia Pink Cloisonne - Fullsize Urn	Handcrafted from copper with 24K gold plating	Batesville	\$565.00
Camouflage Fullsize Urn	Aluminum Urn with Camouflage Finish	Crescent	\$295.00
Pewter Grecian - Full Size Urn	Brass Urn	Crescent	\$235.00
Going Home - Full Size Urn	Brass Urn	Crescent	\$225.00

Sheet Bronze Urns

Regal	Painted Pearl White - Bronze Chest Urn	Batesville	\$495.00
Sheet Bronze	Polished Bronze Urn	Crescent	\$95.00

Urns - Other

Dove Scattering Tube	Dove Scattering Tube	Infinity	\$115.00
----------------------	----------------------	----------	----------

Blooming Bio-Urn	Biodegradable Urn	Crescent	\$75.00
Temporary Basic Urn	Plastic Urn	Crematory	\$40.00

Other Merchandise Price List Price List

Cremation Oriented Caskets

Pacific Pine	Cremation Casket with Crepe Interior	Batesville	\$1395.00
Brockton Oak Rental	Solid Oak with Rosetan Crepe Interior	Batesville	\$915.00

Flag Cases

Oak Flag Case	Solid Oak Flag Case	Kelco	\$125.00
Cherry Flag Case	Cherry Flag Case	Crescent Memorial	\$50.00

Alternative Containers

Standard Brown	Wood Composite Material with Crepe Interior	Batesville	\$495.00
Basic Cremation Container	Basic Cardboard Cremation Container	Crematory	\$95.00

Urns - Other

Rhodium Plated Brass (Silver) Heart	Rhodium Plated Brass (Silver) Heart	Crescent	\$20.00
-------------------------------------	-------------------------------------	----------	---------