

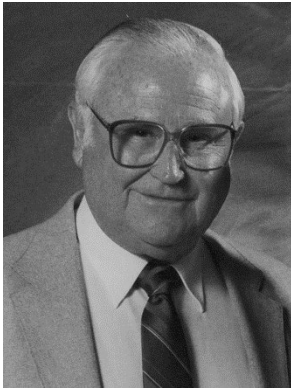


RODENBERGER-GRAY

-FUNERAL HOME-

Family Planning Guide

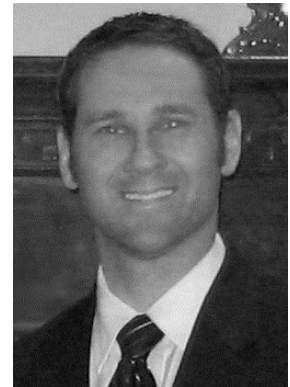
3 Generations serving you since 1948.....



C.C. "Bud" Rodenberger



Jerrie Rodenberger Gray



Brooke Gray

We sincerely appreciate the opportunity you have given us to help you at this most difficult time. In the next following pages you will find a list of topics that will help guide you in the funeral planning process, as well as our general price list. We have included some suggestions to help you in creating a ceremony that will honor your loved one and start the process of nurturing and healing.

Please consider the following when studying this guide.

**Our staff at Rodenberger-Gray understands that funeral is a lifetime in a day, not just a day in a lifetime. We are dedicated and focused to help you create your once in a lifetime tribute with the premier facilities and experts that are trained in ceremony and event planning.*

**Rodenberger-Gray remains owned and operated by the third generation of the Rodenberger Family – who pride themselves on guaranteeing your complete satisfaction with our recommended services. Simply stated, should we not meet your expectations in the course of serving your family, you will not be charged for that with which you were dissatisfied.*

These foundations of service to Henry County have earned us national recognition and the goodwill of many generations of families in our community.

Thank you again for the opportunity.

Yours in Service,

Brooke A. Gray

Funeral Home Price Comparison Considerations

1. Is the funeral provider's pricing easily accessible and understandable?
2. Does the staff listen and comprehend my needs, responding with warmth and **eagerness to assist**?
3. Does the firm's personnel have the knowledge and experience of various faith based and cultural traditions and able to facilitate well organized ceremonies?
4. Are the facilities, equipment, and technology up to date?
5. Will the firm go out of its way to accommodate special requests and demonstrate creativity in tailoring services, or is it a "one size fits all" approach?
6. Will adequate personnel be assigned to supervise the events and services you select?
7. Does the funeral home outsource key services, such as embalming and the transfer of your loved one to the funeral home? Does the removal staff live local and be able to respond in a timely fashion?
8. Can you have a consultation or meeting at the funeral home without feeling pressured or obligated to select certain merchandise or services?
9. Will the funeral home handle all the calls and arrangements for obituaries, flowers, organization of a church or event funeral, luncheon or meal, and handle all fee payments for these services?
10. Does the funeral home walk with you till the end, making sure every detail is complete: such as veteran services, monument or marker, insurance processing, or do they leave you to figure out those details on your own?



A tribute they'll never forget

Whether you are a spouse of 60 years or a child who has lost a parent.... Rodenberger-Gray is here for you. Knowing that life is important and each life is different, we will listen and help create a the perfect service from simple to ornate.

If your grandmother loved to quilt, imagine how special it could be to have her quilts displayed on quilt racks or if your father loved to fish, how special it would be to give out a fishing lure to each visitor as a keepsake. We want to help you honor that life. It could be setting up a table of memorabilia or creating a photo DVD with some of their favorite music. We are here to help.

Other options could include a Harley Davidson or horse drawn hearse, Dove or Balloon release, a live bagpiper, bugler, pianist, harpist, or guitarist. There are many options that we have to help you create that once in a lifetime event you will never forget.

There's more than one way to remember

Thumbies

Rodenberger-Gray has the technology to take your loved one's finger print and engrave it on silver and gold keepsake jewelry. A spouse of a who lost his wife to breast cancer gave thumbies to all the members of a survivor support group. Thumbies are a beautiful way to keep the memories of your loved one alive and close to your heart.



Handmade Flower Jewelry

Rodenberger-Gray can create beautiful beaded jewelry made out of the floral arrangements from your loved one's flowers.

Let us transform the flowers into a lifelong keepsake instead of watching the flowers wither away. We can create Rosaries, Bracelets, Pendants, Tie Tacks, and Sun Catchers. (items can vary). Please ask your funeral director more about this lasting tribute.



Monuments and Markers

At Rodenberger-Gray, we want the arrangement process to be as seamless as possible. As part of our services we offer monuments and personal memorialization for your convenience. We have served well over a third of our families in creating memories in granite. Let us help you. Please inquire to see many of our designs.



General Price List

These prices are effective as of March 1, 2022. They are subject to change without notice. The goods and services shown below are those we can provide for our customers. You may choose only the items you desire. However, any funeral arrangements you select will include a charge for our basic services and overhead. If legal or other requirements mean you must purchase any items you did not specifically ask for, we will explain the reason in writing on the statement we provide describing the funeral goods and services you selected.

BASIC SERVICES OF FUNERAL DIRECTOR & STAFF	\$2350
Our charge includes funeral counseling, necessary arrangements, recording vital statistics, securing permits, filing & obtaining death certificates and other forms and claims, preparation of necessary notices, and coordination of service plans with parties involved in the final disposition of the deceased. This fee for our basic services and overhead will be added to the total cost of the funeral arrangements you select. (This fee is already included in our charges for direct cremations, immediate burials and forwarding and receiving remains.)	
EMBALMING	\$795
Except in certain special cases, embalming is not required by law. Embalming may be necessary, however, if you select certain funeral arrangements, such as a funeral with viewing. If you do not want embalming, you usually have the right to choose an arrangement that does not require you to pay for it, such as a direct cremation or immediate burial.	
OTHER PREPARATION OF THE BODY	\$350
Includes dressing, application of cosmetics and casketing.	
OTHER PREPARATION IN LIEU OF EMBALMING	\$195
SPECIAL CARE OF AUTOPSIED REMAINS	\$295
EXTENDED SHELTERING/REFRIGERATION OF REMAINS (per day after 3 days)	\$100
EXPEDIATED/WEEKEND DEATH CERTIFICATE FEE (Less than 48 hours after signing)	\$250
WAITING FOR LUNCHEON BETWEEN EVENTS	\$150
SERVICES REQUESTED MORE THAN 4 DAYS AFTER DEATH OR HOLIDAY	\$425

Use of Facility, Staff and Equipment:

FUNERAL CEREMONY (conducted at the funeral home or other location)	\$695
VISITATION OR VIEWING (conducted at the funeral home or other location)	\$695
MEMORIAL SERVICE (conducted at the funeral home or other location)	\$695
HOURS OF VISITATION RIGHT BEFORE THE FUNERAL (conducted at the funeral home) PER HOUR	\$225
EVENING SERVICE (After 5pm Additional)	\$150
GRAVESIDE SERVICE	\$425

Automotive Equipment:

TRANSFER OF DECEASED TO THE FUNERAL HOME (within 30 mile radius)	\$450
HEARSE (within 30 mile radius)	\$395
LIMOUSINE (up to 3 hours, additional @ \$50/hour)	\$475
LEAD/ SERVICE VEHICLE (within 30 mile radius)	\$195
TRANSPORTATION BEYOND A 30 MILE RADIUS (per mile)	\$3

Merchandise:

CASKETS (range of prices, a complete price list will be provided at the funeral home)	\$885-\$16,000
OUTER BURIAL CONTAINERS (range, a complete price list will be provided at the funeral home)	\$1,325-\$8,995
URNS, KEEPSAKE URNS, MINIATURE URNS, DOUBLE URNS & URN VAULTS (range of prices)	\$49-\$3,500
ALTERNATIVE (CREMATION) CONTAINERS (range of prices, a complete list will be provided)	\$100-\$580
CUSTOM CAP PANELS	\$225
MEMORIAL PACKAGES	\$350-\$450
REGISTER BOOKS	\$95-\$295
MEMORIAL FOLDERS (per 50)	\$75
PRAYER CARDS (per 50)	\$75
ACKNOWLEDGMENT CARDS (per 50)	\$75
VIDEO RECORDING OF SERVICE	\$100

Merchandise Continued

TRIBUTE VIDEO DVD	\$100
TRIBUTE VIDEO DVD (duplicate)	\$15
DOVE RELEASE	\$80
DOVE RELEASE (Additional doves)	\$20
LAMINATED OBITUARY BOOKMARKS (Set of 4)	\$20
FLIGHT CONTAINER FOR CASKETED BODY	\$375
FLIGHT CONTAINER FOR UNCASKETED BODY	\$395
MEMORIAL KEEPSAKES (Jewelry, Thumbprint, Flower, Etc.)	MARKET PRICE
FINAL LETTERING	\$200 - \$400
VETERAN PLAQUE INSTALLATION	\$150
CREMATION FEE	\$495

Additional Services:

FORWARDING REMAINS TO ANOTHER FUNERAL HOME	\$2950
--	--------

This charge includes basic services of funeral director & staff, necessary authorizations, embalming & transportation to Detroit Metropolitan Airport. It does not include visitation or funeral or flight costs.

RECEIVING REMAINS FROM ANOTHER FUNERAL HOME	\$2595
---	--------

This charge includes basic services of funeral director & staff, transportation to the funeral home from Detroit Metro Airport, hearse transportation to local cemetery. It does not include visitation or funeral.

DIRECT CREMATION	\$1450 - \$2395
------------------	-----------------

Our charge for direct cremation (excluding ceremony, visitation & crematory charges) includes local removal, care of remains, transportation to crematory, basic services of funeral director & staff and authorizations. If you want to arrange a direct cremation, you can use an alternative container. Alternative containers encase the body & can be made of materials like fiberboard, cardboard or composition materials (with or without an outside covering).

DIRECT CREMATION WITH CLOTH COVERED SOFTWOOD CASKET	\$2395
---	--------

DIRECT CREMATION WITH CARDBOARD ALTERNATIVE CONTAINER	\$1550
---	--------

DIRECT CREMATION WITH CONTAINER PROVIDED BY CLIENT	\$1450
--	--------

IMMEDIATE BURIAL	\$2495 - \$3375
------------------	-----------------

Our charge for immediate burial (excluding ceremony, visitation, and cemetery charges) includes local removal, care of remains, basic services of staff, authorizations and hearse transportation to local cemetery.

IMMEDIATE BURIAL WITH CLOTH COVERED SOFTWOOD CASKET	\$3375
---	--------

IMMEDIATE BURIAL WITH CONTAINER PROVIDED BY THE CLIENT	\$2495
--	--------

IMMEDIATE BURIAL WITH CASKET AS SELECTED (plus cost of casket)	\$2495
--	--------

ANATOMICAL BODY DONATION	\$1050
--------------------------	--------

Basic Services, transfer of remains to UTMIC for anatomical research. Obituary preparation, death certificate assistance

DISINTERMENT (Does not include cemetery or vault fees)	\$395
--	-------

CHILDREN'S SERVICES

Because we care..... Professional services and staff for infants under one year of age are provided to the family at

No additional charge. This includes transfer of the remains, facilitate graveside service in local cemetery. Merchandise is not included. Infant cremation fee is \$395.00. Services for children 1-10 are provided at a discounted rate depending on the age of the child.

Service Packages Listed on Following Page

Burial Packages:

TRADITIONAL FUNERAL **\$5995**
Basic services of funeral director and staff, transfer of remains (30-mile radius) embalming, basic preparation of the deceased, 6 hour public visitation and funeral and committal service held on the following day, obituary preparation, Filing documents and permits. Does not include cash advance items. (Fees may vary depending on location of anatomical location).

SAME DAY FUNERAL **\$5250**
Basic services of funeral director and staff, transfer of remains (30-mile radius) embalming, basic preparation of the deceased, 6 hour public visitation and funeral and committal service all held on the same, obituary preparation, Filing documents and permits. Does not include cash advance items. (Fees may vary depending on location of anatomical location).

Cremation Packages:

COMMUNITY GATHERING **\$5695**
Basic services of funeral director and staff, transfer of remains (30-mile radius) embalming, basic preparation of the deceased, 6 hour public visitation and funeral service held on the following day, obituary preparation, refrigeration. (Alternative container included). Filing documents and permits. Does not include cash advance items. (Fees may vary depending on location of anatomical location).

FRIENDS & FAMILY GATHERING **\$4650**
Basic services of funeral director and staff, transfer of remains (30-mile radius), embalming, basic preparation of the deceased, 2 hour public visitation and funeral service held on the same day, obituary preparation, refrigeration. (Alternative container included). Filing documents and permits. Does not include cash advance items. (Fees may vary depending on location of anatomical location).

COMMUNITY GOODBYE **\$3585**
Basic services of funeral director and staff, transfer of remains (30-mile radius), basic preparation of the deceased, 6 hour public visitation and funeral service held on the following day, obituary preparation, refrigeration. (Alternative container included). Filing documents and permits. Does not include cash advance items. (Fees may vary depending on location of anatomical location).

FRIENDS & FAMILY GOODBYE **\$2890**
Basic services of funeral director and staff, transfer of remains (30-mile radius), basic preparation of the deceased, 2 hour public visitation and funeral service held the same day, obituary preparation, refrigeration. (Alternative container included). Filing documents and permits. Does not include cash advance items. (Fees may vary depending on location of anatomical location).

PRIVATE INFORMAL GOODBYE **\$2195**
Basic services of funeral director and staff, transfer of remains (30-mile radius), basic preparation of the deceased, 1hour family private viewing and identification, obituary preparation, refrigeration. (Alternative container included). Filing documents and permits. Does not include cash advance items. (Fees may vary depending on location of anatomical location).

SCATTERING FAREWELL **\$2195**
Basic services of funeral director and staff, transfer of remains (30-mile radius), basic preparation of the deceased, 1hour family private viewing and identification, obituary preparation, refrigeration. (Alternative container included). Filing documents and permits. Does not include cash advance items. (Fees may vary depending on location of anatomical location).

PAYMENT POLICY

To lose someone you love is a devastating experience. The trauma can influence the decisions made. It is important to be realistic about the expenditures. The decisions made should reflect the life of the deceased and the family but stay within your budget. We have options for every budget. Regardless of expenditure, we will work with you to create a funeral experience that will be meaningful, personal, and helpful in beginning the grieving process. Thank you for the honor and privilege of serving you and your family at this difficult and important time.

In order to provide the best service possible to you & your family, payment is due at the time of arrangements. If an estate will ultimately take care of funeral expenses, you must select a method of payment below and seek reimbursement.

For your convenience, we accept the following methods of payment:

- cash check insurance assignment credit card (VISA, MasterCard, Discover)