



Faithfully serving our community since 1963



## *General Price List*

These prices are effective as of  
February 12th, 2024 and are subject to change.

**Primary Business Address**  
4266 Mt. Abernathy Avenue  
San Diego, CA 92117  
FD#1126

**Phone:** 858-279-2211  
**Fax:** 858-279-2244  
**[www.clairemontmortuary.com](http://www.clairemontmortuary.com)**



1963



2022





## *Our Legacy*

*Clairemont Mortuary has been part of the San Diego community since we opened our doors in 1963 to serve the growing communities in North San Diego.*

*As a bilingual mortuary with capabilities in both English and Spanish, we've been able to better serve our community and the families who choose us to care for their loved ones. Our close affiliation with Greenwood Memorial Park and Mortuary gives us a full range of experience and industry knowledge to fully care for all families from every walk of life.*

*Our services are designed to help families find comfort during one of the most personal and challenging stages of their lives. We understand that losing a loved one is an emotional and difficult experience, and we are committed to helping our families with compassionate, professional and personal service.*

*People come to us during their most difficult times, and we respond with kindness, understanding and expertise. Our goal is to make everyone feel at home as we work with them to create a memorable service in honor of a beautiful life.*





## Policies

### Entitlement

Prior to drafting any contract for goods or services, the responsible party or the decedent's survivor who is handling the funeral arrangements is entitled to receive a copy of any preneed agreement in the possession of the funeral establishment that has been signed and paid for, in full or in part, by or on behalf of the decedent.



### Our Payment Policy

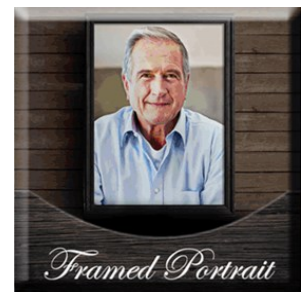
To lose someone you love is a devastating human experience. It is frequently traumatic and can seriously impact judgement. We believe in the importance of the recognition and meaningful celebration of a life that has been lived and will assist in arranging an appropriate service to meet your individual needs. It is also important to be realistic in respect to funeral expenditures. We do not want a family to spend more than they should nor less than they would like. What is important is that the arrangements be in keeping with the family's wishes and budget. Provisions for payment are due at the time of arrangements. To avoid any possibility of misunderstanding or embarrassment and for your convenience we accept the following methods of payment: check, credit card, debit card, insurance assignment of verifiable life insurance, payment by forwarding or receiving funeral home or pre-paid funeral plan. Please feel free to consult with your funeral arranger with any questions or concerns.

# Every Life Tells A Story



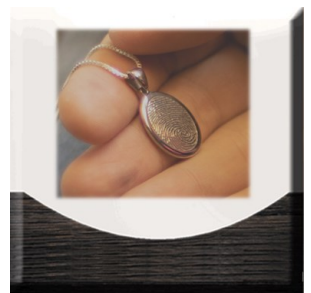
## Complete Funeral Packages

To help make funeral planning easier for you, Clairemont Mortuary offers several burial and cremation packages. These packages provide you with a wide range of selections, options and prices. Most importantly, they allow you to devote more time to personalizing the service as you celebrate the life of the person you are honoring. Each package is designed to provide a complete funeral ceremony, including both the professional services and necessary merchandise. Detailed descriptions of the various packages are included in this brochure. If you do not want to choose one of these complete funeral packages, you may choose individual items listed in our Price List.



## Pre-Planning Assistance

We provide free assistance with pre-planning your services. You have the option of locking in today's prices by funding your funeral plan this relieving your loved ones from these difficult decisions at the time of need. Another option is to simply place your wishes on file with us and allow the costs to be paid at the time of need.



## **Elite** Burial Package

<b>Services:</b> Basic Services of Funeral Director and staff	\$2,820.00
Embalming	\$995.00
Dressing and Casketing	\$380.00
Visitation	\$390.00
Chapel, church or graveside service	\$735.00
Transfer to our facility from place of death	\$795.00
Funeral vehicle/Hearse	\$400.00
Service Car	\$200.00
<b>Total Services</b>	<b>\$6,715.00</b>

<b>Merchandise:</b> Casket allowance for the following:	\$9,940.00
Pearson Cherry Casket 7V3 828 HD (202512)	
Tapestry Rose 32oz Y46 844 DHN (147951)	
Aegean Bronze 32oz 039 884 IDH (147862)	
Four (4) Individual Signature Services	\$1,200.00
Elite Memorial Package Includes Guest Book, Style choice of 200 service folders, 2 Candles, 10 Bookmarks, 2 Memorial Prints & 50 Acknowledgement Cards	\$595.00
Floral Allowance	\$895.00
<b>Total Package Price</b>	<b>\$19,345.00</b>
Service Savings	<b>(\$1,800.00)</b>
<b>Package price with savings*</b>	<b>\$17,545.00</b>
Safely Home (Travel Protection)	\$495.00
Package price with Safely Home	\$18,040.00

<b>Casket upgrade options:</b> Primrose 32oz Bronze 265 8JC DN (280184)	\$13,860.00
---	-------------

\*Does not include sales tax

Flowers may be upgraded within the package offering



## **Custom** Burial Package

<b>Services:</b> Basic Services of Funeral Director and staff	\$2,820.00
Embalming	\$995.00
Dressing and Casketing	\$380.00
Visitation	\$390.00
Chapel, church or graveside service	\$735.00
Transfer to our facility from place of death	\$795.00
Funeral vehicle/Hearse	\$400.00
Service Car	\$200.00
<b>Total Services</b>	<b>\$6,715.00</b>

<b>Merchandise:</b> Casket allowance for the following:	\$6,930.00
Autumn Oak-Leaf (5AR 825 HD (146884)	
Blue Mist U04 872 DH (147903)	
Silver Sapphire UG1 828 CDH (185491)	
Three (3) Signature Services	\$900.00
Premier Memorial Package - Guest Book, Style choice of 100 service folders, 2 Candle, 2 Memorial Print & 50 Acknowledgement cards	\$545.00
Floral Allowance	\$795.00
<b>Total Package Price</b>	<b>\$15,885.00</b>
Service Savings	<b>(\$1,780.00)</b>
<b>Package price with savings*</b>	<b>\$14,105.00</b>
Safely Home (Travel Protection)	\$495.00
Package price with Safely Home	\$14,600.00

<b>Casket upgrade</b> Mediterranean Copper Y35 825 (147930)	\$9,240.00
<b>options:</b> Aegean Copper 32oz Y39 884 IDH (147935)	\$9,240.00

\*Does not include sales tax

Flowers may be upgraded within the package offering



# Premium Burial Package

<b>Services:</b>	Basic Services of Funeral Director and staff	\$2,820.00
	Embalming	\$995.00
	Dressing and Casketing	\$380.00
	Visitation	\$390.00
	Chapel, church or graveside service	\$735.00
	Transfer to our facility from place of death	\$795.00
	Funeral vehicle/Hearse	\$400.00
	Service Car	\$200.00
	Total Services	<b>\$6,715.00</b>

<b>Merchandise:</b>	Casket allowance for the following:	\$4,040.00
	Gurnet-Select Hardwood 4Bh 891 D (146825)	
	Clifton –Select Hardwood 41X 8Q3 UHD (263630)	
	Montgomery Select Hardwood 4V4 825 HD (249223)	
	Virgo White/Copper 18g N19 8K9 DH (279134)	
	Virgo Blue 18g N19 8K9 DH (279127)	
	Merlot 18g N01 8K3 CDH (239723)	
	Three (3) Signature Services	\$900.00
	Premier Memorial Package - Guest Book, Style choice of 100 service folders, 2 Candle, 2 Memorial Print & 50 Acknowledgement cards	\$545.00
	Floral Allowance	\$595.00
	Total Package Price	\$12,795.00
	Service Savings	(\$1,680.00)
	<b>Package price with savings*</b>	<b>\$11,115.00</b>
	Safely Home (Travel Protection)	\$495.00
	Package price with Safely Home	\$11,610.00

<b>Casket upgrade</b>	Platinum 18g oT9 8L7 DH (211993)	\$5,770.00
<b>options:</b>	Finch 18g OC1 8K3 UH (280218)	\$5,770.00

\*Does not include sales tax

Flowers may be upgraded within the package offering



# **Standard** Burial Package

<b>Services:</b>	Basic Services of Funeral Director and staff	\$2,820.00
	Embalming	\$995.00
	Dressing and Casketing	\$380.00
	Visitation	\$390.00
	Chapel, church or graveside service	\$735.00
	Transfer to our facility from place of death	\$795.00
	Funeral vehicle/Hearse	\$400.00
	Service Car	\$200.00
	<b>Total Services</b>	<b>\$6,715.00</b>

<b>Merchandise:</b>	Casket allowance for the following:	\$2,880.00
	Libra Light Brown 427 880 D Select Hardwood (248177)	
	Libra Harvest Brown 427 880 D (241727)	
	Antique Gold 20g Q88 832 A (148048)	
	Pisces White 20g QD2 8F3 A (257953)	
	Roman 20g Q88 832 A (148031)	
	Two(2) Signature Services	\$600.00
	Standard Memorial Package -Guest Book, 100 quarter fold service folders, 1 Candle, 1 Memorial Print & 50 Acknowledgement Cards	\$395.00
	Floral Allowance	\$395.00
	<b>Total Package Price</b>	<b>\$10,985.00</b>
	Service Savings	<b>(\$1,090.00)</b>
	<b>Package price with savings*</b>	<b>\$9,895.00</b>
	Safely Home (Travel Protection)	\$495.00
	Package price with Safely Home	\$10,390.00

<b>Casket upgrade options:</b>	Clifton Select Harwood 41X 8Q3 UHD (263630)	\$4,040.00
	Sand 20g Q01 8K3 AH (242478)	\$3,460.00
	Argo Silver 20g 8N1 D (278920)	\$3,460.00
	Carnation 20g M39 825 CH (273920)	\$3,460.00

\*Does not include sales tax

Flowers may be upgraded within the package offering



## **Basic** Burial Package

<b>Services:</b> Basic Services of Funeral Director and staff	\$2,820.00
Embalming	\$995.00
Dressing and Casketing	\$380.00
Visitation	\$390.00
Chapel, church or graveside service	\$735.00
Transfer to our facility from place of death	\$795.00
Funeral vehicle/Hearse	\$400.00
Service Car	\$200.00
<b>Total Services</b>	<b>\$6,715.00</b>

<b>Merchandise:</b> Casket allowance for the following:	\$1,270.00
Apollo Copper 20g CM1 8F2 A (221504)	
Apollo Silver 20g CM1 8F2 A (221502)	
One (1) Signature Services	\$300.00
Basic Memorial Package -Guest Book, 100 quarter fold service folders, 1 Candle & 50 Acknowledgement Cards	\$325.00
Floral Allowance	\$295.00
<b>Total Package Price</b>	<b>\$8,905.00</b>
Service Savings	<b>(\$480.00)</b>
<b>Package price with savings*</b>	<b>\$8,425.00</b>
Safely Home (Travel Protection)	\$495.00
Package price with Safely Home	\$8,920.00

\*Does not include sales tax

Flowers may be upgraded within the package offering





# Veterans Burial Package

<b>Services:</b> Basic Services of Funeral Director and staff	\$2,820.00
Embalming	\$995.00
Dressing and Casketing	\$380.00
Visitation	\$390.00
Chapel, church or graveside service	\$735.00
Transfer to our facility from place of death	\$795.00
Funeral vehicle/Hearse	\$400.00
Service Car	\$200.00
<b>Total Services</b>	<b>\$6,715.00</b>

	<u>Custom</u>	<u>Premium</u>	<u>Standard</u>
<b>Recommended Casket</b>	\$4,620.00	\$4,040.00	\$2,880.00
	Neapolitan Silver 18g N01 8BS H (279144)	Clifton Select Hrwd 41X 8Q3 UHD (263630)	Revere Silver 20g M39 825 CH(271821)
	Midnight Gold 18g N01 8BG H (279142)		
<b>Signature Services</b>	(3) \$900.00	(3) \$900.00	(2) \$600.00
<b>Memorial Package</b>	\$545.00	\$545.00	\$395.00
<b>Floral Allowance</b>	\$795.00	\$595.00	\$395.00
<b>Total Package</b>	\$13,575.00	\$12,795.00	\$10,985.00
<b>Service Savings</b>	(\$1,880.00)	(\$1,780.00)	(\$1,090.00)
<b>Package Price with savings*</b>	<b>\$11,695.00</b>	<b>\$11,015.00</b>	<b>\$9,895.00</b>
<b>Safely Home (Travel Protection)</b>	\$495.00	\$495.00	\$495.00
<b>Package with Safely Home</b>	\$12,190.00	\$11,510.00	\$10,390.00

\*Does not include sales tax and Flowers may be upgraded within the package offering

DD-214 or Military ID required

No refund or credit will be issued for package goods of services which remain unused by the customer at the time of need.





# Ceremonial Cremation Package

<b>Services:</b> Basic Services of Funeral Director and staff	\$2,820.00
Embalming	\$995.00
Dressing and Casketing	\$380.00
Visitation	\$390.00
Chapel, church or graveside service	\$735.00
Transfer to our facility from place of death	\$795.00
Funeral vehicle/Hearse	\$400.00
Service Car	\$200.00
Cremation Fee	\$295.00
<b>Total Services</b>	<b>\$7,010.00</b>

	<u>Premium</u>	<u>Standard</u>	<u>Basic</u>
<b>Container</b>	\$4,040.00	\$1,765.00	\$1,660.00
	Montgomery 4v4825 HD (249223)	Beckham Rental (253476)	Brockton Oak Rental (253467)
<b>Signature Services</b>	(3) \$900.00	( 2) \$600.00	(1) \$300.00
<b>Memorial Package</b>	\$545.00	\$395.00	\$325.00
<b>Floral Allowance</b>	\$595.00	\$395.00	\$295.00
<b>Urn</b>	\$440.00	\$330.00	\$220.00
<b>Total Package</b>	\$13,530.00	\$10,495.00	\$9,810.00
<b>Service Savings</b>	(\$1,730.00)	(\$1,430.00)	(\$1,130.00)
<b>Package Price with savings*</b>	<b>\$11,800.00</b>	<b>\$9,065.00</b>	<b>\$8,680.00</b>
<b>Safely Home (Travel Protection)</b>	\$495.00	\$495.00	\$495.00
<b>Package with Safely Home</b>	\$12,295.00	\$9,560.00	\$9,175.00

\*Does not include sales tax

Flowers may be upgraded within the package offering



# Memorial Cremation Package

<b>Services:</b> Basic Services of Funeral Director and staff	\$217.00
Refrigeration	\$395.00
Chapel, church or graveside service	\$735.00
Transfer to our facility from place of death	\$795.00
Cremation Fee	\$295.00
<b>Total Services</b>	<b>\$2,437.00</b>

	<u>Premium</u>	<u>Standard</u>	<u>Basic</u>
<b>Container</b>	\$700	\$560.00	\$220.00
	<b>Stratus</b> Container (177129)	<b>Trayview</b> Container (248507)	<b>Basic Cardboard</b> Container (71011332) (ALCCTNR)
<b>Signature Services</b>	( 3 ) \$900.00	( 2 ) \$600.00	( 1 ) \$300.00
<b>Memorial Package</b>	\$545.00	\$395.00	\$325.00
<b>Floral Allowance</b>	\$595.00	\$395.00	\$295.00
<b>Urn</b>	\$440.00	\$330.00	\$220.00
<b>Total Package</b>	\$5,617.00	\$4,717.00	\$3,797.00
<b>Service Savings</b>	<b>(\$900.00)</b>	<b>(\$600.00)</b>	<b>(\$300.00)</b>
<b>Package Price with savings*</b>	<b>\$4,717.00</b>	<b>\$4,117.00</b>	<b>\$3,497.00</b>
<b>Safely Home (Travel Protection)</b>	\$495.00	\$495.00	\$495.00
<b>Package with Safely Home</b>	\$5,212.00	\$4,612.00	\$3,992.00

\*Does not include sales tax

Flowers may be upgraded within the package offering



## **Basic** Cremation Package

<b>Services:</b> Basic Services of Funeral Director and staff	\$217.00
Refrigeration	\$395.00
Transfer to our facility from place of death	\$795.00
Cremation Fee	\$295.00
<b>Total Services</b>	<b>\$1,702.00</b>

	<u><b>Premium</b></u>	<u><b>Standard</b></u>	<u><b>Basic</b></u>
<b>Container</b>	\$700.00	\$560.00	\$220.00
	<b>Stratus</b> Container (177129)	<b>Trayview</b> Container (248507)	<b>Basic Cardboard</b> Container (AMBCRDBX)
<b>Total Package</b>	<b>\$2,402.00</b>	<b>\$2,262.00</b>	<b>\$1,922.00</b>
Safely Home (Travel Protection)	\$495.00	\$495.00	\$495.00
Package <i>with</i> Safely Home	\$2,897.00	\$2,757.00	\$2,417.00

\*Does not include sales tax

Flowers may be upgraded within the package offering





# GENERAL PRICE LIST

The goods and services shown below are those we can provide to our customers. You may choose only the items you desire. **However, any funeral arrangements you select will include a charge for our basic services and overhead.** If legal or other requirements mean you must buy any items you did not specifically ask for, we will explain the reason in writing on the statement we provide describing the funeral goods and services you selected.

## BASIC SERVICES OF THE FUNERAL DIRECTOR AND STAFF AND OVERHEAD:

This fee for our basic services and overhead will be added to the total cost of the funeral arrangements you select. This fee is already included in our charges for direct cremations, immediate burials, and forwarding and receiving remains. This fee included the following: \$2,820.00

- ~Personnel available 24 hours a day, 354 days a year to respond to initial call Arrangement Conference.
- ~Coordinating service plans with cemetery, crematory, and/or other parties involved in the final
- ~Preparation of necessary forms for governmental agencies
- ~Also covers overhead, including facility maintenance, equipment and inventory costs, liability insurance and governmental compliance costs

## PREPARATION OF THE BODY:

Except in certain special cases, embalming is not required by law. Embalming may be necessary if you select certain funeral arrangement, such as a funeral with a viewing. If you do not want embalming, you usually have the right to choose an arrangement that does not require you to pay for it, such as direct cremation or immediate burial.

Embalming \$995.00

## OTHER PREPARATION OF THE BODY:

Dressing and casketing of deceased	\$380.00
Bathing and handling of unembalmed deceased for identification viewing	\$120.00
Hairdresser	\$25.00
Special care for autopsied cases	\$205.00
Restoration (per hour/where necessary)	\$130/hr
Refrigeration (Required of unembalmed remains after 24 hours)	\$395.00

## USE OF FACILITIES AND STAFF:

Use of facilities and staff services for Visitation (4 Hours Maximum)	\$390.00
~Includes set-up of visitation area, placement of encased remains, display of floral arrangements, supervision of and attendance during the visitation	
Use of facilities and staff services for Visitation (per hour)	\$100.00
~Includes set-up of visitation area, placement of encased remains, display of floral arrangements, supervision of and attendance during the visitation	
Use of facilities and staff services for Visitation, same day as service (1 hour prior)	\$100.00
~Includes set-up of visitation area, placement of encased remains, display of floral arrangements, supervision of and attendance during the visitation	
Use of facilities and staff service for Funeral Service in Our Chapel	\$735.00
~Includes coordinating the funeral arrangements, supervision of funeral, and staff to assist with the funeral ceremony	



Staff services for Funeral Service at Religious Facility	\$735.00
~Includes coordinating the funeral arrangements, supervision of funeral, and staff to assist with the funeral ceremony.	
Use of facilities and staff services for Memorial Service (without remains present) in our chapel	\$735.00
~Includes coordinating the memorial service arrangements, supervision of memorial, and staff to assist with the service.	
Staff Services for Memorial Service (without remains present) at Other Facility	\$735.00
~Includes coordinating the memorial service arrangements, supervision of the memorial, and staff to assist with the service.	
Equipment and Staff Services for Graveside Service	\$735.00
~Includes accompaniment of remains to crematory, supervision of service, display of floral arrangements and staff to assist with the service.	
Equipment and Staff Services for Service at the Crematory	\$500.00
~Includes accompaniment of remains to crematory, supervision of service, display of floral arrangements and staff to assist with the service.	
Additional Charge for Use of Facilities and Staff on Holidays	\$650.00
Additional Charge for Use of Facilities and Staff on Weekends	\$650.00
Reception Room	\$300.00
Overnight Visitation (In addition to regular visitation fees)	\$1000.00
Chapel Rental Fee (when other San Diego County mortuary is used)	\$3,555.00

#### **TRANSPORTATION:**

~Within a 30 mile radius and a maximum time of 3 hours total usage

Transfer of remains from place of death to funeral home	\$795.00
Funeral vehicle (Hearse)	\$400.00
Limousine	\$795.00
Transfer to or from airport	\$215.00
Transfer from funeral home to place of autopsy and return to funeral home	\$295.00
Service vehicle	\$200.00
Additional hours	\$75/hr
Additional distance (Outside 30 mile radius)	\$5/mi

#### **FORWARDING REMAINS TO ANOTHER FUNERAL HOME: \$2,610.00**

This charge includes use of preparation room, Basic Services of the Funeral Director and Staff, embalming, bathing and handling of unembalmed remains, Transfer of the remains to the Funeral Establishment, transportation to or from local airport or other place of shipment within a 30-mile radius and obtaining necessary authorizations. This charge does not include visitation or ceremonies. This charge applies to shipment within the continental U.S. only.

#### **RECEIVING REMAINS FROM ANOTHER FUNERAL HOME: \$2,215.00**

This charge includes Basic Services of the Funeral Director and Staff, transportation of remains to cemetery, transportation to or from local airport or other place of shipment within a 30-mile radius and obtaining necessary authorizations. This charge does not include visitation or ceremonies.



**DIRECT CREMATION:**

\$1,702 to \$19,892

If you want to arrange a direct cremation, you can use an alternative container. Alternative containers encase the body and can be made of materials like fiberboard or composition materials (with or without an outside covering). The containers we provide are alternative containers and other cremation containers, including containers made of wood, fiberboard, and containers made of other composite materials. See descriptions below.

Our charges for direct cremation (without ceremony) include refrigeration, Transfer of the Remains to the Funeral Establishment, Basic services of the Funeral Director and Staff, and the crematory fee.

Direct Cremation with container provided by the purchaser \$1,702.00

~All such containers must meet any applicable state of crematory requirements

Direct Cremation with Vista Driftwood Cremation Container \$2,203.00

~Hardboard, Satin Gray Finish, Pillow and Plastic Liner Interior

Direct Cremation with Transport Cremation Container \$2,142.00

~Cardboard, Woodgrain Finish, Pillow and Plastic Liner Interior

Direct Cremation with Basic Cardboard Box \$1,922.00

~Heavy Cardboard, plain finish, no interior

Direct Cremation with casket from our facility (in addition to cost of casket) \$1,702.00

**IMMEDIATE BURIAL:**

\$2,615 to \$20,805

Does not include any rites or ceremonies at the funeral home, graveside or elsewhere. It does include Basic Services of the Funeral Director and staff, refrigeration, Transfer of the remains to the Funeral Establishment and/or transportation of remains to cemetery or crematory.

Immediate Burial with container provided by the purchaser \$2,615.00

~All such containers must meet any applicable state or cemetery requirements

Immediate Burial with casket selected from our facility ~In addition to cost of casket—see Casket Price List for casket prices \$3,765 to \$20,805



**CASKETS:**

A complete price list will be provided at the funeral home

Caskets regularly offered for sale:

\$1,150 to \$18,190

Alternative Containers regularly offered for sale:

\$220 to \$1,850

**RENTAL CASKET:**

\$1,660 to \$1,765

Refer to Casket Price List as provided at the funeral establishment. If you choose a funeral service where a rental casket is provided, the casket used for the funeral service may have been used in a previous funeral service. If the casket has been used in a previous funeral service, the interior lining has been replaced.

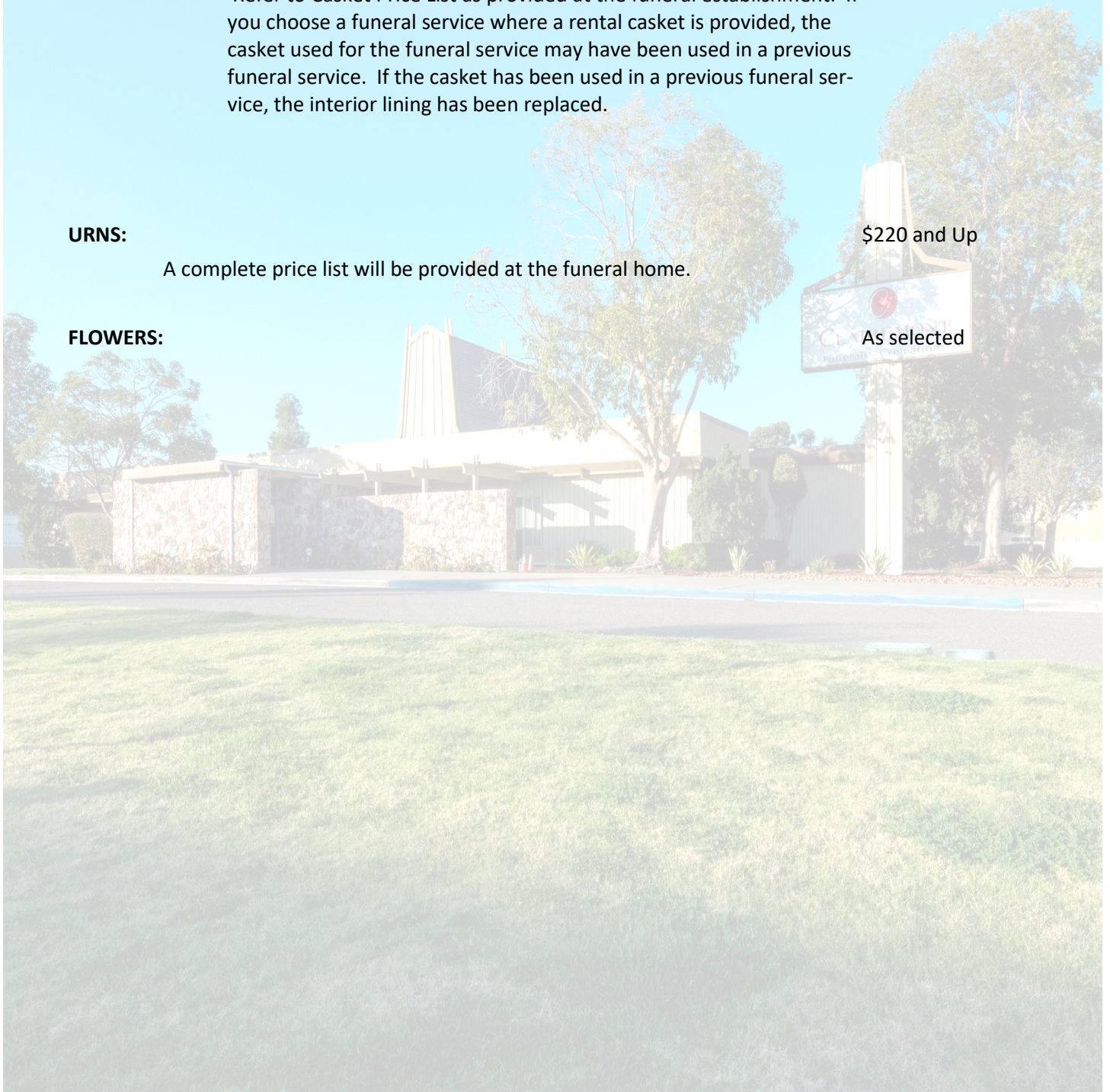
**URNS:**

\$220 and Up

A complete price list will be provided at the funeral home.

**FLOWERS:**

As selected





**OTHER:**

Acknowledgement Cards—per set of 25 (XMDACKCD)	\$39.00
Air Tray (AAIRTRAY)	\$281.00
Bagpiper (XSRBAGPR)	\$900.00
Framed Canvas Memorial Portrait (XMDFMMPT)	\$600.00
Cap Panel insert (XMDCSKPN)	\$600.00
Catered Receptions (XSCATER)	\$495.00 & Up
Combination Unit (ASHPCNR)	\$308.00
Cremation Witnessing Fee (CRMWTNFE)	\$500.00
Crematory Fee (CRMNSMG)	\$295.00
Cross/Crucifix (XMDCRUFX)	\$39.00
Ceremonial Dove Release (XSRDVREL)	\$900.00
DVD Memorial Tribute (XMDDVD)	\$300.00
Ensure —a— Seal (XMDENSUR)	\$655.00
Flag Case - Walnut Finish (XMD103)	\$695.00
Flag Case - Oak Finish (XMD101) or Cherry Finish (XMD102) - offered as signature service	\$600.00
Horse & Carriage (XSRHORFC)	\$1200.00
Life Symbol & Medallions (In addition to those included w/casket)	\$50.00 each
Limousine (VHCLIMOS)	\$795.00
Mailing of cremated remains (excluding cost of mailing container) (CRMMAILC)	\$115.00
Mariachi—Live band at graveside for 1 hour (XSRBMUSC)	\$1200.00
Memorial Book (XMDREGBK)	\$110.00
Memorial Candle (XMDCANDL)	\$44.00
Memorial Packages (PKGBASIC)	\$325.00 and up
Memorial Bracelets - per 50 (XMDCWRB)	\$300.00
Prayer Cards (per 100) (XMDPRYCD) Unlaminated	\$61.00
Prayer Cards (per 100) (XMDPRYCD) Laminated	\$121.00
Thumbies Fingerprint Pendant (404690)	\$600.00
Reception Room (includes tables, chairs and plastic table covering) (FACRECPT)	\$300.00
Registration and Documentation for International Ship Outs (SRVINTRN)	\$500.00
Remembrance Blanket (XMDBLKET)	\$300.00
Rosary (XMDROSARY)	\$39.00
Scattering of cremated remains at sea (CRMSCSEA)	\$295.00
Service Folders Quarter Fold (per 100) (XMDSRFLD)	\$110.00
Service Folders Half Fold (per 100) (XMDSRFLD)	\$165.00
Service Folders Tri-Fold (per 100) (XMDSRFLD)	\$220.00
Ziegler Case (AZIEGLER)	\$765.00





4266 Mt. Abernathy Avenue

San Diego, California 92117

Phone: (858) 279-2211 ~ [www.ClairemontMortuary.com](http://www.ClairemontMortuary.com) ~ Fax: (858) 279-2244

FD 1126

### CASKET PRICE LIST

These prices are effective as of February 12th, 2024 but are subject to change without notice.

CASKETS REGULARLY OFFERED FOR SALE: \$1,150 to \$18,190

ALTERNATIVE CONTAINERS REGULARLY OFFERED FOR SALE: \$220 to \$1,850

RENTAL CASKETS: \$1,660 to \$1,765

**THERE IS NO EVIDENCE THAT ANY CASKET REPRESENTED AS HAVING PROTECTIVE FEATURES,  
WHICH MAY INCLUDE A GASKET, WILL PRESERVE HUMAN REMAINS.**

#### BATESVILLE WOOD CASKETS:

~ 710 President - Cut Top - Hardwood (277264) Mahogany with High Polished Dark Finish Almond Velvet Interior	\$18,190.00
~ Pearson Cherry 7V 828 HD (202512) Cherry Dark Hardwood Champagne Velvet Interior	\$9,940.00
~ Autumn Oak Leaf 5AR 825 HD (146884) Medium Brown Hardwood Rosetan Crepe	\$6,930.00
Gurnet 4BH 891 D (146825) Dark Select Hardwood Rosetan Crepe	\$4,040.00
~ Clifton 41X 8Q3 UHD (263630) Dark Select Hardwood Rosetone Crepe Interior	\$4,040.00
~ Montgomery 4V4 825 HD (249223) Dark Select Hardwood Rosetan Crepe Interior	\$4,040.00
Libra Harvest Brown 427 880 D (241727) Dark Brown Select Hardwood Rosetan Crepe Interior	\$2,880.00
~ Libra Light Brown 427 880 D (248177) Light Brown Select Hardwood Rosetan Crepe Interior	\$2,880.00



**BATESVILLE METAL CASKETS:**

~Primrose Bronze Z65 8JC DN (280184)	\$13,860.00
32oz White Solid Bronze	
Moss Pink Velvet Interior	
~Tapestry Rose Y46 844 DHN (147951)	\$9,940.00
32oz Copper Gasketed Casket	
Moss Pink Velvet Interior	
~ Aegean Bronze O39-884IDH (147862)	\$9,940.00
32oz Bronze Gasketed Casket	
Champagne Velvet Interior	
~Mediterranean Copper Y35 825 DH (147930)	\$9,240.00
32oz Bronze Gasketed Casket	
Champagne Velvet Interior	
~Aegean Copper Y39 884 IDH (147935)	\$9,240.00
32oz Copper Gasketed Casket	
Champagne Velvet Interior	
~Blue Mist U04 872 CDH (147903)	\$6,930.00
Light Blue Stainless Steel Gasketed Casket	
Light Blue Velvet Interior	
~Silver Sapphire UG1 828 CDH (185491)	\$6,930.00
Blue Stainless Steel Gasketed Casket	
Silver Velvet Interior	
~Silver Platinum U23 827 DH (147907)	\$6,930.00
Silver Stainless Steel Gasketed Casket	
Ivory Velvet Interior	
~Platinum OT9 8L7 DH (211993)	\$5,770.00
Silver 18 Gauge Steel Gasketed Casket	
Silver Velvet Interior	
~Finch QC1 8K3 UH (280218)	\$5,770.00
Blue 18 Gauge Steel Gasketed	
Basketweave Interior	
~Neopolitan Silver N01 8BS H (279144))	\$4,620.00
Silver 18 Gauge Steel Gasketed Casket	
Blue Velvet Interior	
~Midnight Gold N01 8BG H (279142)	\$4,620.00
Black 18 Gauge Steel Gasketed with Midnight Blue Finish	
Black Velvet w/Gold Interior	





~Virgo Blue N19 8K9 DH (279127)	\$4,040.00
Blue 18 Gauge Steel Gasketed Casket	
Light Blue Interior	
~Merlot N01 8K3 CDH (239723)	\$4,040.00
Burgandy 18g Steel Gasketed Casket	
Rosetan Crepe Interior	
~Virgo White N19 8K9 DH (279134)	\$4,040.00
White 18 Gauge Steel Gasketed Casket	
Silver Crepe Interior	
~Sand Q01 8K3 AH (242478)	\$3,460.00
Gold 20 Gauge Steel Gasketed Casket	
Rosetan Crepe Interior	
~Argo Silver 8N1 D (278920)	\$3,460.00
Silver 20 Gauge Steel Gasketed Casket	
Ivory Crepe Interior	
~Carnation M39 825 CH (273920)	\$3,460.00
White 20 Gauge Steel Gasketed with Silver Finish	
Ivory Crepe Interior	
~Revere Silver M39 825 Ch (271821)	\$2,880.00
Silver 20 Gauge Steel Gasketed Casket	
Velvet Crepe Interior	
~Roman Q88 832 A (148031)	\$2,880.00
Brown 20 Gauge Steel Gasketed Casket	
Rosetan Crepe Interior	
~Antique Gold Q88 832 A (148048)	\$2,880.00
Gold 20 Gauge Steel Gasketed Casket	
Rosetan Crepe Interior	
~Pisces White QD2 8F3 A (257953)	\$2,880.00
White 20 Gauge Steel Gasketed Casket	
Ivory Crepe Interior	
~Apollo Silver CM1 8F2 A (221502)	\$1,270.00
Silver 20 Gauge Steel Non-Gasketed Casket	
Ivory Crepe Interior	
~Apollo Copper CM1 AF2 A (221504)	\$1,270.00
Brown 20 Gauge Steel Non-Gasketed Casket	
Rosetan Crepe Interior	
~Grey Doeskin Oval Top (Suitable for cremation)	\$1,150.00
Grey Cloth Covered Casket of wood construction-White Crepe Interior	



**BATESVILLE TRADITIONAL ALL WOOD CONSTRUCTION:**

~Unfinished 22L No Handles 4G1 H HW (148160)	\$2,190.00
Light Unfinished Wood	
Ivory Crepe Interior	
~Pine 52X Square H 6P1 (148099)	\$1,850.00
Light Pine Finish w/Handles	
Unlined Interior	

**BATESVILLE CREMATION ORIENTED CASKETS:**

~Lyra Brown Pine (269152 )	\$1,850.00
Dark Brown Pine	
Rosetan Crepe Interior	
~Shaker Pine with Handles (23930)	\$1380.00
Wood Composite	
Ivory Crepe Interior	
~Grey Doeskin Oval Top ( 147970)	\$1,150.00
Grey Cloth Covered Casket Ivory Crepe Interior	

**ALTERNATIVE CONTAINERS:**

~Stratus Alternative Cremation Container ((177129)	\$700.00
Wood Composite	
No Interior	
~Trayview Alternative Cremation Container (248507)	\$560.00
Dark Woodgrain Cardboard Finish	
White Crepe Interior	
~Basic Cardboard Container (71011332) (ALCCTNR)	\$220.00
Kelcor Plain Finish	
No Interior	

**BATESVILLE RENTAL CASKETS:**

~Beckham Cherry Rental Casket (253476)	\$1,765.00
Solid Cherry Hardwood	
Champagne Velvet Interior	
~Brockton Oak Rental Casket (253467)	\$1,660.00
Solid Oak Harwood	
Rosetan Crepe Interior	