



South Park

FUNERAL HOME • CEMETERY
CREMATORY

1310 North Main Street ♦ Pearland, TX 77581
(281) 509-9228 ♦ www.SouthParkFunerals.com

NorthStar Funeral Services of Texas, LLC, d/b/a



Prices are effective September 20, 2023 and are subject to change without notice

GENERAL PRICE LIST

Including: Casket, Urn & Outer Burial Container Price Lists

*It is our promise to meet or beat any local funeral home's
published price for services and merchandise.*

COMPLETE FUNERAL PACKAGES

To help make funeral planning easier for you, we offer several Meaningful Memories Cremation and Burial Packages. These packages provide you with a wide range of selections, options and prices. Most importantly, they allow you to spend more time personalizing the ceremony as you celebrate the life of the person you are honoring. Many of the packages are designed to provide a complete funeral ceremony, including both the professional services and the necessary merchandise. Detailed descriptions of the various packages are included in this brochure. If you decide not to choose one of these complete packages, you may choose the necessary items from our General Price List individually.

OUR PAYMENT POLICY

To lose someone you love is a devastating human experience. It is frequently traumatic and can seriously impact judgment. We believe in the importance of the recognition and meaningful celebration of a life that has been lived and will assist in arranging an appropriate service to meet your individual needs. It is also important to be realistic in respect to funeral expenditures. We do not want a family to spend more than they should, nor less than they would like. What is important is that the arrangements be in keeping with the family's wishes and budget. Provisions for payment are due at the time of the arrangement conference. To avoid any possibility of misunderstanding or embarrassment and for your convenience, we accept the following methods of payment: money order or cashier's check, check, credit or debit card, insurance assignments of verifiable life insurance policies, payment by forwarding or receiving funeral homes or pre-paid funeral plan. **Cash is not accepted.** Please feel free to consult your funeral director with any and all questions or concerns.

PRE-PLANNING ASSISTANCE

We provide free assistance with pre-planning. You have the option of locking in today's prices by funding your funeral plan and relieving your loved ones from the financial burden and making these difficult decisions or simply placing your wishes on file and allowing costs to be paid at the time of need.





General Price List

Prices are effective September 20, 2023 and are subject to change without notice!

The goods and services shown below are those we can provide to our customers. You may choose only the items you desire. However, any funeral arrangements you select will include a charge for our basic services and overhead. If legal or other requirements mean you must buy any items you did not specifically ask for, we will explain the reason in writing on the statement we provide describing the funeral goods and services you selected. Unless legal or other requirements mean you must buy any items not specifically asked for, you will be charged only for those items you select.

Basic Services of the Funeral Director, Staff and Overhead..... \$3,550.00

This fee for our basic services and overhead will be added to the total cost of the funeral arrangements you select. This fee is already included in our charges for direct cremations, immediate burials, and forwarding or receiving remains.) This fee includes but is not limited to the following

1. Staff to respond to the initial request for service 24 hours a day, 365 days a year
2. Preparation, securing and filing of necessary permits and certificates
3. Conducting the Arrangement Conference
4. Coordinating service plans with cemetery, crematory, vault company and/or other parties involved in the final disposition of the deceased
5. Clerical assistance in the completion of various forms, placing notices and permits associated with a funeral

Also included in this charge are overhead expenses relative to our facility such as insurance, secretarial and administrative expenses, maintenance and utility expenses, equipment and inventory costs and governmental compliance.



Preparation of the Body

Except in certain special cases, embalming is not required by law. Embalming may be necessary, however, if you select certain funeral arrangements, such as a funeral with viewing. If you do not want embalming, you usually have the right to choose an arrangement that does not require you to pay for it, such as direct cremation or immediate burial.

Embalming.....	\$1,450.00
Dressing and Casketing of deceased.....	\$325.00
Bathing and Handling of the deceased.....	\$325.00
Restoration	\$350.00
Special Care for Autopsied and Bone Donation Cases.....	\$350.00
Minimal Preparation of Non-Embalmed Deceased and Visitation room for 30 Minutes.....	\$350.00
Refrigeration - Up to 10 days after our firm takes remains into our care. It is the policy of our firm to require refrigeration of un-embalmed remains 24 hours after death	\$1,450.00
Custodial Care of the Remains per day or part thereof. This fee applies to embalmed and un-embalmed remains and will be charged beginning on the 11th day our facilities are used to shelter the remains.....	\$75.00

Use of Facilities and Staff

Use of Facilities and Staff Services for Visitation in our Chapel with or without viewing (Per 4-hour period). Our services include set-up of gathering area, placement of encased remains, display of floral arrangements, supervision of and attendance during the gathering.....	\$525.00
Use of Facilities and Staff Services for Visitation in our stateroom with or without viewing (Per 4-hour period). Our services include set-up of gathering area, placement of encased remains, display of floral arrangements, supervision of and attendance during the gathering.....	\$430.00
Use of Facilities and Staff Services for Ceremony in Our Chapel. Our services include coordinating the ceremonial arrangements, supervision of ceremony, and staff to assist with the ceremony.	\$525.00
Use of Staff Services for Ceremony at Other Facility. Our services include coordinating the ceremonial arrangements, supervision of the ceremony, and staff to assist with the ceremony.	\$525.00
Use of Facilities and Staff Services for Memorial Ceremony (without remains present) in Our Chapel. Our services include coordinating the memorial ceremony arrangements, supervision of the memorial ceremony service, and staff to assist with the ceremony.	\$525.00
Use of Staff Services for Memorial Ceremony (without remains present) at Other Facility. Our services include coordinating the memorial ceremony arrangements, supervision of the memorial ceremony, and staff to assist with the ceremony.	\$525.00
Equipment and Staff Services for Graveside Ceremony. Our services include accompaniment of remains to cemetery, supervision of graveside ceremony, and staff to assist with the ceremony.	\$525.00
Limited Funeral Director and Staff Services. Our services include Funeral Director Accompaniment of remains to cemetery, supervision of graveside ceremony for inurnment or burial.	\$495.00
Reception Room (2 Hours).....	\$430.00

Transportation

Transfer of deceased from place of death to funeral home (within a 35-mile radius).....	\$895.00
<i>Additional distance will be charged at \$3.50 per mile.</i>	
Funeral vehicle (e.g., Hearse) (within a 35-mile radius)	\$370.00
<i>Additional distance will be charged at \$3.50 per mile.</i>	
Family vehicle (e.g., Limousine) (Maximum 3-hour usage and within a 35-mile radius)	\$500.00
<i>Additional distance will be charged at \$3.50 per mile and/or \$75.00 for each additional hour or portion thereof.</i>	
Flower Van, Lead or Service Vehicle (within a 35-mile radius, Each Vehicle).....	\$170.00
<i>Additional distance will be charged at \$3.50 per mile.</i>	
Transfer to or from airport (within a 35-mile radius)	\$270.00
<i>Additional distance will be charged at \$3.50 per mile.</i>	
Transfer of Deceased from funeral home to place of autopsy (within a 35-mile radius)	\$270.00
<i>Additional distance will be charged \$3.50 per mile.</i>	

Forwarding Remains to Another Funeral Home

This charge includes removal of remains within 35 miles, basic service of staff, necessary authorizations, embalming, and use of preparation room and transportation to local airport or other place of shipment within a 35-mile radius (excluding shipping charges). This charge does not include gathering or ceremonies. This charge applies to shipment within the continental U.S. only. ... \$5,035.00

Receiving Remains from Another Funeral Home

This charge includes basic services of staff, transportation from local airport within 35 miles or other shipping destination and transportation of remains to cemetery or crematory within 35 miles. This charge does not include gathering or ceremonies

	\$3,790.00
--	------------

Memorial Service in Our Chapel with no Disposition

This charge includes the basic services and staff for a memorial service in our chapel when the burial or cremation has taken place at another facility

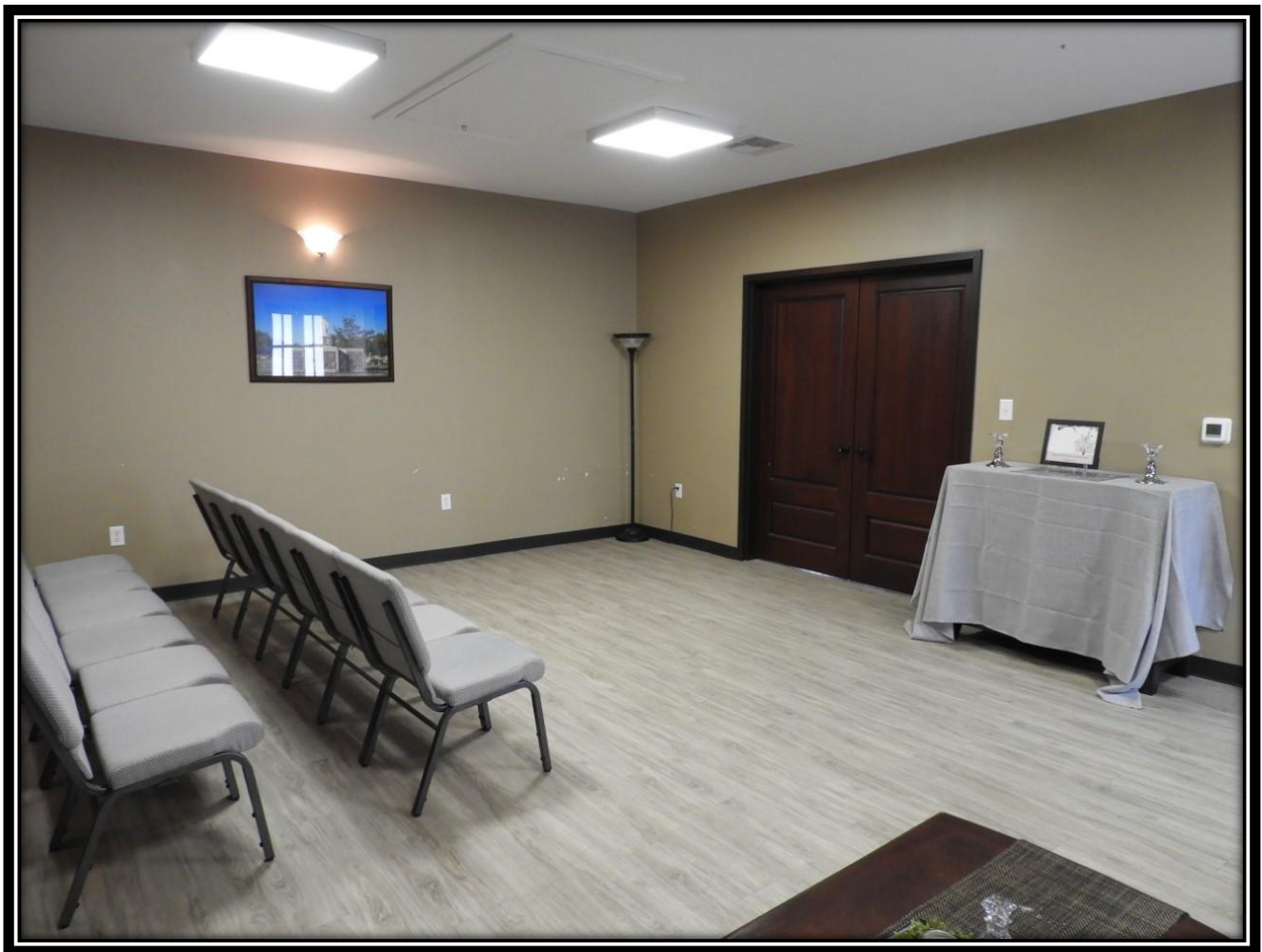
	\$2,595.00
--	------------



Direct Cremation

If you want to arrange a direct cremation, you can use an alternative container. Alternative containers encase the body and can be made of materials like fiberboard or composition materials (with or without an outside covering). The containers we provide are alternative containers and other cremation containers, including containers made of wood, containers made of fiberboard, containers made of cardboard and containers made of other composite materials. Our charges for direct cremation include removal of remains within 35 miles, transportation to crematory, refrigeration and basic services of staff. The crematory fee of \$310.00 is included.

Cremation without formal viewing or ceremony	\$3,220.00
<i>This charge does not include any funeral merchandise.</i>	
Direct cremation with container provided by the purchaser	\$3,085.00
<i>All such containers must meet any applicable state or crematory requirements.</i>	
Direct Cremation with a minimum cardboard alternative container	\$3,495.00
Direct Cremation with Trayview alternative container.....	\$4,205.00
<i>(See Casket Price List included in this brochure)</i>	
Family Present/Cremation Prayer Service	\$350.00



Cremation with Memorial Ceremony

This charge includes the basic service of staff, obtaining necessary authorizations, refrigeration, removal of remains from place of death within 35 miles, use of our chapel and staff for memorial ceremony or staff and equipment for memorial ceremony at another facility or graveside within 35 miles. The crematory fee of \$310.00 is included. Alternative container or casket is additional. This charge does not include any funeral merchandise or cash advance items. \$3,610.00

Traditional Cremation in Our Chapel

This charge includes the basic service of staff, obtaining necessary authorizations, embalming, dressing, casketing, removal of remains from place of death within 35 miles, visitation/gathering in our chapel (one day), funeral ceremony in our chapel, transportation to the crematory. The crematory fee of \$310.00 is included. Alternative container or casket is additional. This charge does not include any funeral merchandise, register book or printed materials, hairdresser or cash advance items. \$7,485.00

Traditional Cremation at Another Facility

This charge includes the basic service of staff, obtaining necessary authorizations, embalming, dressing, casketing and cosmetizing, removal of remains from place of death within 35 miles, visitation or gathering in our chapel (one day), funeral ceremony at another facility, hearse, transportation to the crematory. The crematory fee of \$310.00 is included. Alternative container or casket is additional. This charge does not include any funeral merchandise, register book or printed materials, hairdresser or cash advance items. This charge can include visitation or gathering and ceremony at an outside facility on the same day. Additional transportation charges may apply for visitation or gathering and funeral ceremony at an outside facility \$7,855.00

Mailing of Cremated Remains

Handling, packaging and mailing of cremated remains.....\$180.00

Immediate Burial

Our charges for immediate burial at our convenience (without any gathering or ceremonies at the funeral home, graveside or elsewhere) include basic services of staff, necessary authorizations, removal of remains from place of death within 35 miles, refrigeration and use of preparation room, dressing, casketing and/or cosmetizing of deceased and transportation to cemetery.

Immediate burial with container provided by the purchaser (All such containers must meet any applicable state or cemetery requirements).....\$4,735.00

Immediate burial with minimum casket from our facility (Apollo Copper 20-gauge steel \$1,625.00) ...\$6,360.00

Immediate burial with casket selected from our facility.....\$4,735.00
(Casket is additional. See the Casket Price List for details).

Traditional Service Options

Traditional Burial Chapel Service

This charge includes the basic service of staff, obtaining necessary authorizations, embalming and dressing casketing, removal of remains from place of death within 35 miles, visitation or gathering in our chapel (one day), funeral ceremony in our chapel, hearse to the cemetery (within 50 miles) and service car. Casket is additional. This charge does not include any funeral merchandise, register book or printed materials, hairdresser or cash advance items.\$7,715.00

Traditional Burial Church Service

This charge includes the basic service of staff, obtaining necessary authorizations, embalming and dressing casketing, removal of remains from place of death within 35 miles, visitation or gathering in our chapel (one day), funeral ceremony at another facility, hearse to the cemetery and service car. This charge does not include any funeral merchandise, register book or printed materials, hairdresser or cash advance items. This charge can include visitation or gathering and ceremony at an outside facility on the same day. Additional transportation charges may apply for visitation or gathering and funeral ceremony at an outside facility on separate days.....\$7,715.00

Traditional Burial Graveside Service with Visitation

This charge includes the basic service of staff, obtaining necessary authorizations, embalming and dressing casketing, removal of remains from place of death within 35 miles, visitation or gathering in our chapel (one day), funeral ceremony at the graveside, hearse to the cemetery (within 35 miles) and service car. Casket is additional. This charge does not include any funeral merchandise, register book or printed materials, hairdresser or cash advance items.\$7,715.00

Traditional Burial with Chapel or Church Service (No Viewing)

This charge includes the basic service of staff, obtaining necessary authorizations, embalming, or refrigeration, dressing and casketing, removal of remains from place of death within 35 miles, funeral ceremony in our chapel or another facility (within 35 miles), hearse to the cemetery (within 35 miles) and service car. Casket is additional. This charge does not include any funeral merchandise, register book or printed materials, hairdresser or cash advance items.\$7,285.00

Traditional Burial with Graveside Service (No Viewing)

This charge includes the basic service of staff, obtaining necessary authorizations, embalming or refrigeration, dressing and casketing, removal of remains from place of death within 35 miles, funeral ceremony at the graveside, hearse to the cemetery (within 35 miles) and service car. Casket is additional. This charge does not include any funeral merchandise, register book or printed materials, hairdresser or cash advance items.\$7,285.00



Services and Merchandise

Signature Services:

Memory Portrait	\$325.00
Tribute DVD	\$325.00
Memorial Photo Blanket	\$325.00
Balloon Release	\$325.00
Flag Case	\$325.00
Butterfly Release	\$325.00
Thumbprint Pocket Knife	\$325.00
Thumbprint Jewelry Sterling Silver	\$650.00
Flight Home Ceremony (White Doves)	\$650.00
Mariachi Band	\$975.00
Bagpipes	\$975.00
Harpist	\$975.00
Horse-drawn Carriage	\$1625.00

Other Services and Merchandise

Safely Home Travel Protection Plan.....	\$495.00
Casket Head Panel.....	\$325.00
Additional DVD copies.....	\$30.00
Memory Candle.....	\$35.00
Death Certificate Amendment.....	\$95.00
Certified Mailing of Death Certificates via USPS.....	\$15.00 & up
Crematory Fee.....	\$310.00
Cremation in excess of 300 lbs. additional fee.....	\$250.00
Laminated Obituaries.....	\$10.00 each
Customized Laminated Prayer Cards per 100	\$150.00
Prayer Cards per 50 (\$1.00 each in sets of 8)	\$50.00
Flowers in our catalog.....	\$25.00 to \$900.00
Cremation Keepsake Urns, Jewelry, Stands, Glass.....	\$95.00 to \$500.00
Urns.....	\$50.00 & up
Parting Stone Solidified Remains.....	\$995.00
Memorial Programs (per 50)	\$75.00 & up
Precious Memories Fingerprint Keepsakes.....	\$295.00 & up
Register Book Package.....	\$195.00 to \$295.00
Register Book Non Personalized	\$95.00
Air Tray.....	\$300.00
Combination Unit	\$440.00
Wood Shipping Container.....	\$850.00
International Document Preparation Fee	\$500.00
Cross/Crucifix	\$39.00
Ziegler Case.....	\$1,195.00
Wilbert Way Installation for Outer Burial Container	\$200.00
Memory Panel.....	\$295.00 & up
Acknowledgement Cards (per 50).....	\$50.00
Hairdresser.....	\$150.00
Clergy Honorarium.....	\$250.00 & up
Organist/Soloist.....	\$200.00 & up
Motorcycle Escorts* (per Motorcycle) (Minimum of 4).....	\$225.00 & up

*Out of county trips will be subject to additional charges



Signature Services



Three Credits



Five Credits



Three Credits



Two Credits



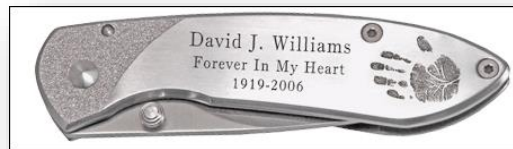
Three Credits



Two Credits



One Credit



One Credit



One Credit



One Credit



One Credit



One Credit



One Credit

South Park Funeral Home and Cemetery proudly offers our *Signature Services* designed to help enhance your memorialization experience and to make your service more meaningful for your family and friends. A complimentary selection of these options is included in most of our funeral and cremation packages.



South Park

FUNERAL HOME • CEMETERY
CREMATORY

Elite Package

Professional Services (\$7,715.00)

Funeral Director and Staff Services
Transfer into our care
Embalming
Dressing and Casketing

Facilities & Equipment

Visitation (4 Hour Period) In Stateroom
Funeral Service at
Chapel or Church
Funeral Coach
Service Vehicle

Casket Choices (\$10,990.00)

Y46 Tapestry Rose 32 Oz. Copper
Chancellor Solid Dark Walnut

Service Items

Premier Memorial Package (\$325.00)
Five (5) Signature Service Credits (\$325.00 each)

Total: \$20,655.00
Discount: -\$1,625.00
Package Price: \$19,030.00



Custom Package

Professional Services (\$7,715.00)

Funeral Director and Staff Services
Transfer into our care
Embalming
Dressing and Casketing

Facilities & Equipment

Visitation (4 Hour Period) In Stateroom
Funeral Service at
Chapel or Church
Funeral Coach
Service Vehicle

Casket Choices (\$6,135.00)

U23 Onyx Stainless Steel
U46 Tapestry Rose Stainless Steel
U04 Blue Mist Stainless Steel
Pearson Solid Cherry
Woodbridge Solid Pecan

Service Items

Premier Memorial Package (\$325.00)
Four (4) Signature Service Credits (\$325.00 each)

Total: \$15,475.00
Discount: -\$1,300.00
Package Price: \$14,175.00



Premium Package

Professional Services (\$7,715.00)

Funeral Director and Staff Services
Transfer into our care
Embalming
Dressing and Casketing

Facilities & Equipment

Visitation (4 Hour Period) In Stateroom
Funeral Service at
Chapel or Church
Funeral Coach
Service Vehicle

Casket Choices (\$4,705.00)

N01 Midnight Gold 18 Gauge Steel
N01 Neopolitan Silver 18 Gauge Steel
Bailey Hardwood Veneer
Brexton Dark Oak Veneer
OT9 Platinum Silver 18 Gauge Steel

Service Items

Standard Memorial Package (\$250.00)
Three (3) Signature Service Credits (\$325.00 each)

Total: \$13,645.00
Discount: -\$975.00
Package Price: \$12,670.00



Standard Package

Professional Services (\$7,715.00)

Funeral Director and Staff Services
Transfer into our Care
Embalming
Dressing and Casketing

Facilities & Equipment

Visitation (4 Hour Period) In Stateroom
Funeral Service at
Chapel or Church
Funeral Coach
Service Vehicle

Casket Choices (\$3,295.00)

Q88 Revere Silver 20 Gauge Steel
M39 Neopolitan Blue 20 Gauge Steel
M39 Auburn 20 Gauge Steel
Q88 Misty Rose 20 Gauge Steel
Q88 Churchill Blue 20 Gauge Steel

Service Items

Standard Memorial Package (\$250.00)
Two (2) Signature Service Credit (\$325.00 each)

Total: \$11,910.00
Discount: -\$650.00
Package Price: \$11,260.00



Basic Package

Professional Services (\$7,715.00)

Funeral Director and Staff Services
Transfer into our care
Embalming
Dressing and Casketing

Facilities & Equipment

Visitation (4 Hour Period) In Stateroom
Funeral Service at
Chapel or Church
Funeral Coach
Service Vehicle

Casket Choice (\$1,625.00)

Triton Brown 20 Gauge Steel

Service Items

Basic Memorial Package (\$215.00)
One (1) Signature Service Credit (\$325.00)

Total: \$9,880.00
Discount: -\$325.00
Package Price: \$9,555.00



Simple Ceremonial

Professional Services and Facilities & Equipment
\$7,485.00

Professional Services

Funeral Director and Staff Services
 Transfer into our care
 Embalming
 Dressing and Casketing
 Crematory Fee

Facilities and Equipment

Visitation (4 hour period) in Stateroom
 Funeral Service at
 Chapel or Church

<u>Premium</u>		<u>Standard</u>		<u>Basic</u>	
Montgomery Select	3,295.00	Ceremonial Oak	\$2,215.00	Bayview Beech	\$1,695.00
Urn Allowance	\$550.00	Urn Allowance	\$440.00	Urn Allowance	\$330.00
Standard Memorial Pkg.	\$250.00	Standard Memorial Pkg.	\$250.00	Standard Memorial Pkg.	\$250.00
Three (3) Signature Service Credits	(\$325.00 each)	Three (3) Signature Service Credits	(\$325.00 each)	Three (3) Signature Service Credits	(\$325.00 each)
Total:	\$12,555.00	Total:	\$11,365.00	Total:	\$10,735.00
Discount:	-\$975.00	Discount:	-\$975.00	Discount:	-\$975.00
Package Price:	\$11,580.00	Package Price:	\$10,390.00	Package Price:	\$9,760.00

*Additional fee of \$250.00 for cremation in excess of 300 lbs.
 If Service is at Church, Funeral Coach and Service Vehicle charges will apply.*



Simple Memorial

Professional Services and Facilities & Equipment
\$3,745.00

Professional Services

Funeral Director and Staff Services
 Transfer into our Care
 Refrigeration
 Crematory Fee

Facilities and Equipment

Memorial Service at
 Chapel or Church

<u>Premium</u>		<u>Standard</u>		<u>Basic</u>	
Trayview 27	\$985.00	Standard Brown Urn Allowance	525.00	Standard Cardboard Cont.	\$275.00
Urn Allowance	\$550.00	Standard Memorial Pkg.	\$250.00	Urn Allowance	\$330.00
Standard Memorial Pkg.	\$250.00	Two (2) Signature Service Credits	(\$325.00 each)	Standard Memorial Pkg.	\$250.00
Two (2) Signature Service Credits	(\$325.00 each)			Two (2) Signature Service Credits	(\$325.00 each)
Total:	\$6,180.00	Total:	\$5,610.00	Total:	\$5,250.00
Discount:	-\$650.00	Discount:	-\$650.00	Discount:	-\$650.00
Package Price:	\$5,530.00	Package Price:	\$4,960.00	Package Price:	\$4,600.00

Additional fee of \$250.00 for cremation in excess of 300 lbs.



Non-Ceremonial

Professional Services and Facilities & Equipment
\$3,220.00

Professional Services
 Funeral Director and Staff
 Transfer into our care
 Refrigeration
 Crematory Fee

<u><i>Premium</i></u>		<u><i>Standard</i></u>		<u><i>Basic</i></u>	
Trayview 27	\$985.00	Standard Brown	\$525.00	Standard Cardboard Cont.	\$275.00
Urn Allowance	\$550.00	Urn Allowance	\$440.00	Urn Allowance	\$330.00
One (1) Signature		One (1) Signature		One (1) Signature	
Service Credit	(\$325.00 each)	Service Credit	(\$325.00 each)	Service Credit	(\$325.00 each)
Total:	\$5,080.00	Total:	\$4,510.00	Total:	\$4,150.00
Discount:	-\$325.00	Discount	- \$325.00	Discount:	-\$325.00
Package Price:	\$4,755.00	Package Price:	\$4,185.00	Package Price:	\$3,825.00

Additional fee of \$250.00 for cremation in excess of 300 lbs.



Casket Price List

Prices are effective **September 20, 2023** and are subject to change without notice.

720 Provincial (201521) - Solid Mahogany, Full Polished Dark Red Finish, Velvet Interior	\$16,495.00
Z65 Tribune (280184) - 32 oz. Brushed Copper, Velvet Interior – 2 Options.....	\$14,175.00
Premier (148245) - Mahogany, Champagne Velvet Interior.....	\$13,075.00
Y46 Tapestry Rose (147951) - 32 oz. Brushed Copper, Moss Pink Velvet Interior.....	\$10,990.00
Chancellor (148255) – Solid Walnut, Champagne Velvet Interior	\$10,990.00
F15 Tiger Eye (271802) – 16ga Steel, Champagne Velvet Interior	\$7,565.00
U23 Onyx (147905) - Stainless Steel, Brushed Natural/Ebony Finish, Silver Velvet Interior	\$6,135.00
U46 Tapestry Rose (147901) - Stainless Steel, Moss Pink Velvet Interior.....	\$6,135.00
U04 Blue Mist (147903) - Stainless Steel, Brushed Silver Finish, Velvet Interior	\$6,135.00
Pearson (202512) – Dark Cherry Veneer, Velvet Interior.....	\$6,135.00
Woodbridge (146799) – Solid Pecan, Champagne Velvet Interior.....	\$6,135.00
Cameron (202513) – Oak Veneer, Champagne Velvet Interior.....	\$5,825.00
A58 White Rose (147738) - 18ga Steel, Antique White Finish, Velvet Interior	\$5,825.00
P89 Pieta Star Quartz (218068) - 18ga Steel, Champagne Velvet Interior	\$5,495.00
Weston (205163) – Select Hardwood Veneer, Rosetan Crepe Interior.....	\$5,135.00
A40 ND Primrose (147723) - 18ga Steel, Antique White/Silver Rose Finish, Pink Crepe Interior	\$4,890.00
NO1 Midnight Gold (279142) - 18ga Steel, Ebony Finish, Black Velvet Interior	\$4,705.00
NO1 Neopolitan Silver (279144) - 18ga Steel, Blue Velvet Interior	\$4,705.00
Bailey (263781) – Select Hardwood Veneer, Khaki Linwood Interior.....	\$4,705.00
Brexton (242572) - Oak Veneer, Champagne Velvet Interior.....	\$4,705.00
OT9 Platinum (211993) - 18ga Steel, Ivory Velvet Interior – 3 Options	\$4,705.00

Casket Price List [cont'd]

Prices are effective **September 20, 2023** and are subject to change without notice.

N19 Virgo Blue (279127) - 18ga Steel, Blue Finish, Light Blue Crepe Interior	\$4,395.00
NO1 Merlot (239723) - 18ga Steel, Burgundy Finish, Rosetan Crepe Interior.....	\$4,110.00
Delray (146853) – Select Hardwood Light, Rosetan Crepe Interior.....	\$3,735.00
Wineberry (278201) - 20ga Steel, Burgundy Finish, Silver Crepe Interior	\$3,385.00
Q88 Revere Silver (148029) - 20ga Steel Silver, Silver Crepe Interior	\$3,295.00
M39 Neopolitan Blue (271819) - 20ga Steel Blue, Ivory Velvet Interior.....	\$3,295.00
M39 Auburn (271815) - 20ga Steel Burgundy, Champagne Velvet Interior.....	\$3,295.00
Q88 Misty Rose (148035) - 20ga Steel Pink, Moss Pink Crepe Interior.....	\$3,295.00
Q88 Roman (148031) - 20ga Steel Brown, Rosetan Crepe Interior.....	\$2,745.00
Apollo Copper (221504) 20ga Steel Brown, Rosetan Crepe Interior.....	\$1,995.00
Triton Brown (100153) 20 Gauge Steel Brown, Crepe Interior.....	\$1,625.00

Oversized Caskets

The caskets listed below require an oversized outer burial container.

CM5 Hercules (265531) 20ga Steel Silver Ivory Crepe Interior.....	\$5,440.00
--------------------------------------------------------------------------	------------





Outer Burial Container Price List

Prices are effective **September 20, 2023** and are subject to change without notice.

In most areas of the country, state or local law does not require that you buy a container to surround the casket in the grave. However, many cemeteries require that you have such a container so that the grave will not sink in. Either a grave liner or burial vault will satisfy these requirements.

CONCRETE OUTER BURIAL CONTAINERS

Wilbert Bronze (OBCBZTRN)	30"x86"x26.5"	35"x91.6"x34.5"	\$34,040.00
Bronze Triune (OBCTRIUN)	30"x86"x26.5"	34.3"x90.5"x34.5"	\$8,315.00
Copper Triune (OBCCPTRN)	30"x86"x26.5"	34.3"x90.5"x34.5"	\$8,315.00
Stainless Steel Triune (OBSSSTRN)	30"x86"x26.5"	34.3"x90.5"x34.5"	\$7,065.00
Cameo Rose Triune (OBCCAMRS)	30"x86"x26.5"	34.3"x90.5"x34.5"	\$7,065.00
Venetian (OBVNTAN)	30"x86"x26.5"	34.5"x90.5"x34.5"	\$4,410.00
Continental (OBCCNTNL)	30"x86"x26.5"	34.3"x90.5"x34.5"	\$2,680.00
Salute (OBCLUTE)	30"x86"x26.5"	34.3"x90.5"x34.5"	\$2,435.00
Monticello (OBDMNTCL)	30"x86"x26.5"	34.3"x90.5"x34.5"	\$2,055.00
Concrete Rough Grave Liner (OBGRGLNR)	30"x86"x23"	34"x90"x29"	\$1,445.00
Companion Garden Crypt (OBDOUBL)	30"x86"x23.3"	34"x90"x55"	\$2,615.00

OVERSIZED OUTER BURIAL CONTAINERS

Monticello (WIMONT340)	34"x90"x31"	38.8"x94.5"x38.8"	\$4,565.00
Oversize Rough Grave Liner (OBCOVRSZ)	34"x90"x31"	39"x95"x36.3"	\$4,180.00

STEEL OUTER BURIAL CONTAINERS

10 Ga. Galvanized (OBMCL10G)	30"x86"x26.5"	34.3"x90.5"x34.5"	\$5,085.00
12 Ga. Galvanized (OBMCL12G)	30"x86"x26.5"	34.3"x90.5"x34.5"	\$4,080.00

URN OUTER BURIAL CONTAINERS

Monticello Urn Vault	\$1,920.00
Universal Urn Vault	\$855.00
Concrete Urn Grave Liner	\$675.00
Crown Urn Vault	\$350.00

OUR FUNERAL HOME MAKES NO REPRESENTATIONS OR WARRANTIES REGARDING CASKETS, VAULTS, URNS OR OTHER FUNERAL GOODS SOLD BY THE FUNERAL HOME. THE ONLY WARRANTIES, EXPRESSED OR IMPLIED, GRANTED IN CONNECTION WITH THE GOODS SOLD WITH THIS FUNERAL SERVICE ARE EXPRESSED WRITTEN WARRANTIES, IF ANY, EXTENDED BY THE MANUFACTURERS THEREOF. NO OTHER WARRANTIES, EXPRESSED OR IMPLIED, INCLUDING THE IMPLIED WARRANTIES OF MERCHANTABILITY OR FITNESS FOR A PARTICULAR PURPOSE, ARE EXTENDED BY THE FUNERAL HOME.



Cremation Casket and Alternative Container Price List

Prices are effective September 20, 2023 and are subject to change without notice.

Cremation Caskets

Montgomery Select	Dark Veneer, Rosetan Crepe Interior.....	\$3,295.00
Ceremonial Casket	Oak Wood Finish, Cardboard Insert, Crepe Interior.....	\$2,215.00
Bayview Beech	Light Wood Composite, Ivory Crepe Interior.....	\$1,695.00
Grey Doeskin	Cloth Covered Cardboard, Ivory Crepe Interior.....	\$1,445.00

Alternative Containers*

Trayview 27	Cardboard Teakwood Finish, Crepe Interior.....	\$985.00
Standard Brown	Hardboard Exterior, Satin Finish, Crepe Interior.....	\$525.00
Standard Cardboard	Cardboard Cremation Box, No Interior	\$275.00

**Alternative Containers are designed for cremation and do not have hardwood or handles that provide extra stability for handling. As such, alternative containers may not be suitable for extensive handling or transportation or off-site services.*

Shipping Containers

Air Tray (AAIRTRAY).....	\$300.00
Shipping container to enclose casket for transfer by common carrier	
Combination Unit (ASHPCTNR).....	\$400.00
Shipping container to enclose body of the deceased without a Casket for transfer by common carrier	
Ziegler Case (AZIEGLER).....	\$1,195.00
Metal leak proof shipping container. This container can be required by the airlines in certain instances, such as when shipping a deceased who is not embalmed	

Things to Remember

Below is a list of items that may have to be taken care of after a death has occurred. It is designed as a guide of the things that may need attention. This list is not a substitute for professional help from bankers, stockbrokers, attorneys, financial advisors, etc. Whenever possible, get the assistance of a professional.

Obituary	Bank
Minister Name	Settling of Life Insurance
Pall Bearer Names	Stocks, Bonds, Mutual Funds
Service Programs	Union Benefits or Pension Plans
Information	Mortgage Insurance
Insurance Papers	Credit Cards or Insured Loans
Notify your Attorney	Income Taxes

Social Security Benefits- Spouse and/or Dependent Children may be eligible for Survivor's Benefits. (888) 318-9114, call for an appointment. National Helpline (800) 772-1213.

Veteran's Administration- Any Veteran who was collecting Disability or a Pension, or who died in a VA facility, or had VA life Insurance may be eligible for benefits from the VA. If you are not sure if benefits are due, call the VA office. There is a local office that is managed by Lee County known as Lee County Veteran's Services and is located at: 3033 Winkler Ave., Fort Myers, FL 33916 – (239) 939-3939. Please call for an appointment! Otherwise, you can call the VA Regional office in St. Petersburg, FL at (800) 827-1000.

NOTES:

The entire staff of South Park Funeral Home Funeral Home and Cemetery would like to thank for entrusting us to handle the arrangements of your loved one. We hope we eased your mind and provided you with the Service and Respect you deserve from a funeral home. The funeral home can be a valuable resource of information now or any time in the future. If we can be of any assistance to you, help you with any paperwork, answer any questions or if you just need someone to talk to, please give us a call or stop in to see us.

Notes

Notes

Notes



1310 North Main Street + Pearland, TX + 77581
(281) 509-9228
www.southparkfunerals.com