

## GENERAL PRICE LIST

Effective FEBRUARY 12, 2024

**Skylawn Funeral Home**  
**Route 35 @ Highway 92**  
**San Mateo, California**  
**94402**  
**650.349.4411**  
**FD1848**



Prior to drafting any contract for goods or services the responsible party or the decedent's survivor who is handling the funeral arrangements is entitled to receive a copy of any pre-need arrangement in possession of the funeral establishment that has been signed and paid for, in full or in part, by or on behalf of the decedent.

It is the policy of this firm that professional fees are paid in full, twenty-four hours prior to services being rendered. For your convenience we accept checks or major credit cards.

**Business hours: Monday thru Sunday 8:30 am—5:00 pm**

For more information on funeral, cemetery and cremation:

Department of Consumer Affairs

Cemetery and Funeral Bureau

1625 North Market Street, Suite S-208

Sacramento, CA 95834

Phone 916.574.7870



# WELCOME LETTER

## CARE, COMFORT, AND PLAN

It is a simple fact of life — at some point most of us will be tasked with making plans to mark a beloved friend or family member's passing. While this process can be emotional and sometimes confusing, it is also a great responsibility and honor to decide how your loved one will be memorialized and laid to rest. It is our belief, one we hope you share, that there are few places more serene to spend eternity than within the sacred spaces and natural beauty of Skylawn Funeral Home and Memorial Park.

Not only are our facilities unparalleled, Skylawn has more than 60 years experience caring for the deceased and the families that mourn them. Our attentive staff can help you plan and host a memorial, custom or traditional, as requested to properly honor your loved one. No idea is too out of the box, nor detail too insignificant. And questions? There is truly nothing we haven't been asked before.

We hope you'll take full advantage of our services and support throughout this difficult experience. We are here to serve as partners in tackling both the uncomfortable decisions and the creative ones, and we promise to do so on your terms and always with your budget in mind.

Families seek out Skylawn because they know we are leaders in our profession, and that our concern for them is just as substantial as our concern for their deceased loved ones. We welcome you warmly and look forward to serving you with the integrity and sincerity you deserve at the time you need it most.

Kindest regards,

The Skylawn Funeral Team



**GATHERING TOGETHER. SHARING MEMORIES. HONORING A LIFE.**  
**THESE ARE THE CORNERSTONES OF HEALING AFTER A LOSS.**





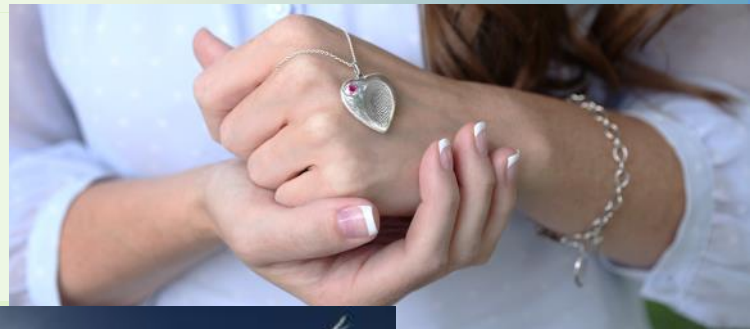
# *Signature Services*

These are just some of the many Signature Services Skylawn has to offer. Please view page 17 for a full list.

## **Memorial Portrait**



## **Legacy Touch Pendant**



## **Going Home Dove Release**



## **Memories Keepsake Box**

## **Coffee & Tea Service**



# TABLE OF CONTENTS

## TABLE OF CONTENTS

### OVERVIEW

SKYLAWN SIGNATURE SERVICES	
A WORD ABOUT BURIAL PACKAGE SELECTIONS	2
BURIAL PACKAGES	3-8
A WORD ABOUT CREMATION PACKAGE SELECTIONS	9
CREMATION PACKAGES	10-12
PROFESSIONAL SERVICES	13-15
OTHER GOODS & SERVICES	16-18
CASKET PRICE LIST	19-23

### BURIAL PACKAGE SELECTIONS

A WORD ABOUT BURIAL PACKAGE SELECTIONS	2
PACIFIC IMPERIAL BURIAL PACKAGE	3
BESPOKE BURIAL PACKAGE	4
PREMIUM BURIAL PACKAGE	5
STANDARD BURIAL PACKAGE	6
BASIC BURIAL PACKAGE	7
SIMPLICITY BURIAL PACKAGE	8

### CREMATION PACKAGE SELECTIONS

A WORD ABOUT CREMATION PACKAGE SELECTIONS	9
SIMPLE CEREMONIAL CREMATION	10
SIMPLE MEMORIAL CREMATION	11
NON-CEREMONIAL CREMATION	12
PROFESSIONAL SERVICES	13 - 15
OTHER GOODS & SERVICES	16 - 18

### CASKET PRICE LIST

ADULT CASKET SELECTION	20 - 21
CREMATION/CEREMONIAL CASKET/ALTERNATIVE	22
CONTAINER SELECTION	
CHILDREN'S CASKET SELECTION	23
HISTORY	24

## A WORD ABOUT BURIAL PACKAGE SELECTIONS

The goods and services shown below are those we can provide to our customers. You may choose only the items you desire. However, any funeral arrangements you select will include a charge for our basic services and overhead. If legal or other requirements mean you must buy items you did not specifically ask for, we will explain the reason in writing on the statement we provide describing the funeral goods and services selected.

Our package selections are designed to simplify the arrangement process, to assure the family that all desired services will be provided without additional cost and to offer a significant monetary savings compared to the itemized portion of the General Price List. Although services may be selected from the itemized portion of the General Price List, the following list of commonly selected package services may help you select the appropriate arrangements. The following packages include only the items listed in the package. Additional merchandise, sales tax, cash advance items, and fees for Saturday, Sunday, evening, and holiday services are additional unless designated. The non-use of goods and services contained within any of the package selections will not result in the reduction in the package price of the package selected. Package prices are only available when the casket or alternative container is purchased from Skylawn Funeral Home.



# BURIAL PACKAGE SELECTIONS



## PROFESSIONAL SERVICES

Basic Service of Funeral Director and Staff	\$3,150
Local Transfer of Remains to Funeral Home	\$650
Embalming, Dressing, Casketing, and Cosmetology	\$1,205, \$330, \$170
Online Obituary - Skylawn Website	Complimentary

## FACILITIES & EQUIPMENT

Use of Facility for Ceremony	\$1,000
Use of Facility for Viewing/Visitation	\$535
Use of Funeral Coach	\$400
Use of Sprinter Van - Seats 10	\$660
Service Utility Vehicle	\$220
Vista Reception Room	\$900
Flower Allowance	\$1,000

## SIGNATURE SERVICES

Five Signature Services	\$1,500
-------------------------	---------

## CASKET SELECTION

Z64 899 IDH Venetian Bronze	\$22,215
710 President Full Top Mahogany	

Total	\$33,935
<b>Package Discount</b>	<b>\$2,950</b>
<b>Price</b>	<b>\$30,985</b>

**Safely Home Travel Protection** **\$495**

**Price with Safely Home Travel Protection** **\$31,480**

Additional Signature Services may be added to any package and similar merchandise may be upgraded for the difference in the cost of the items. No substitutions or refunds on any items. Safely Home Protection is the only declinable item and is applicable to Prearrangements only. Total price does not include sales tax, permits required by regulation, or cash advances. Chapel reservations up to 2 hours. Skylawn preferred florist must be used for flower allowance.

## PROFESSIONAL SERVICES

Basic Service of Funeral Director and Staff	\$3,150
Local Transfer of Remains to Funeral Home	\$650
Embalming, Dressing, Casketing, and Cosmetology	\$1,205, \$330, \$170
Online Obituary - Skylawn Website	Complimentary

## FACILITIES & EQUIPMENT

Use of Facility for Ceremony	\$1,000
Use of Facility for Viewing/Visitation	\$535
Use of Funeral Coach	\$400
Use of Sprinter Van	\$660
Service Utility Vehicle	\$220
Vista Reception Room	\$900
Flower Allowance	\$850

## SIGNATURE SERVICES

Four Signature Services	\$1,200
-------------------------	---------

## CASKET SELECTION

8PM 899 IHD Premier Mahogany	
8X5 833 HD Imperial Mahogany	

Total	\$27,930
Package Discount	\$2,650
<b>Price</b>	<b>\$25,280</b>

**Safely Home Travel Protection** **\$495**

**Price with Safely Home Travel Protection** **\$25,775**

Additional Signature Services may be added to any package and similar merchandise may be upgraded for the difference in the cost of the items. No substitutions or refunds on any items. Safely Home Protection is the only declinable item and is applicable to Prearrangements only. Total price does not include sales tax, permits required by regulation, or cash advances. Chapel reservations up to 2 hours. Skylawn preferred florist must be used for flower allowance.

BESPOKE BURIAL PACKAGE



# PREMIUM BURIAL PACKAGE

## PROFESSIONAL SERVICES

Basic Service of Funeral Director and Staff	\$3,150
Local Transfer of Remains to Funeral Home	\$650
Embalming, Dressing, Casketing, and Cosmetology	\$1,205, \$330, \$170
Online Obituary - Skylawn Website	Complimentary

## FACILITIES & EQUIPMENT

Use of Facility for Ceremony	\$1,000
Use of Facility for Viewing/Visitation	\$535
Use of Funeral Coach	\$400
Service Utility Vehicle	\$220
Flower Allowance	\$750

## SIGNATURE SERVICES

Three Signature Services	\$900
--------------------------	-------

## CASKET SELECTION

U46 844 NDH Tapestry Rose Stainless Steel	\$11,330
Y39 884 IDH Aegean Copper	
7V3 828 HD Pearson Cherry	

Total	\$20,640
-------	----------

<b>Package Discount</b>	<b>\$1,700</b>
-------------------------	----------------

<b>Price</b>	<b>\$18,940</b>
--------------	-----------------

<b>Safely Home Travel Protection</b>	<b>\$495</b>
--------------------------------------	--------------

<b>Price with Safely Home Travel Protection</b>	<b>\$19,435</b>
---	-----------------

Additional Signature Services may be added to any package and similar merchandise may be upgraded for the difference in the cost of the items. No substitutions or refunds on any items. Safely Home Protection is the only declinable item and is applicable to Prearrangements only. Total price does not include sales tax, permits required by regulation, or cash advances. Chapel reservations up to 2 hours. Skylawn preferred florist must be used for flower allowance.



## PROFESSIONAL SERVICES

Basic Service of Funeral Director and Staff	\$3,150
Local Transfer of Remains to Funeral Home	\$650
Embalming, Dressing, Casketing, and Cosmetology	\$1,205, \$330, \$170
Online Obituary - Skylawn Website	Complimentary

## FACILITIES & EQUIPMENT

Use of Facility for Ceremony	\$1,000
Use of Facility for Viewing/Visitation	\$535
Use of Funeral Coach	\$400
Service Utility Vehicle	\$220
Flower Allowance	\$650

## SIGNATURE SERVICES

Two Signature Services	\$600
------------------------	-------

## CASKET SELECTION

N01 8BG H Midnight Gold	\$7,775
2V1 880 HD Woodhaven Pecan	
U04 872 DH Blue Mist	
7NC 828 HD Embassy Cherry	

Total	\$16,685
Package Discount	\$1,400
Price	\$15,285

**Safely Home Travel Protection** \$495

**Price with Safely Home Travel Protection** \$15,780

Additional Signature Services may be added to any package and similar merchandise may be upgraded for the difference in the cost of the items. No substitutions or refunds on any items. Safely Home Protection is the only declinable item and is applicable to Prearrangements only. Total price does not include sales tax, permits required by regulation, or cash advances. Chapel reservations up to 2 hours. Skylawn preferred florist must be used for flower allowance.

STANDARD BURIAL PACKAGE

# BASIC BURIAL PACKAGE

## PROFESSIONAL SERVICES

Basic Service of Funeral Director and Staff	\$3,150
Local Transfer of Remains to Funeral Home	\$650
Embalming, Dressing, Casketing, and Cosmetology	\$1,205, \$330, \$170
Online Obituary - Skylawn Website	Complimentary

## FACILITIES & EQUIPMENT

Use of Facility for Ceremony	\$1,000
Use of Facility for Same Day Viewing/Visitation	\$535
Use of Funeral Coach	\$400
Service Utility Vehicle	\$220
Flower Allowance	\$400

## SIGNATURE SERVICES

One Signature Service	\$300
-----------------------	-------

## CASKET SELECTION \$4,450

4G1 H HW Unfinished 041M Narh

L98 847 A Emeraldtone

Q02 805 A Earthtone

Total	\$12,810
-------	----------

<b>Package Discount</b>	<b>\$1,100</b>
-------------------------	----------------

<b>Price</b>	<b>\$11,710</b>
--------------	-----------------

<b>Safely Home Travel Protection</b>	<b>\$495</b>
--------------------------------------	--------------

<b>Price with Safely Home Travel Protection</b>	<b>\$12,205</b>
---	-----------------

Additional Signature Services may be added to any package and similar merchandise may be upgraded for the difference in the cost of the items. No substitutions or refunds on any items. Safely Home Protection is the only declinable item and is applicable to Prearrangements only. Total price does not include sales tax, permits required by regulation, or cash advances. Chapel reservations up to 2 hours. Skylawn preferred florist must be used for flower allowance.

## PROFESSIONAL SERVICES

Basic Service of Funeral Director and Staff	\$3,150
Local Transfer of Remains to Funeral Home	\$650
Sanitary Care & Dressing of Un-Embalmed Remains	\$440
Online Obituary - Skylawn Website	Complimentary

## FACILITIES & EQUIPMENT

Use of Facility for Ceremony	\$1,000
Private Family Viewing	\$390
Use of Funeral Coach	\$400
Use of Service Vehicle	\$220

## CASKET SELECTION

CM2 8N1 A Spectra Blue	\$2,500
CM2 8N1 A Spectra Silver	
CM2 8N1 A Spectra White	
4C1 8J5 UDH Delray	

Total	\$8,750
Package Discount	\$800
<b>Price</b>	<b>\$7,950</b>

**Safely Home Travel Protection** **\$495**

**Price with Safely Home Travel Protection** **\$8,445**

Additional Signature Services may be added to any package and similar merchandise may be upgraded for the difference in the cost of the items. No substitutions or refunds on any items. Safely Home Protection is the only declinable item and is applicable to Prearrangements only. Total price does not include sales tax, permits required by regulation, or cash advances. Chapel reservations up to 2 hours.

SIMPLICITY BURIAL PACKAGE



# CREMATION PACKAGE SELECTIONS

## A WORD ABOUT CREMATION PACKAGE SELECTIONS

One of the most respectful ways to honor a loved one's passing is through ceremony - the rites and traditions that can make a difficult time feel a bit more comforting. At Skylawn we assist our clients by handling the professional preparation of remains as well as gathering of friends and family and can work with you to create a memorial suited to any style, size or budget.

Our package selections are designed to simplify the arrangement process, to assure the family that all desired services will be provided without additional cost and to offer a significant monetary savings compared to the itemized portion of the General Price List. Although services may be selected from the itemized portion of the General Price List, the following list of commonly selected package services may help you select the appropriate arrangements. The following packages include only the items listed in the package. Additional merchandise, sales tax, cash advance items, and fees for Saturday, Sunday, evening, and holiday services are additional unless designated. The non-use of goods and services contained within any of the package selections will not result in the reduction in the package price of package selected. Package prices are only available when the casket or alternative container is purchased from Skylawn Funeral Home.



## PROFESSIONAL SERVICES

Basic Service of Funeral Director and Staff	\$3,150
Local Transfer of Remains to Funeral Home	\$650
Embalming, Dressing, Casketing, and Cosmetology	\$1,205, \$330, \$170
Online Obituary - Skylawn Website	Complimentary

## FACILITIES & EQUIPMENT

Use of Facility for Ceremony	\$1,000
Use of Facility for Viewing/Visitation	\$535
Use of Funeral Coach	\$400
Skylawn Memorial Park Cremation M - F	\$495

### PREMIUM CASKET SELECTION

Dryden	\$4,660
Urn Allowance	\$550
Flower Allowance	\$550
Use of Reception Room	\$900
Three Signature Services	\$900
Total	\$15,495
<b>Package Discount</b>	<b>\$2,350</b>

**Price**

**\$13,145**

### STANDARD CASKET SELECTION

Lyra Brown	\$3,325
Urn Allowance	\$450
Flower Allowance	\$450
Two Signature Services	\$600
Total	\$12,760
<b>Package Discount</b>	<b>\$2,050</b>

**Price**

**\$10,710**

### BASIC CASKET SELECTION

Ceremonial Oak/Cherry	\$2,210
Urn Allowance	\$350
Flower Allowance	\$350
One Signature Service	\$300
Total	\$11,145
<b>Package Discount</b>	<b>\$1,750</b>

**Price**

**\$9,395**

**Safely Home Travel Protection**

**\$495**

**Price with Safely Home Travel Protection**

**Premium: \$13,640**

**Standard: \$11,205**

**Basic: \$9,890**

Additional Signature Services may be added to any package and similar merchandise may be upgraded for the difference in the cost of the items. No substitutions or refunds on any items. Safely Home Protection is the only declinable item and is applicable to Pre-arrangements only. Total price does not include sales tax, permits required by regulation, or cash advances. Chapel reservations up to 2 hours. Skylawn preferred florist must be used for flower allowance.

SIMPLE CEREMONIAL CREMATION



**PROFESSIONAL SERVICES**

Basic Service of Funeral Director and Staff	\$3,150
Local Transfer of Remains to Funeral Home	\$650
Sanitary Care & Dressing Un-Embalmed Remains	\$440
Online Obituary - Skylawn Website	Complimentary

**FACILITIES & EQUIPMENT**

Use of Facility for Ceremony	\$1,000
Use of Facility for Private Family Viewing	\$390
Skylawn Memorial Park Cremation M - F	\$495

**PREMIUM CASKET SELECTION**

Bayview Beech	\$2,690
Urn Allowance	\$550
Flower Allowance	\$450
Use of Reception Room	\$900
Three Signature Services	\$900
Total	\$11,615
<b>Package Discount</b>	<b>\$2,150</b>

**Price****\$9,465****STANDARD CASKET SELECTION**

Novato	\$1,625
Urn Allowance	\$450
Flower Allowance	\$350
Two Signature Services	\$600
Total	\$9,150
<b>Package Discount</b>	<b>\$1,850</b>

**Price****\$7,300****BASIC CASKET SELECTION**

Starmark Vista	\$670
Urn Allowance	\$350
Flower Allowance	\$250
One Signature Service	\$300
Total	\$7,695
<b>Package Discount</b>	<b>\$1,550</b>

**Price****\$6,145****Safely Home Travel Protection****\$495****Price with Safely Home Travel Protection****Premium: \$9,960****Standard: \$7,795****Basic: \$6,640**

Additional Signature Services may be added to any package and similar merchandise may be upgraded for the difference in the cost of the items. No substitutions or refunds on any items. Safely Home Protection is the only declinable item and is applicable to Prearrangements only. Total price does not include sales tax, permits required by regulation, or cash advances. Chapel reservations up to 2 hours. Skylawn preferred florist must be used for flower allowance.



## PROFESSIONAL SERVICES

Basic Service of Funeral Director and Staff	\$3,150
Local Transfer of Remains to Funeral Home	\$650
Sanitary Care & Dressing Un-Embalmed Remains	\$440
Online Obituary - Skylawn Website	Complimentary

## FACILITIES & EQUIPMENT

Use of Facility for Private Family Viewing	\$390
Skylawn Memorial Park Cremation M - F	\$495

### PREMIUM CASKET SELECTION

Starmark Carrollton	\$1,100
Urn Allowance	\$550
Total	\$6,775
<b>Package Discount</b>	<b>\$1,450</b>

**Price** **\$5,325**

### STANDARD CASKET SELECTION BASIC CASKET SELECTION

Starmark Vista	\$670	CB1	\$110
Urn Allowance	\$450	Urn Allowance	\$350
Total	\$6,245	Total	\$5,585
<b>Package Discount</b>	<b>\$1,450</b>	<b>Package Discount</b>	<b>\$1,450</b>

**Price** **\$4,795** **Price** **\$4,135**

**Safely Home Travel Protection** **\$495**

**Price with Safely Home Travel Protection**

**Premium: \$5,820** **Standard: \$5,290** **Basic: \$4,630**

Additional Signature Services may be added to any package and similar merchandise may be upgraded for the difference in the cost of the items. No substitutions or refunds on any items. Safely Home Protection is the only declinable item and is applicable to Prearrangements only. Total price does not include sales tax, permits required by regulation, or cash advances.

NON-CEREMONIAL CREMATION

## PROFESSIONAL SERVICES

The goods and services shown below are those we can provide to our customers. You may choose only the items you desire. However, any funeral arrangements you select will include a charge for our basic services and overhead. If legal or other requirements mean you must buy items you did not specifically ask for, we will explain the reason in writing on the statement we provide describing the funeral goods and services selected.

### BASIC SERVICE OF FUNERAL DIRECTOR AND STAFF

**\$3,150**

Our basic services charge includes the service of our funeral directors and staff for initial service request; arrangement conference with the family or responsible party; arrangement of a meaningful and appropriate funeral or memorial ceremony; preparation and filing of necessary authorizations and permits; recording vital statistics; preparation and placement of obituary notices; coordinating service plans with cemetery, crematory; receiving and arranging flowers; invitation to our annual services of remembrance; aftercare services; and customary sheltering of deceased. Included in this charge are our overhead, maintenance and utility expenses, equipment, and inventory expenses. This fee for our basic services and overhead will be added to the total cost of the funeral arrangements you select. This fee is already included in our charge for direct cremations, immediate burials and forwarding or receiving remains.

### EMBALMING

**\$1,205**

Except in certain cases, embalming is not required by law. Embalming may be necessary however if you select certain funeral arrangements, such as a funeral with a viewing. If you do not want embalming, you usually have the right to choose an arrangement that does not require you to pay for it, such as a direct cremation or immediate burial. Instances where embalming is required may be such as where the remains are to be transferred out of state or out of the country. Skylawn Funeral Home requires embalming if a family chooses to hold an open casket visitation and/or open casket services.

### ENVIRONMENTALLY FRIENDLY EMBALMING

**\$1,000**

Except in certain cases, embalming is not required by law. Embalming may be necessary however if you select certain funeral arrangements, such as a funeral with a viewing. If you do not want embalming, you usually have the right to choose an arrangement that does not require you to pay for it, such as a direct cremation or immediate burial. Instances where embalming is required may be such as where the remains are to be transferred out of state or out of the country. Skylawn Funeral Home requires embalming if a family chooses to hold an open casket visitation and/or open casket services. Formulations used in this embalming process uphold the application of only earth friendly constituents.

## OTHER PREPARATION OF THE DECEASED

Dressing and/or Casketing of Embalmed Remains	\$330
Cosmetology and Hairdressing of Embalmed Remains (by staff)	\$170
Sanitary Care, Dressing, and Casketing of Un-Embalmed Remains	\$440
Refrigeration Per Day After 4th Day of Use	\$55
Preparation Room - Clinical/Ritual Use up to 3 hours	\$885
Autopsy/Trauma/Bone & Tissue Donor Repair - up to 2 hours	\$275

## USE OF FACILITIES AND STAFF—Monday thru Friday

Use of Facility for Viewing/Visitation - up to 4 hours	\$535
Use of Facility for Same Day Viewing/Visitation - up to 2 hours prior to service	\$535
Funeral Ceremony in Funeral Home Chapel or Viewing Room - up to 2 hours	\$1,000
Memorial Service in Funeral Home Chapel or Viewing Room - up to 2 hours	\$1,000
Additional Charge for Evening Service per hour after 5:00pm until 9:00pm	\$110
Use of Facility for Private Family Viewing - up to 30 minutes/8 people	\$390
Use of Vista Reception Room - up to 3 hours	\$900
<b>Additional Charge for Saturday, Sunday, or Holiday Service</b>	<b>\$550</b>

## USE OF EQUIPMENT AND STAFF—Monday thru Friday

Service at Final Urn Placement (Niche/Graveside/Cryptside)	\$535
Graveside Service or Crematory Service	\$1,000
Funeral Ceremony in Church or Other Outside Facility	\$1,000
Memorial Service in Church or Other Outside Facility	\$1,000
Overnight Use of Facility and Staff	\$1,975

## TRANSFER OF REMAINS TO FUNERAL HOME

Local - within 30 miles	\$650
*Additional fee of \$6.00 per mile over 30 miles	

## TRANSPORTATION

Funeral Coach/Hearse	\$400
*Additional fee of \$6.00 per mile over 30 miles	
Sprinter Van -10 passenger, up to 3 hours within 30 miles radius	\$660
*Additional fee of \$6.00 per mile over 30 miles	
Service Utility Vehicle - within 30 miles	\$220
*Additional fee of \$6.00 per mile over 30 miles	



## **FORWARDING REMAINS TO ANOTHER FUNERAL HOME** \$4,320

This charge includes Basic Service of Funeral Director and Staff, embalming (if required), transportation of remains to funeral home, transportation to or from local airport or other place of shipment within 30 mile radius, and obtaining necessary permits and authorizations. This charge does not include visitation, ceremonies, airfare, air tray, or casket/shipping container. This charge applies to shipment within the continental U.S. only. Skylawn Funeral Home can also assist with international destinations. Please inquire with staff for further information.

## **RECEIVING REMAINS FROM ANOTHER FUNERAL HOME** \$3,265

This charge includes Basic Service of Funeral Director and Staff, transportation of remains to cemetery or crematory, transportation to or from local airport or other place of shipment within 30 mile radius, and obtaining necessary permits and authorizations. This charge does not include visitation or ceremonies.

## **DIRECT CREMATION**

If you want to arrange a direct cremation, you can use an alternative container. Alternative containers encase the body and can be made of materials like fiberboard or composition materials (with or without outside covering). The containers we provide are alternative containers and other cremation containers, including containers made of wood, fiberboard, and composite materials.

Our charges for direct cremation (without ceremony) include the following:

Basic Service of Funeral Director and Staff, local transfer of remains to funeral home, securing necessary permits, other preparation and care of body, refrigeration - up to four days, and Skylawn Memorial Park cremation fee.

1. Direct cremation with container provided by the purchaser. All such containers must meet any applicable state or crematory requirements. \$3,400
2. Direct cremation with casket from our facility, in addition to cost of casket. \$3,400  
\*See Casket Price List for casket prices.
3. Direct cremation with heavy cardboard container - CB1 - no interior. \$3,510
4. Direct cremation with cremation on Skylawn Memorial Park contract \$3,015

## **IMMEDIATE BURIAL**

Our charges for immediate burial include (without ceremony) the following:

Basic Service of Funeral Director and Staff, local transfer of remains to funeral home securing necessary permits, other preparation and care of body, refrigeration. This charge does not include casket, visitation, rites or ceremonies prior to transfer of the body.

1. Immediate burial with container provided by the purchaser. All such containers must meet any applicable state or cemetery requirement \$3,450
2. Immediate burial with casket selected from our facility, in addition to cost of casket.  
\*See Casket Price List for casket prices. \$3,450
3. Immediate burial with minimum casket from our facility - Apollo Silver. \$5,115

## OTHER GOODS AND SERVICES

### CASKETS: A complete Casket Price List will be provided at the funeral home

Adult Casket Price Range: \$1,665 - \$29,915

Cremation Casket Price Range: \$1,560- \$4,660

Ceremonial (Rental) Casket: \$2,210

### ALTERNATIVE CONTAINERS: A complete Casket Price List will be provided at the funeral home

Alternative Container Price Range: \$110 - \$1,625

### URNS: Pricing will be provided at the funeral home

Urn Price Range: \$350 - \$6,900

### BURIAL CLOTHING

Suits and Dresses \$300 - \$1,200

Shrouds Linen Male and Female \$300

Traditional Asian Clothing \$200 - \$900

### CHILDREN'S GENERAL PRICE LIST

Children's Casket Price Range: \$400 - \$3,050

Direct Cremation or Immediate Burial Fetal Remains \* \$500

Direct Cremation or Immediate Burial Infant (up to one year of age) \* \$600

Burial or Cremation: Child 0 - 4 years of age \* 75% off GPL

Child 5 - 10 years of age \* 50% off GPL

Child 11 - 18 years of age \* 25% off GPL

\*Pricing is for services only. Cremations include a simple cardboard cremation container and plastic temporary urn. Cash Advance Items and Additional Merchandise will not be discounted.

### Safely Home Protection

**\$495**

Your Safely Home Protection plan provides the following benefits:

- Worldwide coverage – your plan covers you whether you're travelling across the state or across the ocean.
- Highest service standards – we'll work closely with local and international transportation providers to ensure our high level of care is provided throughout the process.
- Protection from unexpected costs – if a claim occurs out of state or out of the country, you can rest assured that charges related to transfer to your contracted funeral home are covered up to \$10,000.
- 24-hour service – our care specialists are available by phone 24 hours a day, 7 days a week, 365 days a year.
- No endless premiums – the Safely Home Protection plan provides ongoing protection, a fixed fee, payable in one lump sum or 12 easy monthly payments.

Ask your Family Service Advisor for more details.

## **SIGNATURE SERVICES**

### **FIRST TIER OPTIONS**

**\$300**

Custom DVD (up to 50 Photos)

Victory Flag Case

Catholic Traditions Package

Jewish Traditions Package

Pall Bearer Package

Coffee & Tea Service

Memorial Stationary Package: Basic (100 Service Folders, Standard Guest Book, 75 Acknowledgement Cards)

Memory Blanket

### **SECOND TIER OPTIONS**

**\$600**

Framed Memorial Portrait on Canvas

Thumbprint Pendant

Cherry Wood Memory Box

Skylawn Memorial Park Witness Cremation (M - F, 9:00am-3:00pm)

Asian Burning Package: Basic (One Bundle Passover Money, One Bundle Gold/Silver, Two Bundles American Money, One Bundle Large Paper, One Bundle Incense, One Bundle Kai Chin, One Passport to Burn, One Passport for Hands)

Chinese Blankets (7 Blankets)

Memorial Stationary Package: Standard (100 Service Folders, Deluxe Guest Book, 75 Acknowledgement Cards, 100 Prayer Cards)

### **THIRD TIER OPTIONS**

**\$900**

Bag Piper

Harpist

Vocalist

Dove Release - 12 Doves

Skylawn Memorial Park Witness Cremation (Saturday or Sunday/Holiday 9:00am to 3:00pm)

Memorial Stationary Package: Premium (200 Service Folders, Deluxe Guest Book, 150 Acknowledgement Cards, 100 Prayer Cards)

### **FOURTH TIER OPTIONS**

**\$1,200**

Asian Burning Package: Deluxe (One House, Two Servants, One Car with Driver, One Joss Stick, One Bundle Passover Money, One Bundle Gold/Silver, Two Bundles American Money, One Bundle Large Paper, One Bundle Incense, One Bundle Kai Chin, One Passport to Burn, One Passport for Hands, One Large Red Envelope, One Small Red/White Envelope)

### **FIFTH TIER OPTIONS**

**\$1,500**

Parting Stone (includes shipping of cremated remains to Parting Stone Lab)



Videographer - up to 2 hours



**MISCELLANEOUS GOODS**

Service Folders (100)	\$225
Acknowledgement Cards (75)	\$165
Prayer Cards (100)	\$175
Guest Book: Basic	\$75
Guest Book: Deluxe	\$200
Pall Bearer Gloves (6 pairs)	\$150
Presentation Cross/Crucifix/Rosary	\$65
Memorial Jewelry	\$195 and up
Red and White Envelopes (50 of each)	\$50

**MISCELLANEOUS SERVICES**

Dis-interment Oversight by Licensed Funeral Director	\$3,650
Dis-inurnment Oversight by Licensed Funeral Director	\$545
Skylawn Memorial Park Cremation - Monday through Friday	\$495
Skylawn Memorial Park Cremation - Saturday and Sunday/Holiday	*\$600
<i>*In addition to Cremation Fee if performed on Saturday, Sunday, or Holiday</i>	
Skylawn Memorial Park Witness Cremation - Mon through Fri (9am-3pm)	\$600
Skylawn Memorial Park Witness Cremation - Sat and Sun (9am-3pm)/Holiday	\$900
Cremation Rush Service - 24 hour turn around	\$550
Relic Collection @ Skylawn Crematory - up to 2 hours	\$600
Cremation Processing Fee	\$295
Department of Consumer Affairs Fee	\$11.50
Foreign Consulate Document Processing	\$500 and up
Notary Fee	\$35 and up
Signature Services	\$300 - \$1,500
Document Mailing Fee	\$85
Mailing Cremated Remains (this is not a postage fee)	\$225
Mailing Keepsakes (this is not a postage fee)	\$220
Reception Room Set-Up/Clean-Up (when non preferred caterer is used)	\$1,425
Catering Services	As Quoted
Urn Engraving (Up to 25 letters)	\$695
After 25 Letters, per letter	\$10
Ethnic Character (per character)	\$100
Skylawn Funeral Home Weekend Fee	\$550
After Hours Transfer of Remains - Additional (between 5pm and 8am)	\$220
Two Person Transfer of Remains - Additional	\$200
Scheduled Cremation - Additional	\$350

**CASKET PRICE LIST**  
**Effective FEBRUARY 12, 2024**

**Skylawn Funeral Home**  
**Route 35 @ Highway 92**  
**San Mateo, California**  
**94402**  
**650.349.4411**  
**FD1848**



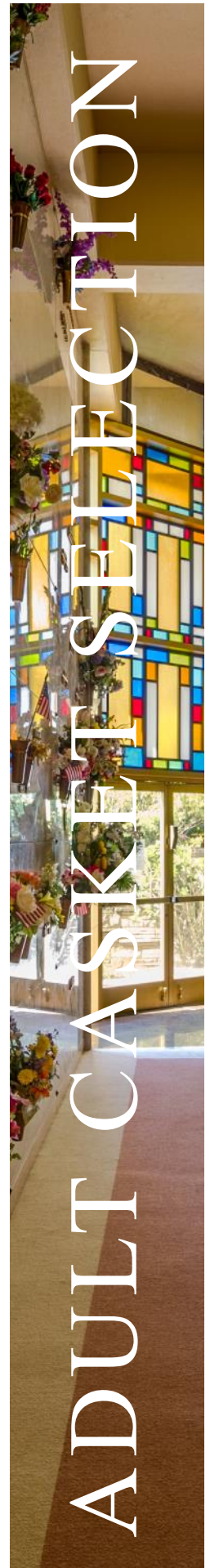
Adult Casket Range:	\$1,665 to \$29,915
Cremation Casket Range:	\$1,560 to \$4,660
Alternative Container Range:	\$110 to \$1,625
Children's Casket Range:	\$400 to \$3,050

**Disclaimer of Warranties**

Skylawn Funeral Home makes no representations or warranties about the protective value of the caskets listed herein other than those expressly extended by manufacturers. The only warranties, expressed or implied, granted in connection with caskets sold are the express written warranties, if any extended by the manufacturer thereof. Skylawn Funeral Home hereby expressly disclaims all warranties, expressed or implied relating to the caskets, including, but not limited to the implied warranties of merchantability and fitness for a particular purpose.

**THERE IS NO EVIDENCE THAT ANY CASKET REPRESENTED AS HAVING PROTECTIVE FEATURES, WHICH MAY INCLUDE A GASKET, WILL PRESERVE HUMAN REMAINS. .**

8SS 815 LH MONTRACHET MAHOGANY SOLID MAHOGANY, CHAMPAGNE VELVET 148243	20.88x82.9x29	\$29,915
Z64 824 DH CLASSIC GOLD 48OZ BRONZE, CHAMPAGNE VELVET 147959	24x84x29	\$25,550
710 PRESIDENT FULL TOP SOLID MAHOGANY—DARK, SILVERBEIGE VELVET, WOOD BED 209436	22.5x81x28	\$22,215
Z64 899 IDH VENETIAN BRONZE 48OZ. BRONZE, GASKETED, CHAMPAGNE VELVET 147961	24x84x29	\$22,215
8PM 699 IHD PREMIER FULL TOP SOLID MAHOGANY, CHAMPAGNE VELVET, WOOD BED 148244	23x84.25x29	\$18,880
8PM 899 IHD PREMIER MAHOGANY SOLID MAHOGANY, CHAMPAGNE VELVET 148245	23x84.25x29	\$16,660
8X5 833 HD IMPERIAL MAHOGANY SOLID MAHOGANY, CHAMPAGNE VELVET 148247	23x83x28	\$16,660
U46 844 TAPESTRY ROSE BASIC STAINLESS STEEL, GASKETED MOSS PINK VELVET 147901	23.5x83.5x28.5	\$11,330
Y39 884 AEGEAN COPPER 32 OZ. COPPER, GASKETED CHAMPAGNE VELVET 147935	23.5x83.5x28.5	\$11,330
PEARSON CHERRY CHERRY VENEER DARK, CHAMPAGNE VELVET 202512	23x81.5x25.5	\$11,330
UG1 828 CDH SILVER SAPPHIRE BASIC STAINLESS STEEL, GASKETED SILVER VELVET 185491	23.5x83.5x28.5	\$9,325
130 PROMINENCE—CUT TOP MAPLE HARDWOOD, CHAMPAGNE VELVET 244309	23.25x81.63x28.5	\$8,888
7NC 828 EMBASSY CHERRY SOLID CHERRY, CHAMPAGNE VELVET 148222	23X82.63x28.38	\$7,775
U04 872 DH BLUE MIST 18 GAUGE STEEL, GASKETED, MEDIUM WEIGHT, BLUE WITH SILVER TRIM 147903	23.5x83.5x28.5	\$7,775
2V1 880 HD WOODHAVEN PECAN PECAN VENEER MEDIUM, CHAMPAGNE VELVET 20162	23x82.5x28.5	\$7,775
N01 8BG H MIDNIGHT GOLD 18 GAUGE STEEL, GASKETED, BLACK WITH GOLD TRIM VELVET 279142	23.5x83.13x28.25	\$7,775
410 SYRACUSE—CUT TOP SELECT HARDWOOD SOLID, CHAMPAGNE VELVET 275548	23.25x81.63x28.5	\$7,120
OT9 BL7 DH IVORY 18 GAUGE STEEL, GASKETED, MEDIUM WEIGHT, IVORY VELVET 255453	23.5x83.13x28.13	\$7,110
495 825 CH BAILEY SELECT HARDWOOD VENEER, KHAKI LINWOOD 263781	23.5x82.5x28.63	\$6,665
N01 8K3 CDH MERLOT 18 GAUGE STEEL, GASKETED, MEDIUM WEIGHT, ROSETAN CREPE 239723	23.4x83.13x28.25	\$6,650
O61 8J6 HDH BURNISHED SILVER 18 GAUGE STEEL, GASKETED, MEDIUM WEIGHT, CHAMPAGNE VELVET 273553	24x84x29	\$6,650
Q42 809 A IVORY GOLD 20 GAUGE STEEL, GASKETED, IVORY CREPE 148040	23.75x83x28.25	\$5,550





# ADULT CASKET SELECTION

468 847 D LYNX LIGHT BROWN HARDWOODS AND VENEERS, ROSETAN CREPE 257923	23x81.5x28.2	\$5,550
427 880 D LIBRA HARVEST BROWN SELECT HARDWOODS AND VENEERS, ROSETAN CREPE 241727	23x81.5x28.2	\$5,429
4G1 H HW UNFINISHED 041M NARROW SELECT HARDWOOD SOLID, IVORY CREPE 148097	17x82x27.25	\$4,450
L98 847 A EMERALDTONE 20 GAUGE STEEL, NON-GASKETED, IVORY CREPE 279864	23.75x83x28.25	\$4,450
Q02 805 A EARTHTONE 20 GAUGE STEEL, NON-GASKETED, ROSETAN CREPE 148028	23.75x83x28.25	\$4,450
QD2 8F3 A PISCES WHITE 20 GAUGE STEEL, GASKETED, IVORY CREPE 257953	23.75x83x28.25	\$4,235
8N1 D ARGO ORCHID 20 GAUGE STEEL, GASKETED, MOSS PINK CREPE 278912	23.5x83.13x28.25	\$4,235
8N1 D ARGO SILVER 20 GAUGE STEEL, GASKETED, IVORY CREPE 278920	23.5x83.13x28.25	\$4,235
CM2 8N1 A SPECTRA BLUE 20 GAUGE STEEL, NON-GASKETED, LIGHT BLUE CREPE 221506	23.75x83x28.25	\$2,500
CM2 8N1 A SPECTRA SILVER 20 GAUGE STEEL, NON-GASKETED, IVORY CREPE 221507	23.75x83x28.25	\$2,500
CM2 8N1 A SPECTRA WHITE 20 GAUGE STEEL, NON-GASKETED, IVORY CREPE 223045	23.75x83x28.25	\$2,500
AC1 8J5 UDH DELRAY SELECT HARDWOOD, ROSETAN CREPE 146853	23x81.5x29.5	\$2,500
CM1 8F2 A APOLLO SILVER 20 GAUGE STEEL, NON-GASKETED, IVORY CREPE 221502	23.75x83x28.25	\$1,665

**No matter how you feel at this moment, you have our commitment—  
you're never alone.**



## **CREMATION CASKETS**

4C1 882 CDH DRYDEN BROWN SELECT HARDWOODS AND VENEERS, ROSETAN CREPE 278271	23x81.5x28.2	\$4,660
847 D LYRA BROWN SELECT HARDWOODS AND VENEERS, ROSETAN CREPE 269152	23x81.5x28.2	\$3,325
BAYVIEW BEECH WITH HANDLES WOOD COMPOSITE (MDF), IVORY CREPE 184743	17x80.25x27.38	\$2,690
HADLEY CREMATION CONTAINER WOOD COMPOSITE (MDF), IVORY CREPE 279185		\$1,560

## **CEREMONIAL/RENTAL CASKETS**

527 825 D BROCKTON 27 RENTAL OAK SOLID, ROSETAN CREPE 246588	23.38x85x31.5	\$2,210
7PM 888 H BECKHAM 27 RENTAL CHERRY SOLID, CHAMPAGNE VELVET 246589	23.38x85x31.5	\$2,210

## **ALTERNATIVE CONTAINERS**

NOVATO CREMATION CONTAINER WOOD COMPOSITE (MDF), IVORY CREPE 279183	14x81x28.22	\$1,625
GREY DOESKIN OVAL CUT TOP CLOTH COVERED FIBERBOARD, IVORY CREPE 147970	19x82x29.5	\$1,345
BADEN ALTERNATIVE CONTAINER CARDBOARD, FABRIC INTERIOR NOT AVAILABLE	15x81.5x28.75	\$1,220
STARMARK CARROLLTON MEDIUM WOOD CORRUGATED FIBERBOARD, WHITE CREPE 800642		\$1,100
STARMARK VISTA DRIFTWOOD DRIFTWOOD CORRUGATED FIBERBOARD, WHITE CREPE 800635		\$670
HEAVY CARDBOARD CB1 CORRUGATED CARDBOARD		\$110

## **SHIPPING CONTAINERS**

ZIEGLER SHIPPING CASE METAL SEALED SHIPPING CONTAINER		\$805
COMBINATION SHIPPING CONTAINER PLYWOOD AND CORRUGATED CARDBOARD		\$550
SHIPPING AIR TRAY PLYWOOD AND CORRUGATED CARDBOARD		\$330

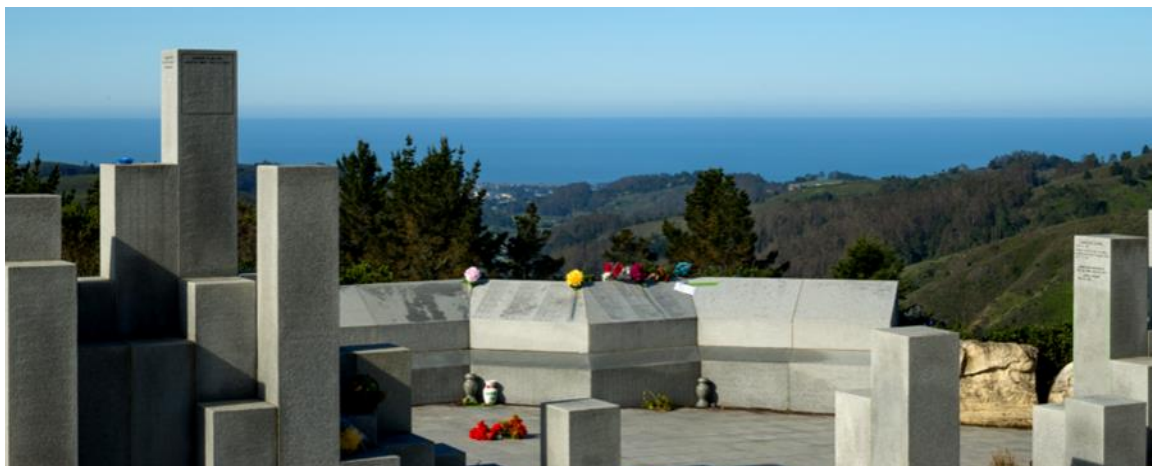
# CREMATION/CEREMONIAL/ALTERNATIVE CONTAINER SELECTION

## CHILDREN'S CASKETS

5'6" ASHLEY YOUTH 20 GAUGE STEEL, NON-GASKETED WHITE SHADED GOLD FINISH, WHITE CREPE INTERIOR 71005846	\$3,050
4'6" ASHLEY YOUTH 20 GAUGE STEEL, NON-GASKETED WHITE SHADED GOLD FINISH, WHITE CREPE INTERIOR 710005845	\$2,775
3'6" ASHLEY YOUTH 20 GAUGE STEEL, NON-GASKETED WHITE SHADED GOLD FINISH, WHITE CREPE INTERIOR 71005843	\$2,700
2'6" ASHLEY INFANT 20 GAUGE STEEL, NON-GASKETED WHITE SHADED GOLD FINISH, WHITE CREPE INTERIOR 71005841	\$2,665
5'6" ANGELIC INFANT/YOUTH FIBER BOARD CLOTH COVERED WHITE EXTERIOR, IVORY CREPE INTERIOR 70000689	\$1,430
4'6" ANGELIC INFANT/YOUTH FIBER BOARD CLOTH COVERED WHITE EXTERIOR, IVORY CREPE INTERIOR 70000695	\$1,300
3'6" ANGELIC INFANT/YOUTH FIBER BOARD CLOTH COVERED WHITE EXTERIOR, IVORY CREPE INTERIOR 70000726	\$1,200
2'6" ANGELIC INFANT/YOUTH FIBER BOARD CLOTH COVERED WHITE EXTERIOR, IVORY CREPE INTERIOR 70000725	\$700
24" ANGELIC INFANT FIBER BOARD CLOTH COVERED WHITE EXTERIOR, IVORY CREPE INTERIOR 70000724	\$600
20" ANGELIC INFANT FIBER BOARD CLOTH COVERED WHITE EXTERIOR, IVORY CREPE INTERIOR 70000723	\$400

## CASKET VAULT COMBO

MCORD MATTHEWS 29" FIBERGLASS WHITE GOLDEN FROST EXTERIOR, WHITE VELVET INTERIOR 710007041	\$1,300
31" CHRISTY WHITE EXTERIOR HARD SHELL EXTERIOR WHITE VELVET INTERIOR	\$1,135
24" CHRISTY WHITE EXTERIOR HARD SHELL EXTERIOR WHITE VELVET INTERIOR	\$875
19" CHRISTY WHITE EXTERIOR HARD SHELL EXTERIOR WHITE VELVET INTERIOR	\$475




Skylawn is perched atop the Montara mountain range on the San Francisco Peninsula between the San Francisco Bay and the Pacific Ocean. The park's 505 acres are surrounded by a nature preserve, and home to an abundance of wildlife including: deer, bobcat, racoon, skunk, fox, cougar, and many others. The unique location within the nature preserve ensures Skylawn's vast beauty will remain unspoiled for generations.

Designed by noted San Francisco landscape architects French and Jones, Skylawn Memorial Park opened October 1, 1959. Inside the park are architecturally significant structures, beautifully landscaped gardens, unobstructed views of the Bay and the Pacific, and a wealth of history. Architect Aaron Green designed the prominent Mausoleum in the Sky. Green was the West Coast representative of renowned architect Frank Lloyd Wright. Green also designed the entrance to Gan Hazikaron, a Jewish garden within Skylawn. There are also two remarkable Chinese gardens developed to the exact specifications of international Feng Shui masters. The triple gate at the top of Bai Ling Yuan II Plaza offers the perfect orientation, gazing down the canyon to the Pacific Ocean, the gates protected by two mythical lions believed to guard against bad influences and evil spirits.

In 2008, Skylawn opened a state of the art funeral home. The building is expansive and welcoming with bright, spacious visitation rooms, two large elegant chapels and comfortable arrangement rooms. The funeral home also features an exceptional reception area. The Vista room has an outdoor patio and floor-to-ceiling windows opening to a picturesque waterfall and rock garden — a beautiful setting in which to celebrate the life of a loved one.

Skylawn added a 26-acre development called Skyview in 2016, complete with open views of the surrounding nature preserve and the Pacific Ocean. Several gardens make up Skyview, with a wide variety of interment options. The Lotus Garden within Skyview is aptly named for the quarter mile of cascading streams and waterfalls that form the petals of a Lotus flower. This garden contains premium estates, and a mix of ground burial and custom cremation options throughout. Garden of the Saints is also situated within Skyview offering double depth lawn crypts, and hosting a beautiful columbarium adorned with a statue of Our Lady Guadalupe.

Skylawn Funeral Home & Memorial Park is a premier full-service facility for the Bay Area and beyond, offering the one-stop convenience of a funeral home, cemetery and on-site crematory. Having provided exceptional service for over 60 years, we're proud of the reputation we've built on quality, sincerity, and trust; with services that celebrate the life of each individual and respect the wishes of every family. Skylawn is truly a "place like no other".



# SKYLAWN HISTORY

