

# General Price List

Prices effective

October 1, 2025

Subject to change without notice.



*Skylawn*

FUNERAL HOME, MEMORIAL PARK & CREMATORY



Route 35 @ Highway 92, San Mateo, CA. 94402

Telephone: 650-349-4411

[www.Skylawn.com](http://www.Skylawn.com)

FD 1848



FUNERAL HOME, MEMORIAL PARK & CREMATORY

It is our promise to meet or beat any local funeral home's published price for services and merchandise.

### **COMPLETE FUNERAL PACKAGES**

To help make funeral planning easier for you, we offer several funeral and cremation packages. These packages provide you with a wide range of selections, options and prices at an incredible value. Most importantly, they allow you to spend more time personalizing the ceremony as you celebrate the life of the person you are honoring. Many of the packages are designed to provide a complete funeral ceremony, including both the professional services and the necessary merchandise.

### **OUR PAYMENT POLICY**

To lose someone you love can be a devastating experience. It is frequently traumatic and can seriously impact judgment. We believe in the importance of the recognition and meaningful celebration of a life that has been lived and will assist in arranging an appropriate service to meet your individual needs. It is also important to be realistic in respect to funeral expenditures. We do not want a family to spend more than they should, nor less than they would like. What is important is that the arrangements be in keeping with the family's wishes and budget.

Provisions for payment are due at the time of the arrangement conference. To avoid any possibility of misunderstanding or embarrassment and for your convenience, we accept the following methods of payment: cash, check, credit or debit card, insurance assignments of verifiable life insurance policies, payment by forwarding or receiving funeral homes or pre-paid funeral plan. Please consult your funeral director or advisor with any and all questions or concerns.

### **PREPLANNING ASSISTANCE**

We provide free assistance and consultations with end-of-life planning. When you choose to preplan, you lock in today's prices and relieve your loved ones from the financial and emotional burden of making difficult decisions and paying for services at the time of need.

Our staff is committed to your complete satisfaction. We pride ourselves on the quality of our service and our dedication to the community. We will answer your questions in a clear and understandable manner, and ensure the arrangements you make meet your individual wishes. We will explain the value and benefit of all available options, and take the time to explain prices and payment methods to your satisfaction.

Thank you for placing your trust and confidence in our staff.

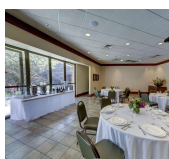


*Signature Services*<sup>SM</sup>

Signature Services<sup>SM</sup> are more than an addition to a service, they are a personal and meaningful element that brings a special touch to the day's events. From a memorial slideshow to a personalized woven blanket, these selections add a powerful feeling that brings everyone together.

### Beautifully Honor Your Loved Ones

We illuminate paths to peace with personalized ceremonies and memorial tributes. Our Signature Services<sup>SM</sup> can help create something that's very unique and personalized - and you may find that choosing one, or even a few of these, helps make your memories even more special. Explore our incredible range of Signature Services below.



#### Reception Room

Whether your family is holding a traditional funeral service or a memorial service, a reception provides and opportunity to gather and share memories. Reception Room does not include catering costs.



#### Framed Portrait

Use your favorite photo to create a focal point in your service. Available as a single photo portrait, or a collage using up to 4 photos. Make this a special and unique piece with your choice of a custom frame, many color and design options.



#### Flag Case

This Wooden Flag case proudly displays a Veterans Flag in all its proper glory meticulously crafted, it is truly a stunning and safe way to keep the your loved one's honor alive.



#### Woven Photo Blanket

Create a special piece that you can wrap yourself in for years to come. Use your favorite photo, or let us create a collage of photos and elements that will make this blanket an incredible comfort.



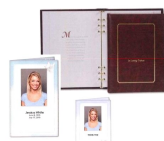
#### Coffee and Tea Service

To promote post-service gathering for your guests, we can provide a full coffee and tea service, which includes fresh-brewed coffee (including decaf), a selection of regular and herbal teas, as well as sweeteners, creamers, cups, spoons and napkins.



#### Legacy Fingerprint Jewelry

Custom Jewelry using the fingerprint of your loved one or a special image to remember Jewelry includes the pendant and chain 1n Sterling Silver.



#### Memorial Stationary Package

A simple and respectful way to honor your loved one. This package includes: Service folders, Guest book, Acknowledgement cards, Prayer cards). Each item can be tailored to reflect the personality, beliefs, and legacy of the departed. We offer design options to suit your needs.



#### Asian Burning Package

Our Asian Burning Package includes passover money, gold/silver, american money, large paper bundle, incense, Kai Chin, a passport to burn and a passport for your hands. Our deluxe offering also includes a joss stick, house, two servants, and a car with a driver.



All Signature Services<sup>SM</sup> are available as part of memorial packages or as individual additions to memorial services.

# Funeral Packages

Designed to make your selections easy while meeting the needs of your family, our Funeral Packages contain all the items necessary for your services.

## Skylawn Funeral Home

Skylawn Funeral Home is a full service facility featuring spacious visitation rooms, two elegant chapels and an exceptional reception room with an outdoor patio.

For Families who prefer to provide their own food and refreshments, our reception facilities are available at a resonable cost. Please note no alcohol is permitted without a valid Alcoholic Beverage license.

**Available for Pre Arrangements Only**

## SafelyHome<sup>SM</sup> Protection

SafelyHome Protection Plan coordinates and expertly manages every complicated, stressful and costly detail involved in the preparation for transport back home from anywhere in the world, removing these burdens from your families and funeral directors. With a single one-time fee, you can rest assured you will get home safe.



# Elite

## Funeral Package

### Services

Funeral director and staff services	\$ 3,200
Transfer into our care	\$ 695
Embalming	\$ 1,250
Cosmetology and Hairdressing	\$ 170
Dressing and Casketing	\$ 330
Visitation for 4 hours (3pm - 7pm)	\$ 1,000
Chapel, church, or graveside service	\$ 1,000
Funeral Coach	\$ 400
Service Vehicle	\$ 220

### Merchandise

Casket Selection		\$23,980
	Z64 899 IDH Venitian Bronze	147961
	710 President-Full Top	209436
	710 President-Cut Top	202149

### Service Items

Use of Golden Gate Room for light reception (during visitation)	\$ 400
Flower allowance	\$ 1,000
5 Signature Services Selections (\$300 each)	\$ 1,500

Total	\$35,145
Discount	<b>\$2,950</b>
<b>Package Price</b>	<b>\$32,195</b>

**SafelyHome**  
Protection<sup>SM</sup>

\$ 495

**Package Price with SafelyHome<sup>SM</sup> Protection**

**\$32,690**

\* Another location for services may incur additional fees

\*\*Refunds or credits will not be provided for any package sale goods or services that remain unused by the customer at the time of need.

~ Declinable option

# Custom

## Funeral Package

### Services

Funeral director and staff services	\$ 3,200
Transfer into our care	\$ 695
Embalming	\$ 1,250
Cosmetology and Hairdressing	\$ 170
Dressing and Casketing	\$ 330
Visitation for 4 hours (3pm - 7pm)	\$ 1,000
Chapel, church, or graveside service	\$ 1,000
Funeral Coach	\$ 400
Service Vehicle	\$ 220

### Merchandise

Casket Selection	\$14,305
------------------	----------

Golden Pearl	185489
U46 844 NDH Tapestry Rose	147901
Y39 884 IDH Aegean Copper	147935
7V3 828 HD Pearson Cherry	202512

### Service Items

Use of Golden Gate Room for light reception (during visitation)	\$ 400
Flower allowance	\$ 900
4 Signature Services Selections (\$300 each)	\$ 1,200

Total	\$25,070
Discount	<b>\$2,650</b>
<b>Package Price</b>	<b>\$22,420</b>

**SafelyHome**  
Protection<sup>SM</sup>

\$ 495

**Package Price with SafelyHome<sup>SM</sup> Protection**

**\$22,915**

\* Another location for services may incur additional fees

\*\*Refunds or credits will not be provided for any package sale goods or services that remain unused by the customer at the time of need.

~ Declinable option

# Premium

## Funeral Package

### Services

Funeral director and staff services	\$ 3,200
Transfer into our care	\$ 695
Embalming	\$ 1,250
Cosmetology and Hairdressing	\$ 170
Dressing and Casketing	\$ 330
Visitation for 4 hours (3pm - 7pm)	\$ 1,000
Chapel, church, or graveside service	\$ 1,000
Funeral Coach	\$ 400
Service Vehicle	\$ 220

### Merchandise

Casket Selection	\$10,185
------------------	----------

4F6 861 HD Cameo	146862
P90 8J3 UDH Star Quartz	246186
UA7 833 DH Fawn	147913
UG1 828 CDH Silver Sapphire	185491
UG1 828 CDH Golden Sand	185493

### Service Items

Use of Golden Gate Room for light reception (during visitation)	\$ 400
Flower allowance	\$ 800
3 Signature Services Selections (\$300 each)	\$ 900

Total	\$20,550
Discount	<b>\$1,700</b>
<b>Package Price</b>	<b>\$18,850</b>

<b>SafelyHome</b> Protection <sup>SM</sup>	\$ 495
<b>Package Price with SafelyHome<sup>SM</sup> Protection</b>	<b>\$19,345</b>

\* Another location for services may incur additional fees

\*\*Refunds or credits will not be provided for any package sale goods or services that remain unused by the customer at the time of need.

~ Declinable option

# Standard

## Funeral Package

### Services

Funeral director and staff services	\$ 3,200
Transfer into our care	\$ 695
Embalming	\$ 1,250
Cosmetology and Hairdressing	\$ 170
Dressing and Casketing	\$ 330
Visitation for 4 hours (3pm - 7pm)	\$ 1,000
Chapel, church, or graveside service	\$ 1,000
Funeral Coach	\$ 400
Service Vehicle	\$ 220

### Merchandise

Casket Selection				\$ 7,320
NL1 8K3 H Claret	251960	OC1 8K3 UH Carnation	280219	
NL1 8K3 H Indigo Blue	251972	O61 8J6 HDH Burnished Silver	273553	
N01 8K3 CDH Merlot	239723	495 825 CH Bailey	263781	
OC1 8K3 UH Finch	280218			

### Service Items

Use of Golden Gate Room for light reception (during visitation)	\$ 400
Flower allowance	\$ 700
2 Signature Services Selections (\$300 each)	\$ 600

Total	\$17,285
Discount	<b>\$1,400</b>
<b>Package Price</b>	<b>\$15,885</b>

**SafelyHome**  
Protection<sup>SM</sup>

\$ 495

**Package Price with SafelyHome<sup>SM</sup> Protection**

**\$16,380**

\* Another location for services may incur additional fees

\*\*Refunds or credits will not be provided for any package sale goods or services that remain unused by the customer at the time of need.

~ Declinable option



# Basic

## Funeral Package

### Services

Funeral director and staff services	\$ 3,200
Transfer into our care	\$ 695
Embalming	\$ 1,250
Cosmetology and Hairdressing	\$ 170
Dressing and Casketing	\$ 330
Chapel, church, or graveside service	\$ 1,000
Visitation up to 2 hours prior to service on same day	\$ 550
Funeral Coach	\$ 400
Service Vehicle	\$ 220

### Merchandise

Casket Selection		\$ 4,620
8N1 D Argo Orchid	278912	
8N1 D Argo Silver	278920	
8N1 D Argo Sand	278921	
QD2 8F3 A Pisces White	257953	

### Service Items

Flower allowance	\$ 400
Signature Services Selections	\$ 300

Total	\$13,135
Discount	<b>\$1,100</b>
<b>Package Price</b>	<b>\$12,035</b>

<b>SafelyHome</b> Protection <sup>SM</sup>	\$ 495
<b>Package Price with SafelyHome<sup>SM</sup> Protection</b>	<b>\$12,530</b>

\* Another location for services may incur additional fees

\*\*Refunds or credits will not be provided for any package sale goods or services that remain unused by the customer at the time of need.

~ Declinable option

# Simplicity

## Funeral Package

### Services

Funeral director and staff services	\$ 3,200
Transfer into our care	\$ 695
Sanitary Care of Unembalmed Remains & Dressing	\$ 800
Chapel, church, or graveside service	\$ 1,000
Private Identification, up to 30 mins. / up to 10 attendees	\$ 400
Funeral Coach	\$ 400
Service Vehicle	\$ 220

### Merchandise

Casket Selection	\$ 2,730
------------------	----------

4C1 8J5 UDH Delray	146853
CM2 8N1 A Spectra Blue	221506
CM2 8N1 A Spectra Silver	221507
CM2 8N1 A Spectra White	223045
CM2 8N1 A Spectra Black	256354

Total	\$9,445
Discount	<b>\$800</b>
<b>Package Price</b>	<b>\$8,645</b>

<b>SafelyHome</b> Protection <sup>SM</sup>	\$ 495
<b>Package Price with SafelyHome<sup>SM</sup> Protection</b>	<b>\$9,140</b>

\* Another location for services may incur additional fees

\*\*Refunds or credits will not be provided for any package sale goods or services that remain unused by the customer at the time of need.

~ Declinable option

## Cremation Packages

Designed to make your selections easy while meeting the needs of your family, our Cremation Packages contain all the items necessary for your services.

## Skylawn Funeral Home

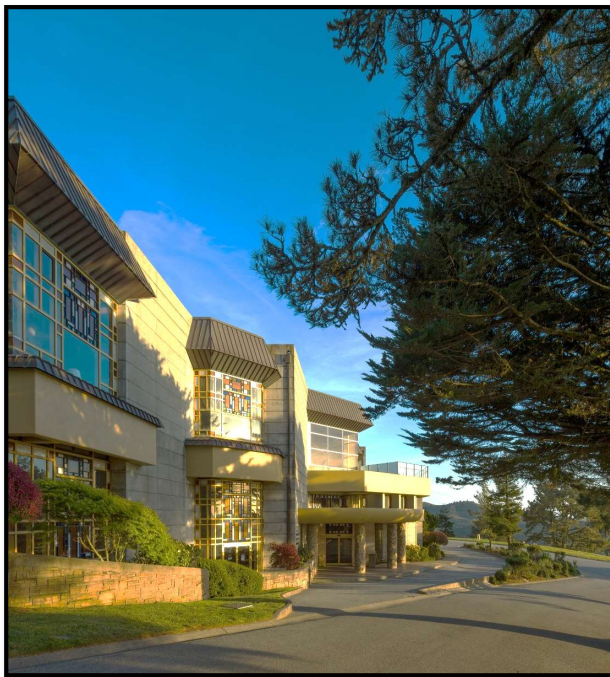
Skylawn Funeral Home is a full service facility featuring spacious visitation rooms, two elegant chapels and an exceptional reception room with an outdoor patio.

For Families who prefer to provide their own food and refreshments, our reception facilities are available at a resonable cost. Please note no alcohol is permitted without a valid Alcoholic Beverage license.

**Available for Pre Arrangements only**

## SafelyHome<sup>SM</sup> Protection

SafelyHome Protection Plan coordinates and expertly manages every complicated, stressful and costly detail involved in the preparation for transport back home from anywhere in the world, removing these burdens from your families and funeral directors. With a single one-time fee, you can rest assured you will get home safe.



# Ceremonial

## Cremation Package

Ceremonial Cremation Services are inclusive packages designed for those wanting a visitation or memorial services. With options for cremation caskets, these packages set the stage for a complete memorialization service including Signature Services<sup>SM</sup>.

**Each Package contains the following Service, Facility and Equipment Items    \$ 7,140**

Funeral Director & Staff Services  
Transfer into our care  
Embalming  
Cremation Fee

Cosmetology and Hairdressing  
Dressing & Casketing  
Service in our chapel

Premium	Standard	Basic
Package includes all of the above, <b>plus:</b>	Package includes all of the above, <b>plus:</b>	Package includes all of the above, <b>plus:</b>
<b><i>Brockton Rental plus Rental Insert</i></b>	<b><i>Pacific Pine</i></b>	<b><i>Grey Doeskin Oval</i></b>
Casket \$2,405	Casket \$1,825	Casket \$1,630
Visitation for 4 hours (3pm to 7pm) \$1,000	Visitation up to 2 hours prior to service on the same day \$550	Visitation up to 2 hours prior to service on the same day \$550
Flower Allowance \$550	Flower Allowance \$450	Flower Allowance \$350
Urn Allowance \$575	Urn Allowance \$470	Urn Allowance \$365
Reception \$400		
Signature Selection \$900	Signature Selection \$600	Signature Selection \$300
<b>Total</b> \$12,970	<b>Total</b> \$11,035	<b>Total</b> \$10,335
<b>Discount</b> <b>\$3,175</b>	<b>Discount</b> <b>\$2,640</b>	<b>Discount</b> <b>\$2,340</b>
<b>Package Price</b> <b>\$9,795</b>	<b>Package Price</b> <b>\$8,395</b>	<b>Package Price</b> <b>\$7,995</b>
Price with \$495	Price with \$495	Price with \$495
<b>Travel Protection</b> <b>\$10,290</b>	<b>Travel Protection</b> <b>\$8,890</b>	<b>Travel Protection</b> <b>\$8,490</b>

Funeral vehicle (e.g. hearse) for off-site services additional \$400.00

\*\*Refunds or credits will not be provided for any package sale goods or services that remain unused by the customer at the time of need.

# Memorial

## Cremation Package

Memorial Cremation Services are packages designed for those wanting memorial services with cremation disposition. These packages provide options for cremation containers as well as included Signature Services<sup>SM</sup>.

**Each Package contains the following Service, Facility and Equipment Items    \$ 6,590**

Funeral Director & Staff Services                      Service in our chapel  
Transfer into our care                                      Cremation Fee  
Sanitary Care of Unembalmed Remains & Dressing  
Private Identification, up to 30 mins / upto 10 attendees

Premium		Standard		Basic	
Package includes all of the above, <b>plus:</b>		Package includes all of the above, <b>plus:</b>		Package includes all of the above, <b>plus:</b>	
<b><i>Grey Doeskin Oval</i></b>		<b><i>Hadley</i></b>		<b><i>Novato</i></b>	
Casket	\$1,630	Casket	\$1,570	Casket	\$1,360
Flower Allowance	\$450	Flower Allowance	\$350	Flower Allowance	\$250
Urn Allowance	\$575	Urn Allowance	\$470	Urn Allowance	\$365
Signature Selection	\$900	Signature Selection	\$600	Signature Selection	\$300
<b>Total</b>	<b>\$10,145</b>	<b>Total</b>	<b>\$9,580</b>	<b>Total</b>	<b>\$8,865</b>
<i>Discount</i>	<i><b>\$3,150</b></i>	<i>Discount</i>	<i><b>\$2,785</b></i>	<i>Discount</i>	<i><b>\$2,370</b></i>
<b>Package Price</b>	<b>\$6,995</b>	<b>Package Price</b>	<b>\$6,795</b>	<b>Package Price</b>	<b>\$6,495</b>
Price with		Price with		Price with	
<b>Travel Protection</b>		<b>Travel Protection</b>		<b>Travel Protection</b>	
\$495		\$495		\$495	
<b>\$7,490</b>		<b>\$7,290</b>		<b>\$6,990</b>	

Funeral vehicle (e.g. hearse) for off-site services additional \$400.00

\*\*Refunds or credits will not be provided for any package sale goods or services that remain unused by the customer at the time of need.

# Non-Ceremonial

## Cremation Package

Non-Ceremonial Services are simple packages that include all necessary items for cremation disposition.

**Each Package contains the following Service, Facility and Equipment Items    \$ 5,590**

Funeral Director & Staff Services                      Cremation Fee  
Transfer into our care  
Sanitary Care of Unembalmed Remains & Dressing  
Private Identification, up to 30 mins / upto 10 attendees

Premium		Standard		Basic	
Package includes all of the above, <b>plus:</b>		Package includes all of the above, <b>plus:</b>		Package includes all of the above, <b>plus:</b>	
<b><i>Andura</i></b>		<b><i>Trayview</i></b>		<b><i>Baden</i></b>	
Container	\$1,045	Container	\$650	Container	\$600
Urn Allowance	\$575	Urn Allowance	\$470	Urn Allowance	\$365
<b>Total</b>	<b>\$7,210</b>	<b>Total</b>	<b>\$6,710</b>	<b>Total</b>	<b>\$6,555</b>
<b>Discount</b>	<b>\$2,215</b>	<b>Discount</b>	<b>\$2,115</b>	<b>Discount</b>	<b>\$2,060</b>
<b>Package Price</b>	<b>\$4,995</b>	<b>Package Price</b>	<b>\$4,595</b>	<b>Package Price</b>	<b>\$4,495</b>
Price with	\$495	Price with	\$495	Price with	\$495
<b>Travel Protection</b>	<b>\$5,490</b>	<b>Travel Protection</b>	<b>\$5,090</b>	<b>Travel Protection</b>	<b>\$4,990</b>

\*\*Refunds or credits will not be provided for any package sale goods or services that remain unused by the customer at the time of need.

## SKYLAWN MEMORIAL PARK & FUNERAL HOME

Prices subject to change without notice. All Prices effective:

**10/1/2025**

### GENERAL PRICE LIST

The goods and services shown below are those we can provide to our customers. You may choose only the items you desire. However, any funeral arrangements you select will include a charge for our basic services and overhead. If legal or other requirements mean you must buy any items you did not specifically ask for, we will explain the reason in writing on the statement we provide describing the funeral goods and services you selected. Unless legal or other requirements mean you must buy any items not specifically asked for, you will be charged only for those items you select. There may be extra charges for other items, such as cemetery fees and flowers.

#### **BASIC SERVICES OF THE FUNERAL DIRECTOR, STAFF AND OVERHEAD** **\$ 3,200**

This fee for our basic services and overhead will be added to the total cost of the funeral arrangements you select. (This fee is already included in our charges for direct cremations, immediate burials, and forwarding or receiving remains )

This Fee includes but is to limited to the following:

- Staff to respond to the initial request for service 24 hours a day, 365 days a year
- Preparation, securing and filing of necessary permits and certificates
- Ordinary sheltering of the remains
- Conducting the arrangement conference
- Coordinating service plans with cemetery, crematory, vault company and/or other parties involved in the final disposition of the deceased
- Clerical assistance in the completion of various forms, placing notices and permits associated with a funeral

Also included in this charge are overhead expenses relative to our facility such as insurance, secretarial and administrative expenses, maintenance and utility expenses, equipment and inventory costs, and governmental compliance.

### PREPARATION OF THE BODY

Except in certain special cases, embalming is not required by law. Embalming may be necessary, however, if you select certain funeral arrangements, such as a funeral with viewing. If you do not want embalming, you usually have the right to choose an arrangement that does not require you to pay for it, such as direct cremation or immediate burial.

<b>Embalming</b>	<b>\$ 1,250</b>
<b>Use of Preparation Room for Clinical or Ritual Use, up to 3 hours</b>	<b>\$ 895</b>
<b>Sanitary Care, Dressing, and Casketing of Un-Embalmed Remains (no cosmetics)</b>	<b>\$ 800</b>
<b>Special care for autopsied cases</b>	<b>\$ 395</b>
<b>Dressing and/or Casketing of Embalmed Remains</b>	<b>\$ 330</b>
<b>Cosmetology and Hairdressing of Embalmed Remains (by staff)</b>	<b>\$ 170</b>
<b>Refrigeration per day after 4th day of use</b>	<b>\$ 55</b>

*It is the policy of our firm to require refrigeration of unembalmed remains 24 hour after death*

## USE OF FACILITIES AND STAFF

<b>Use of facilities and staff services for Visitation up to 4 hours (3pm - 7pm)</b> <i>Our services include set-up of visitation area, placement of encased remains, display of floral arrangements, supervision of and attendance during the gathering</i>	<b>\$ 1,000</b>
<b>Use of facilities and staff services for Visitation up to 2 hours prior to service on same day</b> <i>Our services include set-up of visitation area, placement of encased remains, display of floral arrangements, supervision of and attendance during the gathering</i>	<b>\$ 550</b>
<b>Use of facilities and staff services for Funeral Ceremony in our chapel, up to 2 hours</b> <i>Our services include coordinating the ceremonial arrangements, supervision of the ceremony, and staff to assist with the ceremony</i>	<b>\$ 1,000</b>
<b>Use of facilities and staff services for Memorial Service (without remains present) in our chapel, up to 2 hours</b> <i>Our services include coordinating the memorial service arrangements, supervision of the memorial ceremony service, and staff to assist with the ceremony</i>	<b>\$ 1,000</b>
<b>Staff Services for Funeral Ceremony at religious facility or other outside facility, up to 3 hours</b> <i>Our services include coordinating the funeral ceremony arrangements, supervision of the funeral ceremony, and staff to assist with the ceremony</i>	<b>\$ 1,295</b>
<b>Staff services for Memorial Ceremony (without remains present) at religious facility or other outside facilities, up to 3 hours</b> <i>Our services include coordinating the memorial ceremony arrangements, supervision of the memorial ceremony, and staff to assist with the ceremony</i>	<b>\$ 1,295</b>
<b>Staff services for Visitation at religious facility or other outside facilities, up to 3 hours</b> <i>Our services include coordinating the visitation arrangements, supervision of the visitation, and staff to assist with the ceremony</i>	<b>\$ 1,295</b>
<b>Equipment and staff services for graveside ceremony, up to 1 hour</b> <i>Our services include accompaniment of remains to cemetery, supervision of graveside ceremony, and staff to assist with the ceremony</i>	<b>\$ 1,000</b>



<b>Overnight Use of Facilities and Staff (requires management approval)</b>	<b>\$ 3,000</b>
<b>Additional charge for evening service, per hour</b>	<b>\$ 250</b>
<b>Use of Vista Reception Room, up to 3 hours when not using Skylawn preferred caterer</b>	<b>\$ 1,200</b>
<b>Use of Vista Reception Room, up to 3 hours when using Skylawn preferred caterer</b>	<b>\$ 900</b>
<b>Use of Golden Gate Reception Room for light reception, up to 3 hours (during visitation)</b>	<b>\$ 400</b>
<b>Use of Facility for Private Identification, up to 30 mins / 10 attendees</b>	<b>\$ 400</b>
<b>Additional charge for Holiday Service</b>	<b>\$ 1,500</b>
<b>Additional charge for Saturday or Sunday</b>	<b>\$ 1,200</b>

### **OUTSIDE USE OF FACILITIES AND STAFF - Monday thru Friday**

*~ When Skylawn Funeral Home has no involvement with care and disposition of remains -*

<b>Rental of Funeral Home Chapel or Service Room, up to 2 hours</b>	<b>\$ 2,000</b>
<b>Rental of Vista Reception Room, up to 3 hours when not using Skylawn preferred caterer</b>	<b>\$ 1,200</b>
<b>Rental of Vista Reception Room, up to 3 hours when using Skylawn preferred caterer</b>	<b>\$ 900</b>

### **TRANSPORTATION**

*Within 30 mile radius. Additional mileage will be charged at \$6.00 per mile*

<b>Transfer of deceased from place of death to our funeral home</b>	<b>\$ 695</b>
<b>Funeral Coach / Hearse</b>	<b>\$ 400</b>
<b>Flower Transportation</b>	<b>\$ 220</b>
<b>Service Utility vehicle</b>	<b>\$ 220</b>
<b>Transfer of deceased to or from airport</b>	<b>\$ 695</b>
<b>Transfer of deceased to anatomical donation</b>	<b>\$ 695</b>
<b>Additional personnel required for transfer of deceased, per person</b>	<b>\$ 200</b>

### **FORWARDING REMAINS TO ANOTHER FUNERAL HOME \$ 3,900**

*This charge includes removal of remains within 30 miles, basic services of staff, necessary authorizations, embalming, and use of preparation room, dressing and casketing and transportation to local airport or other place of shipment within a 30-mile radius (excluding shipping charges). This charge does not include visitation ceremonies or shipping container. This charge applies to shipment within the continental U.S. only.*

### **RECEIVING REMAINS FROM ANOTHER FUNERAL HOME \$ 3,200**

*This charge includes basic services of staff, transportation from local airport within 30 miles or other shipping destination and transportation of remains to cemetery or crematory within 30 miles. This charge does not include visitation or ceremonies.*

## DISINTERMENT

Starting at \$ 3,650

*This charge includes the coordination of the disinterment within the same cemetery, or two local cemeteries, (within 30 miles), obtaining necessary authorizations, supervision by a licensed funeral director of the disinterment of the casket and /or outer burial container from the grave and re-interment of the casket /outer burial container, costs of disposing of the casket or outer burial container, transferring of the remains into another casket/outer burial container and excludes the costs of a replacement casket and/or outer burial container. All disinterment's require management's approval.*

## DIRECT CREMATION (Range)

\$ 2,880 \$ 35,330

*Cremation without formal viewing or ceremony. If you want to arrange a direct cremation, you can use an alternative container. Alternative containers encase the body and can be made of materials like fiberboard or composition materials (with or without an outside covering). The containers we provide are alternative containers and other cremation containers, including containers made of wood, containers made of fiberboard, containers made of cardboard and containers made of other composite materials. Our charges for direct cremation (without ceremony) included basic services of the funeral director and staff, transfer of remains to the funeral establishment, refrigeration, and crematory fee. The crematory fee of \$495.00 is included.*

**Direct cremation with container provided by the purchaser** (All such containers must meet any applicable state or crematory requirements). \$ 2,880

**Direct Cremation with casket from our facility, in addition to cost of casket.** \$ 2,880

**Direct Cremation with minimum cardboard alternative container** \$ 2,990

**Direct Cremation with cremation on Skylawn Memorial Park contract** \$ 2,385

**Skylawn Memorial Park Cremation - Monday through Friday** \$ 495

**Additional Charge for Cremation request on a Holiday** \$ 1,500

**Additional Charge for Cremation request on Saturday or Sunday** \$ 1,200

**Additional Charge for Witness Cremation, Mon thru Fri (9am - 1pm)** \$ 600

**Additional Charge for Witness Cremation, Sat or Sun (9am - 1pm)** \$ 1,200

**Additional Charge for Witness Cremation, Holiday (9am - 1pm)** \$ 2,500

**Cremation Rush Service - 24 hour turn around, after permit is secured** \$ 895

**Relic Collection @ Skylawn Crematory, up to 2 hours** \$ 600

**Cremation Reprocessing fee** \$ 295

*Witness Cremation includes visual identification of decedent and placement of Cremation Casket or Alternative Container in Cremation Chamber. Attendees allowed to remain in Crematory for up to 30 minutes at the start of cremation.*

## IMMEDIATE BURIAL (Range)

\$ 3,200 \$ 35,650

*Our charges for immediate burial (without any rites or ceremonies at the funeral home, graveside or elsewhere) include basic services of the funeral director and staff, refrigeration, dressing and casketing, transfer of the remains to funeral establishment, transportation of remains to cemetery.*

**Immediate burial with container provided by the purchaser** (All such containers must meet any applicable state or cemetery requirements.) \$ 3,200

**Immediate burial with casket selected from our facility, in addition to cost** \$ 3,200

**Immediate burial with minimum casket from our facility - Apollo Silver** \$ 5,015

<b>Alternative Containers (Range)</b>	\$ 110	\$ 1,045
A complete price list will be provided at the funeral home.		
<b>Caskets (Range)</b>	\$ 1,360	\$ 32,450
A complete price list will be provided at the funeral home.		
<b>Urns (Range)</b>	\$ 30	\$ 4,430
A complete price list will be provided at the funeral home.		
<b>Ceremonial Rental Casket with Insert</b>		\$ 2,405
(Refer to Casket Price List as provided at the funeral home) If you choose a funeral service where a rental casket is provided, the casket used for the funeral service may have been used in a previous funeral service. If the casket has been used in a previous funeral service, the interior lining has been replaced.		
<b>MAILING OF CREMATED REMAINS</b>		\$ 225
This charge includes handling, packaging and mailing of cremated remains with the purchase of an urn from our funeral home that is suitable for mailing, excluding the cost of the urn. Urns with cremated remains will only be mailed via the U.S. Post Office. Once the Post Office takes possession of the cremated remains, the funeral home is released from and assumes no further responsibility or liability for the cremated remains.		
<b>OTHER SERVICES AND MERCHANDISE</b>		
Acknowledgement Cards (per 75)	Starting at	\$ 170
Air Tray		\$ 345
Catered Receptions		As Selected
Combination Shipping Container ( <i>Embalmed remains, without casket</i> )		\$ 575
Department of Consumer Affairs Fee (Cremation, disposition not at Skylawn)		\$ 11.50
Dis-interment Oversight by Licensed Funeral Director / Embalmer		\$ 3,650
Dis-inurnment Oversight by Licensed Funeral Director / Embalmer		\$ 545
Document Mailing Fee with tracking		\$ 85
Foreign Consulate Document Processing		\$900 and up
Memorial Book	Starting at	\$ 85
Memory Jewelry		As Selected
Pall Bearer Gloves (6 pairs)		\$ 75
Prayer Cards (per 100)		\$ 175
Presentation Crucifix		\$ 70
Presentation Rosary		\$ 65
Service folders (per 100)		\$ 225
Ziegler Shipping Case (Unembalmed remains)		\$ 865
<b>CHILDREN'S GENERAL PRICE LIST</b>		
Children's Casket Price (Range)	\$ 435	\$ 2,995
Direct Cremation or Immediate Burial Fetal Remains *		\$ 500
Direct Cremation or Immediate Burial Infant (up to one year of age) *		\$ 600
Burial or Cremation: Child 0 - 4 years of age *		75% off GPL
Child 5 - 10 years of age *		50% off GPL
Child 11 - 18 years of age *		25% off GPL

*\*Pricing is for services only. Cremations include a simple cardboard cremation container and plastic temporary urn.  
Cash Advance Items and Additional Merchandise will not be discounted.*

## SIGNATURE SERVICES

Videographer, up to 2 hours	\$ 1,500
Charge for Holiday Service	\$ 1,500
Cremation request on a Holiday	\$ 1,500

<b>Asian Burning Package: Deluxe</b> (One House, Two Servants, One Car with Driver, One Joss Stick, One Bundle Passover Money, One Bundle Gold/Silver, Two Bundles American Money, One Bundle Large Paper, One Bundle Incense, One Bundle Kai Chin, One Passport to Burn, One Passport for Hands, One Large Red Envelope, One Small Red/White Envelope)	\$ 1,200
---	----------

Charge for Saturday or Sunday service	\$ 1,200
---------------------------------------	----------

Cremation request on Saturday or Sunday	\$ 1,200
---	----------

Witness Cremation, Sat or Sun (9am-1pm)	\$ 1,200
---	----------

Use of Vista Reception Room, up to 3 hours when not using Skylawn preferred caterer	\$ 1,200
---	----------

Dove Release - 12 Doves	\$ 900
-------------------------	--------

Bag Piper, Harpist, or Vocalist	\$ 900
---------------------------------	--------

<b>Memorial Stationary Package: Premium</b> (200 Service Folders, Deluxe Guest Book, 150 Acknowledgement Cards, 100 Prayer Cards)	\$ 900
---	--------

Use of Vista Reception Room, up to 3 hours when using Skylawn preferred cater	\$ 900
---	--------

Framed Memorial Portrait on Canvas	\$ 600
------------------------------------	--------

Thumbprint Pendant	\$ 600
--------------------	--------

Cherry Wood Memory Box	\$ 600
------------------------	--------

<b>Asian Burning Package: Basic</b> (One Bundle Passover Money, One Bundle Gold/Silver, Two Bundles American Money, One Bundle Large Paper, One Bundle Incense, One Bundle Kai Chin, One Passport to Burn, One Passport for Hands)	\$ 600
--	--------

Longevity Blankets (7 Blankets)	\$ 600
---------------------------------	--------

<b>Memorial Stationary Package: Standard</b> (100 Service Folders, Deluxe Guest Book, 75 Acknowledgement Cards, 100 Prayer Cards)	\$ 600
---	--------

Witness Cremation, Mon thru Fri (9am - 1pm)	\$ 600
---	--------

Memorial Tribute (up to 50 Photos)	\$ 300
------------------------------------	--------

Victory Flag Case	\$ 300
-------------------	--------

Catholic Traditions Package	\$ 300
-----------------------------	--------

Jewish Traditions Package	\$ 300
---------------------------	--------

Pall Bearer Package (Pallbearer gloves, Boutonnieres and Ties)	\$ 300
--	--------

Coffee & Tea Service	\$ 300
----------------------	--------

Memory Blanket	\$ 300
----------------	--------

<b>Memorial Stationary Package: Basic</b> (100 Service Folders, Standard Guest Book, 75 Acknowledgement Cards)	\$ 300
--	--------

## Casket Price List

Prices effective

**October 1, 2025**

Subject to change without notice.

### WOOD CASKETS by Batesville Casket Company

8SS 815 LH MONTRACHET MAHOGANY - Solid Mahogany, Champagne Velvet	148243	\$	32,450
710 PRESIDENT FULL TOP - Solid Mahogany - Dark, Silverbeige Velvet, Wood Bed	209436	\$	23,980
710 PRESIDENT CUT TOP - Solid Mahogany - Dark, Silverbeige Velvet	202149	\$	23,980
8PM 699 IHD PREMIER FULL TOP - Solid Mahogany, Champagne Velvet, Wood Bed	148244	\$	20,475
8X5 833 HD IMPERIAL - Solid Mahogany, Champagne Velvet	148247	\$	18,195
8PM 899 IHD PREMIER - Solid Mahogany, Champagne Velvet	148245	\$	18,065
7V3 828 HD PEARSON CHERRY - Cherry Veneer Dark, Champagne Velvet	202512	\$	14,305
SC-W9001-R ETETERINITY RED - Solid Afrian Mahogany, Dark Finish, Burgundy Velvet	CXWMA1XADB	\$	13,888
SC-W9001 ETETERINITY - Solid Afrian Mahogany, Dark Finish, Pearl Beige Velvet	CXWMA1XADP	\$	13,888
3V8 825 HD SACRAMENT MAPLE - Maple Veneer Dark, Champagne Velvet	205164	\$	11,290
4F6 861 HD CAMEO - Solid Hardwood, Moss Pink Velvet	146862	\$	10,185
2V1 880 HD WOODHAVEN PECAN - Pecan Veneer, Medium, Champagne Velvet	205162	\$	8,495
7NC 828 EMBASSY CHERRY - Solid Cherry Dark, Champagne Velvet	148222	\$	8,495
410 SYRACUSE CUT TOP - Select Hardwood Solid, Champagne Velvet	275548	\$	8,495
495 8 J3 H BRANSON - Select Hardwood Veneer, Medium, Woven Saffron	246736	\$	8,325
495 825 CH BAILEY - Select Hardwood Veneer, Khaki Linwood	263781	\$	7,320
468 847 D LYNX LIGHT BROWN - Wood Veneer, Rosetan Crepe	257923	\$	6,060
427 880 D LIBRA HARVEST BROWN - Wood Veneer Dark, Rosetan Crepe	241727	\$	5,935
461 H HW UNFINISHED 041M - Solid Hardwood Light, Ivory Crepe	148097	\$	4,860
847 D LYRA NATURAL - Veneer Light, Rosetan Crepe	269150	\$	3,635
847 D LYRA BROWN - Veneer Dark, Rosetan Crepe	269152	\$	3,635
AC1 8J5 UDH DELRAY - Select Hardwood, Rosetan Crepe	146853	\$	2,730

### METAL CASKETS by Batesville Casket Company

Z64 824 DH CLASSIC GOLD - 48 Oz Bronze, Gasketed, Champagne Velvet	147959	\$	27,700
Z64 899 IDH VENETIAN BRONZE - 48 Oz Bronze, Gasketed, Champagne Velvet	147961	\$	23,980
U46 844 NDH TAPESTRY ROSE - Basic Stainless Steel, Gasketed, Moss Pink Velvet	147901	\$	14,305
Y39 884 IDH AEGEAN COPPER - 32 Oz Copper, Gasketed, Champagne Velvet	147935	\$	14,305
GOLDEN PEARL - 18 Gauge Steel, Gasketed, Eggshell Velvet	185489	\$	14,305
C47 802 NDH SILVER ROSE - 18 Gauge Steel, Gasketed, Natural Velvet	147765	\$	11,290
J35 825 D TOPAZ - 18 Gauge Steel, Gasketed, Champagne Velvet	147823	\$	11,290
J59 825 CDH GOLDEN MIDNIGHT - 18 Gauge Steel, Gasketed, Champagne Velvet	185487	\$	11,290
P90 8J3 UDH STAR QUARTZ - 18 Gauge Steel, Gasketed, Champagne Velvet	246186	\$	10,185
UA7 833 DH FAWN - Basic Stainless Steel - Brown, Gasketed, Champagne Velvet	147913	\$	10,185
UG1 828 CDH SILVER SAPPHIRE - Basic Stainless Steel, Gasketed, Silver Velvet	185491	\$	10,185
UG1 828 CDH GOLDEN SAND - Basic Stainless Steel - Gold Gasketed, Silver Velvet	185493	\$	10,185
U04 872 DH BLUE MIST - 18 Gauge Steel, Gasketed, Medium Weight, Blue with Silver Trim	147903	\$	8,495
N01 8BG H MIDNIGHT GOLD - 18 Gauge Steel, Gasketed, Black with Gold Trim Velvet	279142	\$	8,495
OT9 8LT DH IVORY - 18 Gauge Steel, Gasketed, Medium Weight, Ivory Velvet	255453	\$	7,760
NL1 8K3 H CLARET - 18 Gauge Steel - Red, Gasketed, Medium Weight, Woven Ivory	251960	\$	7,320
NL1 8K3 H INDIGO BLUE - 18 Gauge Steel- Blue, Gasketed, Medium Weight, Woven Ivory	251972	\$	7,320
OC1 8K3 UH FINCH - 18 Gauge Steel- Light Blue, Gasketed, Medium Weight, Woven Ivory	280218	\$	7,320
OC1 8K3 UH CARNATION - 18 Gauge Steel- White, Gasketed, Medium Weight, Woven Ivory	280219	\$	7,320
N01 8K3 CDH MERLOT - 18 Gauge Steel, Gasketed, Medium Weight, Rosetan Crepe	239723	\$	7,320

O61 8J6 HDH BURNISHED SILVER - 18 Gauge Steel, Gasketed, Medium Weight, Champagne Velvet	273553	\$	7,320
Q98 847 A EMERALDTONE - 20 Gauge Steel, Non-Gasketed, Ivory Crepe	279864	\$	5,050
Q02 805 A EARTHTONE - 20 Gauge Steel, Non-Gasketed, Rosetan Crepe	148028	\$	4,860
QA2 809 A IVORY GOLD - 20 Gauge Steel, Gasketed, Ivory Crepe	148040	\$	4,780
8N1 D ARGO ORCHID - 20 Gauge Steel-Orchid, Gasketed, Moss Pink Crepe	278912	\$	4,620
8N1 D ARGO SILVER - 20 Gauge Steel-Silver, Gasketed, Ivory Crepe	278920	\$	4,620
QD2 8F3 A PISCES WHITE - 20 Gauge Steel-White, Gasketed, Ivory Crepe	257953	\$	4,620
8N1 D ARGO SAND - 20 Gauge Steel-Gold, Gasketed, Ivory Crepe	278921	\$	4,620
CM2 8N1 A SPECTRA SILVER - 20 Gauge Steel, Non-Gasketed, Ivory Crepe	221507	\$	2,730
CM2 8N1 A SPECTRA WHITE - 20 Gauge Steel, Non-Gasketed, Ivory Crepe	223045	\$	2,730
CM2 8N1 A SPECTRA BLACK - 20 Gauge Steel, Non-Gasketed, Silver Crepe	256354	\$	2,730
CM2 8N1 A SPECTRA BLUE - 20 Gauge Steel, Non-Gasketed, Light Blue Crepe	221506	\$	2,730
CM1 8F2 A APOLLO SILVER - 20 Gauge Steel, Non-Gasketed, Ivory Crepe	221502	\$	1,815

### CEREMONIAL RENTAL CASKET

BROCKTON Ceremonial Rental Casket with Insert - Oak Solid / Rosetan Crepe (SRVRCBRK / 248337)	\$	2,405
<i>(Rental Insert \$400+ tax plus Rental Unit \$2,005)</i>		
BECKHAM Ceremonial Rental Casket with Insert - Cherry Solid/Champagne Velvet (SRVRCBKH / 248337)	\$	2,405
<i>(Rental Insert \$400+ tax plus Rental Unit \$2,005)</i>		

### ALTERNATIVE CONTAINERS

ANDURA - Cardboard-Grey, Ivory Crepe Interior	279179	\$	1,045
TRAYVIEW - Cardboard-Brown, Fabric Interior not available	242414	\$	650
BADEN - Cardboard, Fabric Interior not available	252321	\$	600
HEAVY CARDBOARD CB1- Corrugated Cardboard - no interior	ALCCTNR	\$	110

### CREMATION ORIENTED CONTAINERS

PACIFIC PINE with handle - Wood Composite Medium, Rosetan Crepe	184744	\$	1,825
GREY DOESKIN OVAL CUT TOP - Cloth Covered Fiberboard, Ivory Crepe	147970	\$	1,630
HADLEY CREMATION CONTAINER - Wood Composite (MDF), Ivory Crepe	279185	\$	1,570
NOVATO CREMATION CONTAINER - Wood Composite (MDF), Ivory Crepe	279183	\$	1,360

### CHILDREN'S CASKETS

4'6" ASHLEY YOUTH 20 GAUGE STEEL, NON-GASKETED	CMS203YASH	\$	2,995
WHITE SHADED GOLD FINISH, WHITE CREPE INTERIOR 71005845			
3'6" ASHLEY YOUTH 20 GAUGE STEEL, NON-GASKETED	CMS00Y803	\$	2,900
WHITE SHADED GOLD FINISH, WHITE CREPE INTERIOR 71005843			
2'6" ASHLEY YOUTH 20 GAUGE STEEL, NON-GASKETED	CMS201YASH	\$	2,710
WHITE SHADED GOLD FINISH, WHITE CREPE INTERIOR 71005841			
4'6" ANGELIC INFANT/YOUTH FIBER BOARD CLOTH COVERED	CCLTH0Y803	\$	1,415
WHITE EXTERIOR, IVORY CREPE INTERIOR 70000695			
3'6" ANGELIC INFANT/YOUTH FIBER BOARD CLOTH COVERED	CCLTH0Y036	\$	1,305
WHITE EXTERIOR, IVORY CREPE INTERIOR 70000726			
2'6" ANGELIC INFANT/YOUTH FIBER BOARD CLOTH COVERED	CCLTH3M026	\$	760
WHITE EXTERIOR, IVORY CREPE INTERIOR 70000725			
24" ANGELIC INFANT FIBER BOARD CLOTH COVERED	CCLTH0M020	\$	650
WHITE EXTERIOR, IVORY CREPE INTERIOR 70000724			
20" ANGELIC INFANT FIBER BOARD CLOTH COVERED	CCLTH0M018	\$	435
WHITE EXTERIOR, IVORY CREPE INTERIOR 70000723			

### CASKET VAULT COMBO

31" Loved and Cherished Infant Casket	CM0000WL31	\$	1,495
24" Loved and Cherished Infant Casket	CM0000WL24	\$	995
19" Loved and Cherished Infant Casket	CM0000WL19	\$	695

## Our History

*Skylawn is perched atop the Montara mountain range on the San Francisco Peninsula between the San Francisco Bay and the Pacific Ocean. The park's 505 acres are surrounded by a nature preserve, and home to an abundance of wildlife including: deer, bobcat, racoon, skunk, fox, cougar, and many others. The unique location within the nature preserve ensures Skylawn's vast beauty will remain unspoiled for generations.*

*Designed by noted San Francisco landscape architects French and Jones, Skylawn Memorial Park opened October 1, 1959. Inside the park are architecturally significant structures, beautifully landscaped gardens, unobstructed views of the Bay and the Pacific, and a wealth of history. Architect Aaron Green designed the prominent Mausoleum in the Sky. Green was the West Coast representative of renowned architect Frank Lloyd Wright. Green also designed the entrance to Gan Hazikaron, a Jewish garden within Skylawn. There are also two remarkable Chinese gardens developed to the exact specifications of international Feng Shui masters. The triple gate at the top of Bai Ling Yuan II Plaza offers the perfect orientation, gazing down the canyon to the Pacific Ocean, the gates protected by two mythical lions believed to guard against bad influences and evil spirits.*

*In 2008, Skylawn opened a state of the art funeral home. The building is expansive and welcoming with bright, spacious visitation rooms, two large elegant chapels and comfortable arrangement rooms. The funeral home also features an exceptional reception area. The Vista room has an outdoor patio and floor-to-ceiling windows opening to a picturesque waterfall and rock garden — a beautiful setting in which to celebrate the life of a loved one.*

*Skylawn added a 26-acre development called Skyview in 2016, complete with open views of the surrounding nature preserve and the Pacific Ocean. Several gardens make up Skyview, with a wide variety of interment options. The Lotus Garden within Skyview is aptly named for the quarter mile of cascading streams and waterfalls that form the petals of a Lotus flower. This garden contains premium estates, and a mix of ground burial and custom cremation options throughout. Garden of the Saints is also situated within Skyview offering double depth lawn crypts, and hosting a beautiful columbarium adorned with a statue of Our Lady Guadalupe.*

*Skylawn Funeral Home & Memorial Park is a premier full-service facility for the Bay Area and beyond, offering the one-stop convenience of a funeral home, cemetery and on-site crematory. Having provided exceptional service for over 60 years, we're proud of the reputation we've built on quality, sincerity, and trust; with services that celebrate the life of each individual and respect the wishes of every family. Skylawn is truly a "place like no other".*

# *NOTES*