

General Price List

Prices effective

May 20, 2026

Subject to change without notice.



FUNERAL HOME, MEMORIAL PARK & CREMATORY



Route 35 @ Highway 92, San Mateo, CA. 94402

Telephone: 650-349-4411

www.Skylawn.com

FD 1848

PRIOR TO DRAFTING ANY CONTRACT FOR GOODS OR SERVICES, THE RESPONSIBLE PARTY OR THE DECEDENT'S SURVIVOR WHO IS HANDLING THE FUNERAL ARRANGEMENTS IS ENTITLED TO RECEIVE A COPY OF ANY PRENEED AGREEMENT IN THE POSSESSION OF THE FUNERAL ESTABLISHMENT THAT HAS BEEN SIGNED AND PAID FOR, IN FULL OR IN PART, BY OR ON BEHALF OF THE DECEDENT.



FUNERAL HOME, MEMORIAL PARK & CREMATORY

It is our promise to meet or beat any local funeral home's published price for services and merchandise.

COMPLETE FUNERAL PACKAGES

To help make funeral planning easier for you, we offer several funeral and cremation packages. These packages provide you with a wide range of selections, options and prices at an incredible value. Most importantly, they allow you to spend more time personalizing the ceremony as you celebrate the life of the person you are honoring. Many of the packages are designed to provide a complete funeral ceremony, including both the professional services and the necessary merchandise.

OUR PAYMENT POLICY

To lose someone you love can be a devastating experience. It is frequently traumatic and can seriously impact judgment. We believe in the importance of the recognition and meaningful celebration of a life that has been lived and will assist in arranging an appropriate service to meet your individual needs. It is also important to be realistic in respect to funeral expenditures. We do not want a family to spend more than they should, nor less than they would like. What is important is that the arrangements be in keeping with the family's wishes and budget.

Provisions for payment are due at the time of the arrangement conference. To avoid any possibility of misunderstanding or embarrassment and for your convenience, we accept the following methods of payment: cashier check, check, credit or debit card, insurance assignments of verifiable life insurance policies, payment by forwarding or receiving funeral homes or pre-paid funeral plan. Please consult your funeral director or advisor with any and all questions or concerns.

PREPLANNING ASSISTANCE

We provide free assistance and consultations with end-of-life planning. When you choose to preplan, you lock in today's prices and relieve your loved ones from the financial and emotional burden of making difficult decisions and paying for services at the time of need.

Our staff is committed to your complete satisfaction. We pride ourselves on the quality of our service and our dedication to the community. We will answer your questions in a clear and understandable manner, and ensure the arrangements you make meet your individual wishes. We will explain the value and benefit of all available options, and take the time to explain prices and payment methods to your satisfaction.

Thank you for placing your trust and confidence in our staff.



Signature ServicesSM are more than an addition to a service, they are a personal and meaningful element that brings a special touch to the day's events. From a memorial slideshow to a personalized woven blanket, these selections add a powerful feeling that brings everyone together.

Beautifully Honor Your Loved Ones

We illuminate paths to peace with personalized ceremonies and memorial tributes. Our Signature ServicesSM can help create something that's very unique and personalized - and you may find that choosing one, or even a few of these, helps make your memories even more special. We provide incredible range of Signature Services. Please see page 19.

Every Life Tells A Story

Funeral Packages

Designed to make your selections easy while meeting the needs of your family, our Funeral Packages contain all the items necessary for your services.

Skylawn Funeral Home

Skylawn Funeral Home is a full service facility featuring spacious visitation rooms, two elegant chapels and an exceptional reception room with an outdoor patio.

For Families who prefer to provide their own food and refreshments, our reception facilities are available at a reasonable cost. Please note no alcohol is permitted without a valid Alcoholic Beverage license.

Available for Pre Arrangements Only

SafelyHome ProtectionSM

SafelyHome Protection Plan coordinates and expertly manages every complicated, stressful and costly detail involved in the preparation for transport back home from anywhere in the world, removing these burdens from your families and funeral directors. With a single one-time fee, you can rest assured you will get home safe.



Elite

Funeral Package

Services

Funeral director and staff services	\$ 3,200
Transfer into our care	\$ 695
Embalming	\$ 1,250
Cosmetology and Hairdressing	\$ 170
Dressing and Casketing	\$ 330
Chapel or graveside service (Additional \$295 for outside facility / offsite services)	\$ 1,000
Visitation up to 4 hours (3pm - 7pm) OR up to 2 hours on the same day of the service	\$ 800
Funeral Coach	\$ 400
Service vehicle	\$ 220
Service total	\$ 8,065

Merchandise

Casket Selection	\$25,000
Z64 899 IDH Venitian Bronze	147961
710 President-Full Top	209436
710 President-Cut Top	202149

Service Items

Flower allowance	\$ 1,600
Signature Services Selections	\$ 1,200

Total	\$35,865
Discount	\$5,977
Package Price	\$29,888

Package total with Vista Reception (\$900) and Catering allowance (\$2100) \$32,888

SafelyHome \$ 495
ProtectionSM

Package Price with SafelyHomeSM Protection \$30,383

* Another location for services may incur additional fees

**Refunds or credits will not be provided for any package sale goods or services that remain unused by the customer at the time of need.

~ Declinable option

Diamond

Funeral Package

Services

Funeral director and staff services	\$ 3,200
Transfer into our care	\$ 695
Embalming	\$ 1,250
Cosmetology and Hairdressing	\$ 170
Dressing and Casketing	\$ 330
Chapel or graveside service (Additional \$295 for outside facility / offsite services)	\$ 1,000
Funeral Coach	\$ 400
Service vehicle	\$ 220
Service total	\$ 7,265

Premium		Standard		Basic	
Package includes all of the above, plus:		Package includes all of the above, plus:		Package includes all of the above, plus:	
Casket selection	\$13,888	Casket selection	\$10,110	Casket selection	\$ 7,705
<i>Golden Pearl 185489</i>		<i>Pembroke Cherry 148227</i>		<i>Bailey 263781</i>	
<i>Tapestry Rose 147901</i>		<i>Embassy Cherry 148222</i>		<i>Claret 251960</i>	
<i>Aegean Copper 147935</i>		<i>Provincial Maple 148191</i>		<i>Carnation 280219</i>	
<i>Pearson Cherry 202512</i>					
<i>Eternity Red CAWMA1XADB</i>					
<i>Eternity CAWMA1XADBP</i>					
Flower Allowance	\$1,200	Flower Allowance	\$900	Flower Allowance	\$600
Signature Selection	\$900	Signature Selection	\$600	Signature Selection	\$300
Total	\$23,253	Total	\$18,875	Total	\$15,870
<i>Discount</i>	\$4,365	<i>Discount</i>	\$2,987	<i>Discount</i>	\$2,982
Package Price	\$18,888	Package Price	\$15,888	Package Price	\$12,888
Package total with Vista reception (\$900) and catering allowance (\$2100)	\$21,888	Package total with Vista reception (\$900) and catering allowance (\$2100)	\$18,888	Package total with Golden Gate/Portola reception (\$400) and catering allowance (\$600)	\$13,888
Price with	\$495	Price with	\$495	Price with	\$495
Travel Protection	\$19,383	Travel Protection	\$16,383	Travel Protection	\$13,383

~ Declinable option

* Another location for services may incur additional fees

**Refunds or credits will not be provided for any package sale goods or services that remain unused by the customer at the time of need.

Platinum

Funeral Package

Services

Funeral director and staff services	\$ 3,200
Transfer into our care	\$ 695
Embalming	\$ 1,250
Cosmetology and Hairdressing	\$ 170
Dressing and Casketing	\$ 330
Chapel or graveside service (Additional \$295 for outside facility / offsite services)	\$ 1,000
Funeral Coach	\$ 400
Service vehicle	\$ 220
Service total	\$ 7,265

Premium	
Package includes all of the above, plus:	
Casket selection	\$10,720
<i>Cameo 146862</i>	
<i>Star Quartz 246186</i>	
<i>Silver Sapphire 185491</i>	
<i>Golden Sand 185493</i>	
Flower Allowance	\$800
Signature Selection	\$900
Visitation	\$800
Total	\$20,485
<i>Discount</i>	\$3,737
Package Price	\$16,748
Package total with Vista reception (\$900) and catering allowance (\$2100)	\$19,748
Price with	\$495
Travel Protection	\$17,243

~ Declinable option

* Another location for services may incur additional fees

**Refunds or credits will not be provided for any package sale goods or services that remain unused by the customer at the time of need.

Standard	
Package includes all of the above, plus:	
Casket selection	\$7,705
<i>Claret 251960</i>	
<i>Indigo Blue 251972</i>	
<i>Merlot 239723</i>	
<i>Finch 280218</i>	
<i>Carnation 280219</i>	
<i>Burnished Silver 273553</i>	
<i>Bailey 263781</i>	
Flower Allowance	\$500
Signature Selection	\$600
Visitation	\$800
Total	\$16,870
<i>Discount</i>	\$3,374
Package Price	\$13,496
Package total with Vista reception (\$900) and catering allowance (\$2100)	\$16,496
Price with	\$495
Travel Protection	\$13,991

~ Declinable option

Basic	
Package includes all of the above, plus:	
Casket selection	\$ 4,865
<i>Argo Orchid 278912</i>	
<i>Argo Silver 278920</i>	
<i>Argo Sand 278921</i>	
<i>Pisces White 257953</i>	
Flower Allowance	\$400
Signature Selection	\$300
Total	\$12,830
<i>Discount</i>	\$3,635
Package Price	\$9,195
Package total with Golden Gate/Portola reception (\$400) and catering allowance (\$600)	\$10,195
Price with	\$495
Travel Protection	\$9,690

~ Declinable option

Simplicity

Funeral Package

Services

Funeral director and staff services	\$ 3,200
Transfer into our care	\$ 695
(Sanitary care of Unembalmed & Refrigeration & Dressing/Casketing) Or Ritual Washing	\$ 800
Chapel or graveside service (Additional \$295 for outside facility / offsite services)	\$ 1,000
Funeral Coach	\$ 400
Service vehicle	\$ 220
Service total	\$ 6,315

Premium	
Package includes all of the above, plus:	
Casket selection	\$4,865
<i>Argo Orchid 278912</i>	
<i>Argo Silver 278920</i>	
<i>Argo Sand 278921</i>	
<i>Pisces White 257953</i>	
Total	\$11,180
<i>Discount</i>	\$2,236
Package Price	\$8,944

Price with	\$495
Travel Protection	\$9,439

~ Declinable option

Standard	
Package includes all of the above, plus:	
Casket selection	\$2,875
<i>Delray 146853</i>	
<i>Spectra Blue 221506</i>	
<i>Spectra Silver 221507</i>	
<i>Spectra White 223045</i>	
<i>Spectra Black 256354</i>	
Total	\$9,190
<i>Discount</i>	\$1,838
Package Price	\$7,352

Price with	\$495
Travel Protection	\$7,847

~ Declinable option

Basic	
Package includes all of the above, plus:	
Alternative Container	\$ 115
<i>Heavy Cardboard CB1</i>	
Total	\$6,430
<i>Discount</i>	\$1,770
Package Price	\$4,660

Price with	\$495
Travel Protection	\$5,155

~ Declinable option

* Another location for services may incur additional fees

**Refunds or credits will not be provided for any package sale goods or services that remain unused by the customer at the time of need.

Cremation Packages

Designed to make your selections easy while meeting the needs of your family, our Cremation Packages contain all the items necessary for your services.

Skylawn Funeral Home

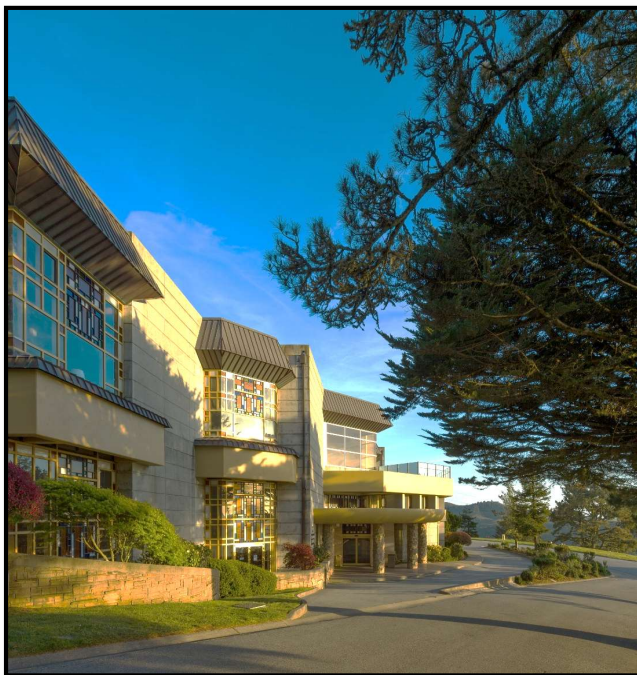
Skylawn Funeral Home is a full service facility featuring spacious visitation rooms, two elegant chapels and an exceptional reception room with an outdoor patio.

For Families who prefer to provide their own food and refreshments, our reception facilities are available at a reasonable cost. Please note no alcohol is permitted without a valid Alcoholic Beverage license.

Available for Pre Arrangements only

SafelyHome ProtectionSM

SafelyHome Protection Plan coordinates and expertly manages every complicated, stressful and costly detail involved in the preparation for transport back home from anywhere in the world, removing these burdens from your families and funeral directors. With a single one-time fee, you can rest assured you will get home safe.



Ceremonial

Cremation Package

Ceremonial Cremation Services are inclusive packages designed for those wanting a visitation or funeral services. With options for cremation caskets, these packages set the stage for a complete memorialization service.

Services

Funeral Director & Staff Services	\$ 3,200
Transfer into our care	\$ 695
Embalming	\$ 1,250
Cosmetology and Hairdressing	\$ 170
Dressing & Casketing	\$ 330
Chapel or graveside service (Additional \$295 for outside facility / offsite services)	\$ 1,000
Service Vehicle	\$ 220
Cremation Fee	\$ 495
Service total	\$ 7,360

Premium		Standard		Basic	
Package includes all of the above, plus:		Package includes all of the above, plus:		Package includes all of the above, plus:	
Brockton		Hadley		Novato	
Rental casket with Insert	\$2,425	Cremation Container	\$1,650	Cremation Container	\$1,430
Flower Allowance	\$600	Flower Allowance	\$500	Flower Allowance	\$400
Urn Allowance	\$385	Urn Allowance	\$385	Standard utility urn	\$30
Signature Selection	\$600	Signature Selection	\$300		
Visitation	\$800	Visitation	\$800		
Total	\$12,170	Total	\$10,995	Total	\$9,220
<i>Discount</i>	<i>\$3,395</i>	<i>Discount</i>	<i>\$2,960</i>	<i>Discount</i>	<i>\$2,640</i>
Package Price	\$8,775	Package Price	\$8,035	Package Price	\$6,580
Package total with Vista reception (\$900) and catering allowance (\$2100)	\$11,775	Package total with Vista reception (\$900) and catering allowance (\$2100)	\$11,035	Package total with Golden Gate/Portola reception (\$400) and catering allowance (\$600)	\$7,580
Price with	\$495	Price with	\$495	Price with	\$495
Travel Protection	\$9,270	Travel Protection	\$8,530	Travel Protection	\$7,075

Funeral vehicle (e.g. hearse) for off-site services additional \$400.00
Additional charges may apply for priority/ rush cremations

**Refunds or credits will not be provided for any package sale goods or services that remain unused by the customer at the time of need.

Memorial

Cremation Package

Memorial Cremation Services are packages designed for those wanting memorial services with cremation disposition. These packages provide options for cremation containers.

Services

Funeral Director & Staff Services	\$ 3,200
Transfer into our care	\$ 695
(Sanitary care of Unembalmed & Refrigeration & Dressing/Casketing) Or Ritual Washing	\$ 800
Chapel or graveside service (Additional \$295 for outside facility / offsite services)	\$ 1,000
Private Identification, up to 20 mins for up to 6 attendees	\$ 300
Service Vehicle	\$ 220
Cremation Fee	\$ 495
Service total	\$ 6,710

Premium		Standard		Basic	
Package includes all of the above, plus:		Package includes all of the above, plus:		Package includes all of the above, plus:	
Hadley		Novato		Andura	
Cremation Container	\$1,650	Cremation Container	\$1,430	Alternative Container	\$1,100
Flower Allowance	\$450	Flower Allowance	\$350	Flower Allowance	\$250
Urn Allowance	\$385	Urn Allowance	\$385	Standard utility urn	\$30
Signature Selection	\$600	Signature Selection	\$300		
Total	\$9,795	Total	\$9,175	Total	\$8,090
<i>Discount</i>	\$2,800	<i>Discount</i>	\$2,280	<i>Discount</i>	\$2,095
Package Price	\$6,995	Package Price	\$6,895	Package Price	\$5,995
Package total with Vista reception (\$900) and catering allowance (\$2100)	\$9,995	Package total with Vista reception (\$900) and catering allowance (\$2100)	\$9,895	Package total with Golden Gate/Portola reception (\$400) and catering allowance (\$600)	\$6,995
Price with	\$495	Price with	\$495	Price with	\$495
Travel Protection	\$7,490	Travel Protection	\$7,390	Travel Protection	\$6,490

Funeral vehicle (e.g. hearse) for off-site services additional \$400.00
Additional charges may apply for priority/ rush cremations

**Refunds or credits will not be provided for any package sale goods or services that remain unused by the customer at the time of need.

Non-Ceremonial

Cremation Package

Non-Ceremonial Services are simple packages that include all necessary items for cremation disposition.

Services

Funeral Director & Staff Services	\$ 3,200
Transfer into our care	\$ 695
(Sanitary care of Unembalmed & Refrigeration & Dressing/Casketing) Or Ritual Washing	\$ 800
Private Identification, up to 20 mins for up to 6 attendees	\$ 300
Service Vehicle	\$ 220
Cremation Fee	\$ 495
Service total	\$ 5,710

Premium	Standard	Basic
Package includes all of the above, plus:	Package includes all of the above, plus:	Package includes all of the above, plus:
Andura	Trayview	Heavy Cardboard CB1
Alternative Container \$1,100	Alternative Container \$685	Alternative Container \$115
Urn Allowance \$385	Urn Allowance \$385	Standard utility urn \$30
Total \$7,195	Total \$6,780	Total \$5,855
<i>Discount</i> \$2,200	<i>Discount</i> \$2,185	<i>Discount</i> \$2,560
Package Price \$4,995	Package Price \$4,595	Package Price \$3,295
Price with \$495	Price with \$495	Price with \$495
Travel Protection \$5,490	Travel Protection \$5,090	Travel Protection \$3,790

Funeral vehicle (e.g. hearse) for off-site services additional \$400.00
Additional charges may apply for priority/ rush cremations

**Refunds or credits will not be provided for any package sale goods or services that remain unused by the customer at the time of need.

SKYLAWN MEMORIAL PARK & FUNERAL HOME

Prices subject to change without notice. All Prices effective:

May 20, 2026

GENERAL PRICE LIST

The goods and services shown below are those we can provide to our customers. You may choose only the items you desire. However, any funeral arrangements you select will include a charge for our basic services and overhead. If legal or other requirements mean you must buy any items you did not specifically ask for, we will explain the reason in writing on the statement we provide describing the funeral goods and services you selected. Unless legal or other requirements mean you must buy any items not specifically asked for, you will be charged only for those items you select. There may be extra charges for other items, such as cemetery fees and flowers.

BASIC SERVICES OF THE FUNERAL DIRECTOR, STAFF AND OVERHEAD **\$ 3,200**

This fee for our basic services and overhead will be added to the total cost of the funeral arrangements you select. (This fee is already included in our charges for direct cremations, immediate burials, and forwarding or receiving remains)

This Fee includes but is to limited to the following:

- Staff to respond to the initial request for service 24 hours a day, 365 days a year
- Preparation, securing and filing of necessary permits and certificates
- Ordinary sheltering of the remains
- Conducting the arrangement conference
- Coordinating service plans with cemetery, crematory, vault company and/or
- Clerical assistance in the completion of various forms, placing notices and permits

Also included in this charge are overhead expenses relative to our facility such as insurance, secretarial and administrative expenses, maintenance and utility expenses, equipment and inventory costs, and governmental compliance.

PREPARATION OF THE BODY

Except in certain special cases, embalming is not required by law. Embalming may be necessary, however, if you select certain funeral arrangements, such as a funeral with viewing. If you do not want embalming, you usually have the right to choose an arrangement that does not require you to pay for it, such as direct cremation or immediate burial.

Embalming	\$ 1,250
Use of Preparation Room for Clinical or Ritual Use, up to 3 hours	\$ 800
Sanitary Care, Dressing, and Casketing of Un-Embalmed Remains (no cosmetics)	\$ 800
Restoration	\$ 495
Special care for autopsied cases	\$ 395
Dressing and/or Casketing of Embalmed Remains	\$ 330
Cosmetology and Hairdressing of Embalmed Remains (by staff)	\$ 170
Refrigeration per day after 14th day of use	\$ 55

California law mandates refrigeration for any unembalmed body in our care after 24 hours

USE OF FACILITIES AND STAFF

Use of facilities and staff services for Visitation up to 4 hours (3pm - 7pm) OR up to 2 hours on the same day of the service	\$ 800
<i>Our services include set-up of visitation area, placement of encased remains, display of floral arrangements, supervision of and attendance during the gathering</i>	
Use of facilities and staff for private viewing when remains are not embalmed	\$ 550
<i>Private family viewing for up to 30 minutes for up to 20 attendees in our chapel</i>	
Use of facilities and staff services for Funeral Ceremony in our chapel, up to 2 hours	\$ 1,000
<i>Our services include coordinating the ceremonial arrangements, supervision of the ceremony, and staff to assist with the ceremony</i>	
Use of facilities and staff services for Memorial Service (without remains present) in our chapel, up to 2 hours	\$ 1,000
<i>Our services include coordinating the memorial service arrangements, supervision of the memorial ceremony service, and staff to assist with the ceremony</i>	
Staff Services for Funeral Ceremony at religious facility or other outside facility, up to 3 hours	\$ 1,295
<i>Our services include coordinating the funeral ceremony arrangements, supervision of the funeral ceremony, and staff to assist with the ceremony</i>	
Staff services for Memorial Ceremony (without remains present) at religious facility or other outside facilities, up to 3 hours	\$ 1,295
<i>Our services include coordinating the memorial ceremony arrangements, supervision of the memorial ceremony, and staff to assist with the ceremony</i>	
Staff services for Visitation at religious facility or other outside facilities, up to 3 hours	\$ 1,295
<i>Our services include coordinating the visitation arrangements, supervision of the visitation, and staff to assist with the ceremony</i>	
Equipment and staff services for graveside ceremony, up to 1 hour	\$ 1,000
<i>Our services include accompaniment of remains to cemetery, supervision of graveside ceremony, and staff to assist with the ceremony</i>	

Overnight Use of Facilities and Staff (requires management approval)	\$ 3,000
Additional charge for evening service, per hour	\$ 250
Use of Vista Reception Room without preferred caterer (up to 3 hours or until 5pm; \$250/hr overtime applies thereafter with exception to evening visitation)	\$ 1,200
Use of Vista Reception Room with preferred caterer (up to 3 hours or until 5pm; \$250/hr overtime applies thereafter with exception to evening visitation)	\$ 900
Use of Golden Gate / Portola without preferred caterer (up to 3 hours or until 5pm; \$250/hr overtime applies thereafter with exception to evening visitation)	\$ 600
Use of Golden Gate / Portola with preferred caterer (up to 3 hours or until 5pm; \$250/hr overtime applies thereafter with exception to evening visitation)	\$ 400
Use of Golden Gate Reception Room for light reception, up to 3 hours (during visitation)	\$ 400
Use of Facility for Private Identification, up to 20 mins for up to 6 attendees	\$ 300
Rush fee (disposition within 48 hours of obtaining permit)	\$ 900
Additional charge for Holiday Service	\$ 1,500
Additional charge for Saturday or Sunday	\$ 1,200
Tablecloth rental when using outside caterer	\$ 300

OUTSIDE USE OF FACILITIES AND STAFF - Monday thru Friday

~ When Skylawn Funeral Home has no involvement with care and disposition of remains -

Facilities and staff for funeral or memorial service, up to 2 hours	\$ 2,395
Rental of Vista Reception Room without preferred caterer (up to 3 hours or until 5pm; \$250/hr overtime applies thereafter with exception to evening visitation)	\$ 1,200
Rental of Vista Reception Room with preferred caterer (up to 3 hours or until 5pm; \$250/hr overtime applies thereafter with exception to evening visitation)	\$ 900
Rental of Golden Gate / Portola Rental without preferred caterer (up to 3 hours or until 5pm; \$250/hr overtime applies thereafter with exception to evening visitation)	\$ 600
Rental of Golden Gate / Portola Rental with preferred caterer (up to 3 hours or until 5pm; \$250/hr overtime applies thereafter with exception to evening visitation)	\$ 400

TRANSPORTATION

Within 30 mile radius. Additional mileage will be charged at \$6.00 per mile

Transfer of deceased from place of death to our funeral home	\$ 695
Funeral Coach / Hearse	\$ 400
Flower Transportation	\$ 220
Service Utility vehicle	\$ 220
Transfer of deceased to or from airport	\$ 695
Transfer of deceased to anatomical donation	\$ 695
Additional personnel required for transfer of deceased, per person	\$ 200

FORWARDING REMAINS TO ANOTHER FUNERAL HOME	\$ 3,900
<i>This charge includes removal of remains within 30 miles, basic services of staff, necessary authorizations, embalming, and use of preparation room, dressing and casketing and transportation to local airport or other place of shipment within a 30-mile radius (excluding shipping charges). This charge does not include visitation ceremonies or shipping container. This charge applies to shipment within the continental U.S. only.</i>	
RECEIVING REMAINS FROM ANOTHER FUNERAL HOME	\$ 3,200
<i>This charge includes basic services of staff, transportation from local airport within 30 miles or other shipping destination and transportation of remains to cemetery or crematory within 30 miles. This charge does not include visitation or ceremonies.</i>	
DISINTERMENT	Starting at \$ 3,650
<i>This charge includes the coordination of the disinterment within the same cemetery, or two local cemeteries, (within 30 miles), obtaining necessary authorizations, supervision by a licensed funeral director of the disinterment of the casket and /or outer burial container from the grave and re-interment of the casket /outer burial container, costs of disposing of the casket or outer burial container, transferring of the remains into another casket/outer burial container and excludes the costs of a replacement casket and/or outer burial container. All disinterment's require management's approval.</i>	
DISINURNMENT	\$ 545
DIRECT CREMATION (Range)	\$ 2,880 \$ 36,710
<i>Cremation without formal viewing or ceremony. If you want to arrange a direct cremation, you can use an alternative container. Alternative containers encase the body and can be made of materials like fiberboard or composition materials (with or without an outside covering). The containers we provide are alternative containers and other cremation containers, including containers made of wood, containers made of fiberboard, containers made of cardboard and containers made of other composite materials. Our charges for direct cremation (without ceremony) included basic services of the funeral director and staff, transfer of remains to the funeral establishment, refrigeration and crematory fee. The crematory fee of \$495.00 and standard utility urn \$30 are included. Additional charges may apply for priority/ rush cremations.</i>	
Direct cremation with container provided by the purchaser (All such containers must meet any applicable state or crematory requirements).	\$ 2,880
Direct Cremation with casket from our facility, in addition to cost of casket.	\$ 2,880
Direct Cremation with minimum cardboard alternative container	\$ 2,995
Direct Cremation with cremation on Skylawn Memorial Park contract	\$ 2,385
Skylawn Memorial Park Cremation - Monday through Friday	\$ 495
Additional Charge for Non-Witness Cremation request on a Holiday	\$ 1,500
Additional Charge for Non-Witness Cremation request on Saturday or Sunday	\$ 1,200
Cremation Rush Service - 48 hours turn around, after permit is secured	\$ 900
Relic Collection @ Skylawn Crematory, up to 2 hours	\$ 600
Cremation Reprocessing fee	\$ 495
Priority Non-Witness cremation, Mon thru Fri - family can select time & date of cremation	\$ 395
Additional Charge for Witness Cremation, Mon thru Fri (9am - 1pm)	\$ 600
Additional Charge for Witness Cremation, Sat or Sun (9am - 1pm)	\$ 1,200
Additional Charge for Witness Cremation, Holiday (9am - 1pm)	\$ 1,500
<i>Witness Cremation includes visual identification of decedent, hearse and placement of Cremation Casket or Alternative Container in Cremation Chamber. Attendees allowed to remain in Crematory for up to 30 minutes at the start of cremation.</i>	

IMMEDIATE BURIAL (Range)	\$ 3,200	\$ 37,030
<i>Our charges for immediate burial (without any rites or ceremonies at the funeral home, graveside or elsewhere) include basic services of the funeral director and staff, refrigeration, dressing and casketing, transfer of the remains to funeral establishment, transportation of remains to cemetery.</i>		
Immediate burial with container provided by the purchaser (All such containers must meet any applicable state or cemetery requirements.)		\$ 3,200
Immediate burial with casket selected from our facility, in addition to cost of casket.		\$ 3,200
Immediate burial with minimum casket from our facility - Apollo Silver (\$1,910)		\$ 5,110
Alternative Containers (Range)	\$ 115	\$ 1,100
A complete price list will be provided at the funeral home.		
Caskets (Range)	\$ 1,430	\$ 33,830
A complete price list will be provided at the funeral home.		
Urns (Range)	\$ 30	\$ 4,620
A complete price list will be provided at the funeral home.		
Ceremonial Rental Casket with Insert		\$ 2,425
(Refer to Casket Price List as provided at the funeral home) If you choose a funeral service		
MAILING OF CREMATED REMAINS		\$ 225
This charge includes handling, packaging and mailing of cremated remains with the purchase of an urn from our funeral home that is suitable for mailing, excluding the cost of the urn. Urns with cremated remains will only be mailed via the U.S. Post Office. Once the Post Office takes possession of the cremated remains, the funeral home is released from and assumes no further responsibility or liability for the cremated remains.		

OTHER SERVICES AND MERCHANDISE

Acknowledgement Cards (per 75)	Starting at	\$	180
Air Tray		\$	365
Catered Receptions			As Selected
Combination Shipping Container (<i>Embalmed remains, without casket</i>)		\$	605
Department of Consumer Affairs Fee (Cremation, disposition not at Skylawn)		\$	11.50
Dis-interment Oversight by Licensed Funeral Director / Embalmer		\$	3,650
Dis-inurnment Oversight by Licensed Funeral Director / Embalmer		\$	545
Document Mailing Fee with tracking		\$	85
Foreign Consulate Document Processing			\$900 and up
Memorial Book	Starting at	\$	90
Memory Jewelry			As Selected
Pall Bearer Gloves (6 pairs)		\$	80
Prayer Cards (per 100)		\$	185
Presentation Crucifix		\$	75
Presentation Rosary		\$	70
Service folders (per 100)		\$	240
Ziegler Shipping Case (Unembalmed remains)		\$	905

CHILDREN'S GENERAL PRICE LIST

Children's Casket Price (Range)	\$	455	\$	1,575
Direct Cremation or Immediate Burial Fetal Remains *			\$	500
Direct Cremation or Immediate Burial Infant (up to one year of age) *			\$	600
Burial or Cremation: Child 0 - 4 years of age *				75% off GPL
Child 5 - 10 years of age *				50% off GPL
Child 11 - 18 years of age *				25% off GPL

**Pricing is for services only. Cremations include a simple cardboard cremation container and plastic temporary urn. Cash Advance Items and Additional Merchandise will not be discounted.*

SIGNATURE SERVICES

Videographer, up to 2 hours	\$ 1,500
Charge for Holiday Service	\$ 1,500
Cremation request on a Holiday	\$ 1,500
Asian Burning Package: Deluxe (One House, Two Servants, One Car with Driver, One Joss Stick, One Bundle Passover Money, One Bundle Gold/Silver, Two Bundles American Money, One Bundle Large Paper, One Bundle Incense, One Bundle Kai Chin, One Passport to Burn, One Passport for Hands, One Large Red Envelope, One Small Red/White Envelope)	\$ 1,200
Charge for Saturday or Sunday service	\$ 1,200
Cremation request on Saturday or Sunday	\$ 1,200
Witness Cremation, Sat or Sun (9am-1pm)	\$ 1,200
Use of Vista Reception Room, up to 3 hours when not using Skylawn preferred caterer	\$ 1,200
Dove Release - 12 Doves	\$ 900
Bag Piper, Harpist, or Vocalist	\$ 900
Memorial Stationary Package: Premium (200 Service Folders, Deluxe Guest Book, 150 Acknowledgement Cards, 100 Prayer Cards)	\$ 900
Use of Vista Reception Room, up to 3 hours when using Skylawn preferred caterer	\$ 900
Rush fee (disposition within 48 hours of obtaining permit)	\$ 900
Cremation Expediting Fee (cremation within 48 hours of obtaining permit)	\$ 900
Framed Memorial Portrait on Canvas	\$ 600
Thumbprint Pendant	\$ 600
Cherry Wood Memory Box	\$ 600
Asian Burning Package: Basic (One Bundle Passover Money, One Bundle Gold/Silver, Two Bundles American Money, One Bundle Large Paper, One Bundle Incense, One Bundle Kai Chin, One Passport to Burn, One Passport for Hands)	\$ 600
Longevity Blankets (7 Blankets)	\$ 600
Memorial Stationary Package: Standard (100 Service Folders, Deluxe Guest Book, 75 Acknowledgement Cards, 100 Prayer Cards)	\$ 600
Witness Cremation, Mon thru Fri (9am - 1pm)	\$ 600
Memorial Slideshow (up to 50 Photos)	\$ 300
Victory Flag Case	\$ 300
Catholic Traditional Package (100 prayer cards, rosary and crucifix)	\$ 300
Jewish Traditional Package	\$ 300
Pall Bearer Package (Pallbearer gloves, Boutonnieres and Ties)	\$ 300
Coffee & Tea Service	\$ 300
Memorial Stationary Package: Basic (100 Service Folders, Standard Guest Book, 75 Acknowledgement Cards)	\$ 300
Longevity Blankets (3 Blankets)	\$ 300

Casket Price List

Prices effective

May 20, 2026

Subject to change without notice.

Disclaimer of Warranties

Skylawn Funeral Home makes no representations or warranties about the protective value of the caskets listed herein other than those expressly extended by manufacturers. The only warranties, expressed or implied, granted in connection with caskets sold are the express written warranties, if any extended by the manufacturer thereof. Skylawn Funeral Home hereby expressly disclaims all warranties, expressed or implied relating to the caskets, including, but not limited to the implied warranties of merchantability and fitness for a particular purpose.

THERE IS NO EVIDENCE THAT ANY CASKET REPRESENTED AS HAVING PROTECTIVE FEATURES, WHICH MAY INCLUDE A GASKET, WILL PRESERVE HUMAN REMAINS.

These are the caskets that according to section 1258.1(e) that are regularly offered for sale. Although you may find caskets represented photographically or physically within our facility that are not on this list, those caskets are strictly special order and not regularly offered for sale and are therefore excluded from the 1258.1(e) requirements. We can give you a price for those caskets, if so desired based on our pricing structure of similar models. If there is a conflict of pricing between the Casket Price List and the price indicated on the casket or picture, the lower of the two prices is what you will be charged.

WOOD CASKETS by Batesville Casket Company

8SS 815 LH MONTRACHET MAHOGANY - Solid Mahogany, Champagne Velvet	148243	\$	33,830
710 PRESIDENT FULL TOP - Solid Mahogany - Dark, Silverbeige Velvet, Wood Bed	209436	\$	25,000
710 PRESIDENT CUT TOP - Solid Mahogany - Dark, Silverbeige Velvet	202149	\$	25,000
8PM 699 IHD PREMIER FULL TOP - Solid Mahogany, Champagne Velvet, Wood Bed	148244	\$	21,550
8X5 833 HD IMPERIAL - Solid Mahogany, Champagne Velvet	148247	\$	19,150
8PM 899 IHD PREMIER - Solid Mahogany, Champagne Velvet	148245	\$	19,015
7V3 828 HD PEARSON CHERRY - Cherry Veneer Dark, Champagne Velvet	202512	\$	13,888
SC-W9001-R ETERNITY RED - Solid African Mahogany, Dark Finish, Burgundy Velvet	CAWMA1XADB	\$	13,888
SC-W9001 ETERNITY - Solid African Mahogany, Dark Finish, Pearl Beige Velvet	CAWMA1XADP	\$	13,888
3V8 825 HD SACRAMENT MAPLE - Maple Veneer Dark, Champagne Velvet	205164	\$	11,885
4F6 861 HD CAMEO - Solid Hardwood, Moss Pink Velvet	146862	\$	10,720
7NC 828 EMBASSY CHERRY - Solid Cherry Dark, Champagne Velvet	148222	\$	10,110
7PM 865 HD PEMBROKE CHERRY - Cherry Solid, Champagne Velvet	148227	\$	10,110
3Q9 892 LH PROVINCIAL MAPLE - Maple Solid, Champagne Velvet	148191	\$	10,110
2V1 880 HD WOODHAVEN PECAN - Pecan Veneer, Medium, Champagne Velvet	205162	\$	8,940
410 SYRACUSE CUT TOP - Select Hardwood Solid, Champagne Velvet	275548	\$	8,940
495 8 J3 H BRANSON - Select Hardwood Veneer, Medium, Woven Saffron	246736	\$	8,680
495 825 CH BAILEY - Select Hardwood Veneer, Khaki Linwood	263781	\$	7,705
468 847 D LYNX LIGHT BROWN - Wood Veneer, Rosetan Crepe	257923	\$	6,380
427 880 D LIBRA HARVEST BROWN - Wood Veneer Dark, Rosetan Crepe	241727	\$	6,245
461 H HW UNFINISHED 041M - Solid Hardwood Light, Ivory Crepe	148097	\$	5,115
847 D LYRA NATURAL - Veneer Light, Rosetan Crepe	269150	\$	3,825
847 D LYRA BROWN - Veneer Dark, Rosetan Crepe	269152	\$	3,825
AC1 8J5 UDH DELRAY - Select Hardwood, Rosetan Crepe	146853	\$	2,875

METAL CASKETS by Batesville Casket Company

Z64 824 DH CLASSIC GOLD - 48 Oz Bronze, Gasketed, Champagne Velvet	147959	\$	28,875
Z64 899 IDH VENETIAN BRONZE - 48 Oz Bronze, Gasketed, Champagne Velvet	147961	\$	25,000
U46 844 NDH TAPESTRY ROSE - Basic Stainless Steel, Gasketed, Moss Pink Velvet	147901	\$	13,888
Y39 884 IDH AEGEAN COPPER - 32 Oz Copper, Gasketed, Champagne Velvet	147935	\$	13,888
GOLDEN PEARL - 18 Gauge Steel, Gasketed, Eggshell Velvet	185489	\$	13,888
J35 825 D TOPAZ - 18 Gauge Steel, Gasketed, Champagne Velvet	147823	\$	11,885
C47 802 NDH SILVER ROSE - 18 Gauge Steel, Gasketed, Natural Velvet	147765	\$	11,770
J59 825 CDH GOLDEN MIDNIGHT - 18 Gauge Steel, Gasketed, Champagne Velvet	185487	\$	11,770
UG1 828 CDH SILVER SAPPHIRE - Basic Stainless Steel, Gasketed, Silver Velvet	185491	\$	10,720
P90 8J3 UDH STAR QUARTZ - 18 Gauge Steel, Gasketed, Champagne Velvet	246186	\$	10,620
UG1 828 CDH GOLDEN SAND - Basic Stainless Steel - Gold Gasketed, Silver Velvet	185493	\$	10,620
N01 8BG H MIDNIGHT GOLD - 18 Gauge Steel, Gasketed, Black with Gold Trim Velvet	279142	\$	8,940
U04 872 DH BLUE MIST - 18 Gauge Steel, Gasketed, Medium Weight, Blue with Silver Trim	147903	\$	8,855
OT9 8LT DH IVORY - 18 Gauge Steel, Gasketed, Medium Weight, Ivory Velvet	255453	\$	8,090
NL1 8K3 H CLARET - 18 Gauge Steel - Red, Gasketed, Medium Weight, Woven Ivory	251960	\$	7,705
NL1 8K3 H INDIGO BLUE - 18 Gauge Steel- Blue, Gasketed, Medium Weight, Woven Ivory	251972	\$	7,705
OC1 8K3 UH FINCH - 18 Gauge Steel- Light Blue, Gasketed, Medium Weight, Woven Ivory	280218	\$	7,705
OC1 8K3 UH CARNATION - 18 Gauge Steel- White, Gasketed, Medium Weight, Woven Ivory	280219	\$	7,705
N01 8K3 CDH MERLOT - 18 Gauge Steel, Gasketed, Medium Weight, Rosetan Crepe	239723	\$	7,705
O61 8J6 HDH BURNISHED SILVER - 18 Gauge Steel, Gasketed, Medium Weight, Champagne Velvet	273553	\$	7,705
Q98 847 A EMERALDTONE - 20 Gauge Steel, Non-Gasketed, Ivory Crepe	279864	\$	5,315
Q02 805 A EARTHTONE - 20 Gauge Steel, Non-Gasketed, Rosetan Crepe	148028	\$	5,115

METAL CASKETS by Batesville Casket Company (continued)

QA2 809 A IVORY GOLD - 20 Gauge Steel, Gasketed, Ivory Crepe	148040	\$	4,985
8N1 D ARGO ORCHID - 20 Gauge Steel-Orchid, Gasketed, Moss Pink Crepe	278912	\$	4,865
8N1 D ARGO SILVER - 20 Gauge Steel-Silver, Gasketed, Ivory Crepe	278920	\$	4,865
QD2 8F3 A PISCES WHITE - 20 Gauge Steel-White, Gasketed, Ivory Crepe	257953	\$	4,865
8N1 D ARGO SAND - 20 Gauge Steel-Gold, Gasketed, Ivory Crepe	278921	\$	4,865
CM2 8N1 A SPECTRA SILVER - 20 Gauge Steel, Non-Gasketed, Ivory Crepe	221507	\$	2,875
CM2 8N1 A SPECTRA WHITE - 20 Gauge Steel, Non-Gasketed, Ivory Crepe	223045	\$	2,875
CM2 8N1 A SPECTRA BLACK - 20 Gauge Steel, Non-Gasketed, Silver Crepe	256354	\$	2,875
CM2 8N1 A SPECTRA BLUE - 20 Gauge Steel, Non-Gasketed, Light Blue Crepe	221506	\$	2,875
CM1 8F2 A APOLLO SILVER - 20 Gauge Steel, Non-Gasketed, Ivory Crepe	221502	\$	1,910

CEREMONIAL RENTAL CASKET

BROCKTON Ceremonial Rental Casket with Insert - Oak Solid / Rosetan Crepe (SRVRCBRK / 248337)		\$	2,425
<i>(Rental Insert \$420+ tax plus Rental Unit \$2,005)</i>			
BECKHAM Ceremonial Rental Casket with Insert - Cherry Solid/Champagne Velvet (SRVRCBKH / 248337)		\$	2,425
<i>(Rental Insert \$420+ tax plus Rental Unit \$2,005)</i>			

ALTERNATIVE CONTAINERS

ANDURA - Cardboard-Grey, Ivory Crepe Interior	279179	\$	1,100
TRAYVIEW - Cardboard-Brown, Fabric Interior not available	242414	\$	685
HEAVY CARDBOARD CB1- Corrugated Cardboard - no interior	ALCCTNR	\$	115

CREMATION ORIENTED CONTAINERS

GREY DOESKIN OVAL CUT TOP - Cloth Covered Fiberboard, Ivory Crepe	147970	\$	1,715
HADLEY CREMATION CONTAINER - Wood Composite (MDF), Ivory Crepe	279185	\$	1,650
NOVATO CREMATION CONTAINER - Wood Composite (MDF), Ivory Crepe	279183	\$	1,430

CHILDREN'S CASKETS

WHITE SHADED GOLD FINISH, WHITE CREPE INTERIOR 71005841			
4'6" ANGELIC INFANT/YOUTH FIBER BOARD CLOTH COVERED	CCLTH0Y803	\$	1,475
WHITE EXTERIOR, IVORY CREPE INTERIOR 70000695			
3'6" ANGELIC INFANT/YOUTH FIBER BOARD CLOTH COVERED	CCLTH0Y036	\$	1,360
WHITE EXTERIOR, IVORY CREPE INTERIOR 70000726			
2'6" ANGELIC INFANT/YOUTH FIBER BOARD CLOTH COVERED	CCLTH3M026	\$	790
WHITE EXTERIOR, IVORY CREPE INTERIOR 70000725			
24" ANGELIC INFANT FIBER BOARD CLOTH COVERED	CCLTH0M020	\$	680
WHITE EXTERIOR, IVORY CREPE INTERIOR 70000724			
20" ANGELIC INFANT FIBER BOARD CLOTH COVERED	CCLTH0M018	\$	455
WHITE EXTERIOR, IVORY CREPE INTERIOR 70000723			

CASKET VAULT COMBO

31" Loved and Cherished Infant Casket	CM0000WL31	\$	1,575
24" Loved and Cherished Infant Casket	CM0000WL24	\$	1,035
19" Loved and Cherished Infant Casket	CM0000WL19	\$	730

Our History

Skylawn is perched atop the Montara mountain range on the San Francisco Peninsula between the San Francisco Bay and the Pacific Ocean. The park's 505 acres are surrounded by a nature preserve, and home to an abundance of wildlife including: deer, bobcat, racoon, skunk, fox, cougar, and many others. The unique location within the nature preserve ensures Skylawn's vast beauty will remain unspoiled for generations.

Designed by noted San Francisco landscape architects French and Jones, Skylawn Memorial Park opened October 1, 1959. Inside the park are architecturally significant structures, beautifully landscaped gardens, unobstructed views of the Bay and the Pacific, and a wealth of history. Architect Aaron Green designed the prominent Mausoleum in the Sky. Green was the West Coast representative of renowned architect Frank Lloyd Wright. Green also designed the entrance to Gan Hazikaron, a Jewish garden within Skylawn. There are also two remarkable Chinese gardens developed to the exact specifications of international Feng Shui masters. The triple gate at the top of Bai Ling Yuan II Plaza offers the perfect orientation, gazing down the canyon to the Pacific Ocean, the gates protected by two mythical lions believed to guard against bad influences and evil spirits.

In 2008, Skylawn opened a state of the art funeral home. The building is expansive and welcoming with bright, spacious visitation rooms, two large elegant chapels and comfortable arrangement rooms. The funeral home also features an exceptional reception area. The Vista room has an outdoor patio and floor-to-ceiling windows opening to a picturesque waterfall and rock garden — a beautiful setting in which to celebrate the life of a loved one.

Skylawn added a 26-acre development called Skyview in 2016, complete with open views of the surrounding nature preserve and the Pacific Ocean. Several gardens make up Skyview, with a wide variety of interment options. The Lotus Garden within Skyview is aptly named for the quarter mile of cascading streams and waterfalls that form the petals of a Lotus flower. This garden contains premium estates, and a mix of ground burial and custom cremation options throughout. Garden of the Saints is also situated within Skyview offering double depth lawn crypts, and hosting a beautiful columbarium adorned with a statue of Our Lady Guadalupe.

Skylawn Funeral Home & Memorial Park is a premier full-service facility for the Bay Area and beyond, offering the one-stop convenience of a funeral home, cemetery and on-site crematory. Having provided exceptional service for over 60 years, we're proud of the reputation we've built on quality, sincerity, and trust; with services that celebrate the life of each individual and respect the wishes of every family. Skylawn is truly a "place like no other".

Notes