

General Price List

Prices effective:
February 18, 2025
Subject to change without notice.



Resthaven Funeral Home & Crematory, Inc. | 9501 Catocin Mnt, Frederick, MD 21701 | 301-898-1577

www.resthaven.us



Resthaven

Funeral Home & Crematory, Inc.
at Resthaven Memorial Gardens

It is our promise to meet or beat any local funeral home's published price for services and merchandise.

COMPLETE FUNERAL PACKAGES

To help make funeral planning easier for you, we offer several funeral and cremation and packages. These packages provide you with a wide range of selections, options and prices at an incredible value. Most importantly, they allow you to spend more time personalizing the ceremony as you celebrate the life of the person you are honoring. Many of the packages are designed to provide a complete funeral ceremony, including both the professional services and the necessary merchandise.

OUR PAYMENT POLICY

To lose someone you love can be a devastating experience. It is frequently traumatic and can seriously impact judgment. We believe in the importance of the recognition and meaningful celebration of a life that has been lived and will assist in arranging an appropriate service to meet your individual needs. It is also important to be realistic in respect to funeral expenditures. We do not want a family to spend more than they should, nor less than they would like. What is important is that the arrangements be in keeping with the family's wishes and budget.

PREPLANNING ASSISTANCE

We provide free assistance and consultations with end-of-life planning. When you choose to preplan, you lock in today's prices and relieve your loved ones from the financial and emotional burden of making difficult decisions and paying for services at the time of need.

Our staff is committed to your complete satisfaction. We pride ourselves on the quality of our service and our dedication to the community. We will answer your questions in a clear and understandable manner, and ensure the arrangements you make meet your individual wishes. We will explain the value and benefit of all available options, and take the time to explain prices and payment methods to your satisfaction.

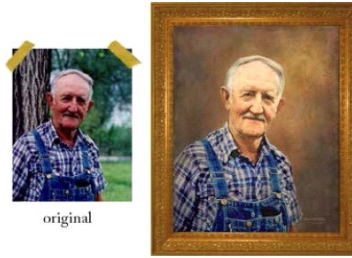
Thank you for placing your trust and confidence in our staff.



*Signature Services*SM

Signature ServicesSM are more than an addition to a service, they are a personal and meaningful element that brings a special touch to the day's events. From a memorial slideshow to a personalized woven blanket, these selections add a powerful feeling that brings everyone together.

All Signature Services are available as part of memorial packages as individual additions to memorial services.



Memorial Slideshow

Turn your photos into a powerful video tribute slideshow Using your family's photos and video clips, let us create a lasting digital keepsake. Package includes 2 DVDs.

Framed Portrait

Use your favorite photo to create a focal point in your service. Available as a single photo portrait, or a collage using up to 4 photos. Make this a special and unique piece with your choice of a custom frame, many color and design options.

Flag Case

This Wooden Flag case proudly displays a Veterans Flag in all its proper glory Meticulously crafted, it is truly a stunning and safe way to keep the your loved one's honor alive.



Woven Photo Blanket

Create a special piece that you can wrap yourself in for years to come. Use your favorite photo, or let us create a collage of photos and elements that will make this blanket an incredible comfort.

Webcasting Service

Give the opportunity for friends and family at home to view the funeral services in real time. We will create a link that can be shared through social media, text and email. these notes a lasting tribute.

Legacy Fingerprint Jewelry

Custom Jewelry using the fingerprint of your loved one or a special image to remember Jewelry includes the pendant and chain 1n Sterling Silver.



Urn Ark

Using an Urn Ark is an elegant way of transporting an urn to and from a service or graveside and displaying memorial items, photos and special tributes. The Urn Ark may also be loaded in to a Hearse or Funeral Vehicle for a full burial experience.

Video Book

The Video Book is a more modern keepsake for the family. The Video Book can sit on the coffee table, shelf, or nightstand, and the video plays the moment it is opened.

Memory Glass

All our glass memorials are handcrafted, using top quality crystal glass. They incorporate a small amount of cremation ashes, allowing you to scatter, bury, or store the remainder in traditional memorial urns and keepsake urns

Funeral Packages

Designed to make your selections easy while meeting the needs of your family, our Funeral Packages contain all the items necessary for your services.



SafelyHome
ProtectionSM

SafelyHomeSM Protection Plan coordinates and expertly manages every complicated, stressful and costly detail involved in the preparation for transport back home from

Elite

Funeral Package

Services

Funeral director and staff services	\$ 2,795
Transfer into our care	\$ 695
Embalming	\$ 795
Dressing & Casketing	\$ 295
Visitation	\$ 595
Funeral Ceremony	\$ 695
Funeral Coach	\$ 395
Service Vehicle	\$ 95

Merchandise

Casket Selection	\$ 12,495
Silver Sapphire	Tapestry Rose
Golden Sand	Woodbridge Pecan

Service Items

Standard register book package	\$ 200
Flower allowance	\$ 600
5 Signature Services Selections	\$ 1,500
Catering Allowance	\$ 1,060

Total	\$22,215
Discount	\$ 1,500
Package Price	\$20,715

SafelyHome
ProtectionSM

Package Price with SafelyHomeSM Protection

\$21,210

*Refunds or credits will not be provided for any package sale goods or services that remain unused by the customer at the time of need.

Custom

Funeral Package

Services

Funeral director and staff services			\$ 2,795
Transfer into our care			\$ 695
Embalming			\$ 795
Dressing & Casketing			\$ 295
Visitation			\$ 595
Funeral Ceremony			\$ 695
Funeral Coach			\$ 395
Service Vehicle			\$ 95

Merchandise

Casket Selection			
	Pembroke Cherry	Tapestry Rose	\$ 7,070
	Provincial Maple	Silver Sapphire	

Service Items

Standard register book package			\$ 200
Flower allowance			\$ 340
4 Signature Services Selections			\$ 1,200
Catering Allowance			\$ 1,060

Total			\$16,230
Discount			\$1,200
Package Price			\$15,030

SafelyHome
ProtectionSM

Package Price with SafelyHomeSM Protection

\$15,525

*Refunds or credits will not be provided for any package sale goods or services that remain unused by the customer at the time of need.

Premium

Funeral Package

Services

Funeral director and staff services	\$ 2,795
Transfer into our care	\$ 695
Embalming	\$ 795
Dressing & Casketing	\$ 295
Visitation	\$ 595
Funeral Ceremony	\$ 695
Funeral Coach	\$ 395
Service Vehicle	\$ 95

Merchandise

Casket Selection	\$ 4,605
Weston Veneer	Finley Pin
Onyx	Primrose

Service Items

Standard register book package	\$ 200
Flower allowance	\$ 460
Signature Services Selections	\$ 900
Catering Allowance	\$ 1,060

Total	\$13,585
Discount	\$900
Package Price	\$12,685

SafelyHome
ProtectionSM

Package Price with SafelyHomeSM Protection

\$13,180

*Refunds or credits will not be provided for any package sale goods or services that remain unused by the customer at the time of need.

Standard

Funeral Package

Services

Funeral director and staff services	\$ 2,795
Transfer into our care	\$ 695
Embalming	\$ 795
Dressing & Casketing	\$ 295
Visitation	\$ 595
Funeral Ceremony	\$ 695
Funeral Coach	\$ 395
Service Vehicle	\$ 95

Merchandise

Casket Selection	\$ 3,950
Neapolitan M39 S41 Silver Ebony	

Service Items

Standard register book package	\$ 200
Flower allowance	\$ 430
Signature Services Selections	\$ 600
Catering Allowance	\$ 1,060

Total	\$12,600
Discount	\$600
Package Price	\$12,000

SafelyHome
ProtectionSM

Package Price with SafelyHomeSM Protection

\$12,495

*Refunds or credits will not be provided for any package sale goods or services that remain unused by the customer at the time of need.

Basic

Funeral Package

Services

Funeral director and staff services	\$ 2,795
Transfer into our care	\$ 695
Embalming	\$ 795
Dressing & Casketing	\$ 295
Visitation	\$ 595
Funeral Ceremony	\$ 695
Funeral Coach	\$ 395
Service Vehicle	\$ 95

Merchandise

Casket Selection	\$ 3,075
Apollo	Lyra Light
Libra Light Brown	

Service Items

Standard register book package	\$ 200
Flower allowance	\$ 340
Signature Services Selections	\$ 300
Catering Allowance	\$ 1,060

Total	\$11,335
Discount	\$300
Package Price	\$11,035

SafelyHome
ProtectionSM

Package Price with SafelyHomeSM Protection

\$11,530

*Refunds or credits will not be provided for any package sale goods or services that remain unused by the customer at the time of need.

Cremation Packages

Designed to make your selections easy while meeting the needs of your family, our Cremation Packages contain all the items necessary for your services.



SafelyHome
ProtectionSM

SafelyHomeSM Protection Plan coordinates and expertly manages every complicated, stressful and costly detail involved in the preparation for transport back home from

Simple Ceremonial

Cremation Packages

Ceremonial Cremation Services are inclusive packages designed for those wanting a visitation or memorial services. With options for cremation caskets, these packages set the stage for a complete memorialization service including Signature ServicesSM.

Each Package contains the following Service, Facility and Equipment Items \$ 5,965 Value

Funeral Director & Staff Services	Service Vehicle
Transfer into our care	Service in our chapel
Embalming	Cremation Fee
Dressing & Casketing	

Premium	Standard	Basic
Package includes all of the above, plus:	Package includes all of the above, plus:	Package includes all of the above, plus:
Libra Light	Lyra Casket	Brockton Rental
Brown Casket \$3,075	Casket \$3,075	Casket & Insert \$1,940
Urn Allowance \$298	Urn Allowance \$253	Urn Urn Allowance \$197
Flower Allowance \$280	Flower Allowance \$240	Flov Flower Allowance \$190
Memorial Package \$200	Memorial Package \$200	Mer Memorial Package \$200
Catering Allowance \$1,060	Catering Allowance \$1,060	Cat Catering Allowance \$1,060
Signature Selection \$900 <i>(Choice of 3)</i>	Signature Selection \$600 <i>(Choice of 2)</i>	Signature Selection \$300 <i>(Choice of 1)</i>
Total \$11,778	Total \$11,393	Total \$9,852
<i>Discount</i> <i>\$900</i>	<i>Discount</i> <i>\$600</i>	<i>Discount</i> <i>\$300</i>
Package Price \$10,878	Package Price \$10,793	Package Price \$9,552
Price with \$495 Travel Protection \$11,373	Price with \$495 Travel Protection \$11,288	Price with \$495 Travel Protection \$10,047

*Funeral vehicle (e.g. hearse) for off-site services additional \$300.00

**Refunds or credits will not be provided for any package sale goods or services that remain unused by the customer at the time of need.

Simple Memorial

Cremation Packages

Memorial Cremation Services are packages designed for those wanting memorial services with cremation disposition. These packages provide options for cremation containers as well as included Signature ServicesSM.

Each Package contains the following Service, Facility and Equipment Items \$ 3,935 Value

Funeral Director & Staff Services	Transfer into our care
Cremation Fee	Memorial Service
Service Vehicle	Preparation for Identification

Premium	Standard	Basic
Package includes all of the above, plus:	Package includes all of the above, plus:	Package includes all of the above, plus:
Pacific Pine	Caden	Trayview
Cremation Casket \$1,595	Cremation Container \$525	Cremation Container \$420
Urn Allowance \$298	Urn Allowance \$253	Urn Urn Allowance \$197
Flower Allowance \$280	Flower Allowance \$240	Flov Flower Allowance \$190
Memorial Package \$200	Memorial Package \$200	Mei Memorial Package \$200
Catering Allowance \$1,060	Catering Allowance \$1,060	Cat Catering Allowance \$0
Signature Selection \$900 <i>(Choice of 3)</i>	Signature Selection \$600 <i>(Choice of 2)</i>	Signature Selection \$300 <i>(Choice of 1)</i>
Total \$8,268	Total \$6,813	Total \$5,242
<i>Discount</i> <i>\$900</i>	<i>Discount</i> <i>\$600</i>	<i>Discount</i> <i>\$300</i>
Package Price \$7,368	Package Price \$6,213	Package Price \$4,942
Price with Travel Protection \$495 \$7,863	Price with Travel Protection \$495 \$6,708	Price with Travel Protection \$495 \$5,437

**Refunds or credits will not be provided for any package sale goods or services that remain unused by the customer at the time of need.

Non-Ceremonial

Cremation Packages

Non-Ceremonial Services are simple packages that include all necessary items for cremation disposition.

Each Package contains the following Service, Facility and Equipment Items \$ **3,340** Value

Limited Services of Funeral Director & Staff Cremation Fee
 Transfer into our care Service Vehicle
 Preparation for Cremation

Premium	Standard	Basic
Package includes all of the above, plus:	Package includes all of the above, plus:	Package includes all of the above, plus:
Caden	Trayview	Basic
Cremation Container \$525	Cremation Container \$420	Cremation Container \$155
Urn Allowance \$298	Urn Allowance \$253	Urn Allowance \$197
Private Family Moment \$595	Private Family Moment \$595	
Signature Selection \$300	Signature Selection \$300	Signature Selection \$300
<i>(Choice of 1)</i>	<i>(Choice of 1)</i>	<i>(Choice of 1)</i>
Total \$5,058	Total \$4,908	Total \$3,992
<i>Discount</i> \$300	<i>Discount</i> \$300	<i>Discount</i> \$150
Package Price \$4,758	Package Price \$4,608	Package Price \$3,842
Price with Travel Protection \$495 \$5,253	Price with Travel Protection \$495 \$5,103	Price with Travel Protection \$495 \$4,337

**Refunds or credits will not be provided for any package sale goods or services that remain unused by the customer at the time of need.

RESTHAVEN FUNERAL HOME & CREMATORY
Prices subject to change without notice. All Prices effective:
2/18/2025

GENERAL PRICE LIST

The goods and services shown below are those we can provide to our customers. You may choose only the items you desire. However, any funeral arrangements you select will include a charge for our basic services and overhead. If legal or other requirements mean you must buy any items you did not specifically ask for, we will explain the reason in writing on the statement we provide describing the funeral goods and services you selected. Unless legal or other requirements mean you must buy any items not specifically asked for, you will be charged only for those items you select. There may be extra charges for other items, such as cemetery fees and flowers

BASIC SERVICES OF THE FUNERAL DIRECTOR, STAFF AND OVERHEAD **\$2,795**

This fee for our basic services and overhead will be added to the total cost of the funeral arrangements you select. (This fee is already included in our charges for direct cremations, immediate burials, and forwarding or receiving remains)

This Fee includes but is to limited to the following:

- Staff to respond to the initial request for service 24 hours a day, 365 days a year
- Preparation, securing and filing of necessary permits and
- Ordinary sheltering of the remains
- Conducting the arrangement conference
- Coordinating service plans with cemetery, crematory, vault company and/or other parties involved in the final disposition of the deceased
- Clerical assistance in the completion of various forms, placing notices and permits associated with a funeral

Also included in this charge are overhead expenses relative to our facility such as insurance, secretarial and administrative expenses, maintenance and utility expenses, equipment and inventory costs, and governmental compliance.

PREPARATION OF THE BODY

Except in certain special cases, embalming is not required by law. Embalming may be necessary, however, if you select certain funeral arrangements, such as a funeral with viewing. If you do not want embalming, you

Embalming	\$795
Other Preparation of the Body:	
Dressing, casketing and/or cosmetizing of deceased	\$295
Bathing and handling of the deceased	\$240
Special care for autopsied cases	\$100
Refrigeration - up to 7 days after our firm takes remains into our care	\$95
<i>It is the policy of our firm to require refrigeration of unembalmed remains 24 hour after death</i>	
Custodial care of the remains per day or part thereof	\$175
<i>This fee applies to embalmed and unembalmed remains and will be charged beginning on the 8th day our facilities are used to shelter the remains.</i>	
Sanitary Care - Unembalmed-Topical Disinfectant, and Care	\$240

USE OF FACILITIES AND STAFF

Use of facilities and staff services for gathering of family and friends, with or without viewing for two hours <i>(Our services include set-up of gathering area, placement of encased remains, display of floral arrangements, supervision of and attendance during the gathering)</i>	\$ 455
Use of facilities and staff services for visitation, per day <i>(Our services include set-up of gathering area, placement of encased remains, display of floral arrangements, supervision of and attendance during the gathering)</i>	\$ 595
Use of facilities and staff services for funeral ceremony in our chapel <i>(Our services include coordinating the ceremonial arrangements, supervision of the ceremony, and staff to assist with the ceremony)</i>	\$ 695
Use of facilities and staff services for memorial ceremony(without remains present) <i>(Our services include coordinating the memorial ceremony arrangements, supervision of the memorial ceremony service, and staff to assist with the ceremony)</i>	\$ 595
Staff Services for funeral ceremony at religious facility <i>(services include coordinating the funeral ceremony arrangements, supervision of the funeral ceremony, and staff to assist with the ceremony)</i>	\$ 695
Staff services for memorial ceremony (without remains present) at other facilities <i>(Our services include coordinating the memorial ceremony arrangements, supervision of the memorial ceremony, and staff to assist with the ceremony)</i>	\$ 595
Equipment and staff services for graveside ceremony <i>(Our services include accompaniment of remains to cemetery, supervision of graveside ceremony, and staff to assist with the ceremony)</i>	\$ 595
Use of facilities and staff services for memorial service or (without remains present) <i>(Our services include coordinating the memorial service arrangements, supervision of the memorial service, display of floral arrangements and staff to assist with the service)</i>	\$ 1,195

OTHER USE OF FACILITIES AND STAFF

Exclusive use of Facilities (per day)	\$ 1,995
Reception Room (per day)	\$ 995
Identification viewing / witness cremation	\$ 595
Witness Cremation	\$ 195

TRANSPORTATION

Transfer of deceased from place of death to funeral home	\$ 695
<i>Within 35 mile radius. Additional mileage will be charged at \$6.00 per mile</i>	
Funeral vehicle (e.g. hearse)	\$ 395
<i>Within 35 mile radius. Additional mileage will be charged at \$6.00 per mile</i>	
Limousine	\$ 895
<i>Within 35 mile radius. Additional mileage will be charged at \$6.00 per mile</i>	
Service vehicle	\$ 95
<i>Within 35 mile radius. Additional mileage will be charged at \$6.00 per mile</i>	
Transfer to or from airport	\$ 495
<i>Within 35 mile radius. Additional mileage will be charged at \$6.00 per mile</i>	
Transfer to anatomical donation	\$ 395
Transfer of Deceased from funeral home to place of autopsy and back to funeral home	\$ 195

FORWARDING REMAINS TO ANOTHER FUNERAL HOME \$ 5,115

This charge includes removal of remains within 35 miles, basic services of staff, necessary authorizations, embalming, and use of preparation room, dressing and casketing and transportation to local airport or other place of shipment within a 35-mile radius (excluding shipping charges). This charge does not include visitation ceremonies or shipping container. This charge applies to shipment within the continental U.S. only.

RECEIVING REMAINS FROM ANOTHER FUNERAL HOME \$ 3,385

This charge includes basic services of staff, transportation from local airport within 35 miles or other shipping destination and transportation of remains to cemetery or crematory within 35 miles. This charge does not include visitation or ceremonies.

DISINTERMENT Starting at \$ 5,595

This charge includes the coordination of the disinterment within the same cemetery, or two local cemeteries, (within 35 miles), obtaining necessary authorizations, supervision by a licensed funeral director of the disinterment of the casket and /or outer burial container from the grave and re-interment of the casket /outer burial container, costs of disposing of the casket or outer burial container, transferring of the remains into another casket/outer burial container and excludes the costs of a replacement casket and/or outer burial container. All disinterment's require management's approval.

DIRECT CREMATION (Range) \$3,340 \$6,415

Cremation without formal viewing or ceremony. If you want to arrange a direct cremation, you can use an alternative container. Alternative containers encase the body and can be made of materials like fiberboard or composition materials (with or without an outside covering). The containers we provide are alternative containers and other cremation containers, including containers made of wood, containers made of fiberboard, containers made of cardboard and containers made of other composite materials. Our charges for direct cremation (without ceremony) included basic services of the funeral director and staff, transfer of remains to the funeral establishment, refrigeration, and crematory fee. The crematory fee of \$650.00 is included.

DIRECT CREMATION (Continued)

Direct cremation with container provided by the purchaser (All such containers must meet any applicable state or crematory requirements).	\$ 3,340
Direct Cremation with minimum cardboard alternative container	\$ 3,495
Direct Cremation with Trayview Alternative Container (As described on the Casket Price List)	\$ 3,760
Direct Cremation with Caden Alternative Container (As described on the Casket Price List)	\$ 3,865
Direct Cremation with casket from our facility (in addition to cost of the casket)	\$ 5,090
Family Present/Witness Cremation-Funeral Director must be present	\$ 195

TRANSFER TO CREMATORY WITH BASIC SERVICE PROVIDED

\$ 2,745

For those families who have pre arranged cremation services with Resthaven Memorial Gardens. This charge includes removal of remains, basic services of staff, necessary authorizations, bathing and handling of remains, and service vehicle. This charge does not include visitation or ceremonies.

IMMEDIATE BURIAL (Range)

\$3,828 \$16,323

Our charges for immediate burial (without any rites or ceremonies at the funeral home, graveside or elsewhere) include basic services of the funeral director and staff, refrigeration, dressing and casketing, transfer of the remains to funeral establishment, transportation of remains to cemetery.

Immediate burial with container provided by the purchaser <i>(All such containers must meet any applicable state or cemetery requirements.)</i>	\$ 3,828
Immediate burial with minimum casket from our facility (\$1,330.00)	\$ 5,158
Immediate burial with casket selected from our facility Price List for casket prices. <i>(in addition to cost of casket - see Casket Price List for casket prices)</i>	\$ 3,828

CREMATION WITH MEMORIAL SERVICE

\$ 4,995

This charge includes the basic services of staff, obtaining necessary authorizations, refrigeration, removal of remains from place of death within 35 miles, use of our chapel and staff for memorial ceremony or staff and equipment for memorial ceremony at graveside and transportation to the crematory. The crematory fee of \$650.00 is included. Alternative container or casket is additional. This charge does not include any funeral merchandise or cash advance items.

TRADITIONAL CREMATION

\$ 6,510

This charge includes the basic services of staff, obtaining necessary authorizations, embalming, dressing, casketing and cosmetizing, removal of remains from place of death within 35 miles, visitation/gathering in our chapel (same day), funeral ceremony in our chapel, transportation to the crematory. The crematory fee of \$650.00 is included. Alternative container or casket is additional. This charge does not include any funeral merchandise, register book or printed materials, hairdresser or cash advance items.

TRADITIONAL CREMATION AT ANOTHER FACILITY

\$ 6,905

This charge includes the basic services of staff, obtaining necessary authorizations, embalming, dressing, casketing and cosmetizing, removal of remains from place of death (within 35 miles), visitation or gathering in our chapel (same day), funeral ceremony at another facility, hearse, service vehicle, and transportation to the crematory. The crematory fee of

TRADITIONAL BURIAL IN FUNERAL HOME | ANOTHER FACILITY

This charge includes the basic services of staff, obtaining necessary authorizations, embalming, dressing, casketing and cosmetizing, removal of remains from place of death within 35 miles, visitation/gathering in our chapel (one day), funeral ceremony in our chapel, hearse to the cemetery (within 35 miles) and service vehicles. Casket is additional. This charge does not include any funeral merchandise, register book or printed materials, hairdresser or cash advance items. \$ 7,420

TRADITIONAL BURIAL WITHOUT VISITATION

This charge includes the basic services of staff, obtaining necessary authorizations, embalming, dressing, casketing and cosmetizing, removal of remains from place of death (within 35 miles), funeral ceremony at the funeral home, hearse to the cemetery (within 35 miles) and service car. Casket is additional. This charge does not include any funeral merchandise, register book or printed materials, hairdresser or cash advance items. \$ 6,825

TRADITIONAL BURIAL WITH GRAVESIDE (NO VIEWING)

This charge includes the basic services of staff, obtaining necessary authorizations, refrigeration, dressing, casketing and cosmetizing, removal of remains from place of death (within 35 miles), funeral ceremony at the graveside, and hearse to the cemetery (within 35 miles). Casket is additional. This charge does not include any funeral merchandise, register book or printed materials, hairdresser or cash advance items. \$ 4,870

TRADITIONAL BURIAL WITH GRAVESIDE WITH VIEWING

This charge includes the basic services of staff, obtaining necessary authorizations, embalming, dressing, casketing and cosmetizing, removal of remains from place of death (within 35 miles), visitation gathering in our chapel (one day), funeral ceremony at the graveside, and hearse to the cemetery (within 35 miles) and service vehicles. Casket is additional. This charge does not include any funeral merchandise, register book or printed materials, hairdresser or cash advance items. \$ 5,465

Alternative Containers (Range)

125.00 1,500.00

A complete price list will be provided at the funeral home.

Caskets (Range)

1,750.00 12,495.00

A complete price list will be provided at the funeral home.

Urns (Range)

197.00 575.00

A complete price list will be provided at the funeral home.

Outer Burial Containers (Range)

1,625.00 8,400.00

A complete price list will be provided at the funeral home.

Ceremonial Rental Casket with Insert

\$ 1,670

(Refer to Casket Price List as provided at the funeral home) If you choose a funeral service where a rental casket is provided, the casket used for the funeral service may have been used in a previous funeral service. If the casket has been used in a previous funeral service, the interior lining has been replaced.

MAILING OF CREMATED REMAINS

\$ 295

This charge includes handling, packaging and mailing of cremated remains with the purchase of an urn from our funeral home that is suitable for mailing, excluding the cost of the urn. Urns with cremated remains will only be mailed via the U.S. Post Office. Once the Post Office takes possession of the cremated remains, the funeral home is released from and assumes no further responsibility or liability for the cremated remains.

OTHER USE OF FACILITIES: Personalization

Premium Personalization <i>(This package includes vignette, colored overlays, personalized centerpieces and linens for reception room, family provided items and 75 keepsakes.)</i>	\$1,395.00
Standard Personalization <i>(This package includes vignette, colored overlays, or personalized centerpieces and linens for reception room, as well as 75 keepsakes.)</i>	\$795.00
Basic Personalization <i>(This package includes 75 keepsakes, a bubble release or native flower seed packs.)</i>	\$395.00
Additional Keepsakes (each)	\$2.50

SIGNATURE SERVICES

Bagpiper	\$ 600
Memorial Tribute Video	\$ 300
Flag Case	\$ 300
Framed Portrait	\$ 300
Fingerprint Jewelry	\$ 300
Memory Blanket	\$ 300
Memory Glass	\$ 300
Digital Video Book	\$ 300
Urn Ark	\$ 300

OTHER SERVICES AND MERCHANDISE

Acknowledgement Cards (per 25)	Starting at \$ 25
Additional DVD Copy (each)	\$ 25
Air Tray	\$ 295
Bi-Fold Service Folders (per 50)	Starting at \$ 55
Crematory Fee	\$ 595
Combination Unit	\$ 295
Catered Receptions	As Selected
Disaster Puch - Bio Seal	\$ 250
Engraving Fee	\$ 95
Memorial Book	Starting at \$ 50
Memorial Candle	\$ 15
Memorial Package	\$ 200
Prayer Cards (per 25)	\$ 25
Lamination of Prayer Cards or Bookmarks (per 25)	\$ 25
Personalization	Starting at \$ 795
Preparation Room Usage for Private Autopsy	\$ 500
SafelyHome Protection Plan	\$ 495
Linen Shroud	\$ 295
Velvet Urn Bag	\$ 20
Temporary plastic container for cremated remains	\$ 45
Ziegler Case	\$ 925
Memory Thumbprint Jewelry	As Selected

Casket Price List

Prices effective

18-Feb-25

Subject to change without notice.

PREMIER WOOD CASKETS by Batesville Casket Company

Imperial Mahogany (148245) - Mahogany Solid, Champagne Velvet	\$ 12,495
Pembrook Cherry (148227) - Cherry Solid, Glosss Finish, Champagne Velvet	\$ 7,070
Chancellor Walnut (148255) - Solid Walnut, Satin Finish, Rosetan Velvet Interior	\$ 9,645
Langdon Cherry (148236) - Solid Cherry, Satin Finish, Rosetan Velvet Interior	\$ 9,220
Pearson Cherry (202512) - Solid Cherry, Gloss Finish, Rosetan Velvet Interior	\$ 8,620
Madison Maple (225176) - Solid Maple, Gloss Finish, Moss Pink Velvet Interior	\$ 7,995
Cameron Oak (202513) - Solid Oak, Statin Finish, Rosetan Velvet Interior	\$ 7,645
Provincial Maple (148191) - Solid Maple, Champagne Velvet Interior	\$ 7,130

HARDWOOD CASKETS by Batesville Casket Company

Last Supper Pieta (259660) - Solid Poplar, Gloss Finish, White Sand Crepe Interior	\$ 7,150
Mansfield (245987) - Solid Poplar, Satin Finish, Linen Interior	\$ 7,015
Royal Oak (146885) - Solid Oak, Satin Finish, White Sand Crepe Interior	\$ 6,505
Woodhaven Pecan (205162) - Solid Pecan, Satin Finish, Rosetan Velvet Interior	\$ 6,420
Colonial Pine (148216) - Solid Pine, Gloss Finish, Sandweave Interior	\$ 6,210
Rosette (242707) - Select Hardwood, Natural Eyelet, Wood Linlay	\$ 5,685
Fireside (269166) - Barnwood Finish, Natural Cotton Interior	\$ 5,480
Branson (246736) - Select Hardwood, Satin Finish, Basketweave Interior	\$ 4,995
Edgemont (239383) Select Hardwood, Satin Finish, Rosetan Crepe Interior	\$ 4,670
Mongomery (249223) - Select Hardwood, Rosetan Crepe Interior	\$ 4,565
Weston Veneer (205163) - Select Hardwood, Rosetan Crepe Interior	\$ 4,605
Finley Pine (146897) - Solid Pinw, Rosetan Crepe Interior	\$ 4,605
Woodbridge Pecan (146799) - Solid Pecan, Satin Finish, Rosetan Velvet Interior	\$ 4,080
Meridian (146840) - Select Hardwood, Rosetan Crepe Interior	\$ 3,950
Westridge (146815) - Select Hardwood, Rosetan Crepe Interior	\$ 3,950
Libra Light Brown (248177) - Select Hardwood, Rosetan Crepe Interior	\$ 3,075

Precious Metal Caskets by Batesville Casket Company

Venetian Bronze (147961) - Solid Bronze, Bronze Brushing, Rosetan Velvet Interior	\$ 12,495
Agean Cooper (147935) - Brushed Natural Copper, Rosetan Velvet Interior	\$ 10,160
Tapestry Rose (147951) - Brushed Natural Copper, Silver Rose Rails, Pink Velvet Interior	\$ 10,160

Stainless Steel Caskets by Batesville Casket Company

Sunset Wheat (147909) - Brushed Copper Finish, Rosetan Velvet Interior	\$ 7,910
Blue Mist (147903) - Brushed Silver Finish, Powder Blue Railse, Blue Velvet Interior	\$ 7,425
Tapestry Rose (147901) - Brushed Copper Finish, Colonial Bluff Rails, Pink Velvet Interior	\$ 7,130
Silver Sapphire (185491) - Brush Blue/Silver Finish, Silver Velvet Interior	\$ 7,130
Golden Rose (202001) - Brush Silver Finish, Orchid Rails, Pink Crepe Interior	\$ 7,055

16 Gauge Steel Caskets by Batesville Casket Company

Tiger Eye (271802) - Brush Gold Finish, Rosetan Velvet Interior	\$ 7,805
Star Quartz (147796) - Brush Gold Finish, Velvet Interior	\$ 7,690

18 Gauge Steel Caskets by Batesville Casket Company

Platinum (147756) - Silver Finish, Champagne Velvet Interior	\$ 6,420
Pieta Star Quartz (218068) - Brush Gold Finish, Rosetan Velvet Interior	\$ 6,400
Primrose (147723) - White Shaded Rose, Rounded Corners, Embroidered	\$ 5,905
Golden Rose (258112) - Brushed Silver Finish, Pink Crepe Interior	\$ 5,490
Onyx (255455) - Brushed Silver Finish, Ebony Rails, Silver Crepe Interior	\$ 5,365
Nepolitan Silver (279144) - Neapolitan Blue, Blue Crepe Interior	\$ 4,900
Sydney Blue (201943) Neapolitan Blue, Blue Crepe Interior	\$ 4,985
Auburn Sunset (216580) - Copper Color, Rosetan Crepe Interior	\$ 4,955
Antique Blue (148004) - Neapolitan Blue, Shaded Silver, Blue Crepe Interior	\$ 4,900
Desert Sand (147883) - Two-Tone Bronze Color, Copper Rails, Rosetan Crepe Interior	\$ 4,785
Onyx (147816) - Brush Silver Finish, Silver Crepe Interior	\$ 4,605
Primrose (217296) - Whited Shaded Rose, Pink Crepe Interior	\$ 4,605
Virgo Blue (279127) - Blue Painted Exterior, Blue Crepe Interior	\$ 4,605
Virgo Silver (279131) - Silver Painted Exterior, White Crepe Interior	\$ 4,605
Virgo White (279134) - White Painted Exterior, White Crepe Interior	\$ 4,605
Mercury (148013) - Brush Silver Finish, Ivory Crepe Interior	\$ 3,950
Athena (147837) - White Pink Finish, Moss Pink Crepe Interior	\$ 3,950

20 Gauge Steel Caskets by Batesville Casket Company

Argo Silver (279080) - Silver Finish, White Velvet Interior	\$ 4,550
Argo Orchid (279082) - Silver Finish, Pink Velvet Interior	\$ 4,550
Ivory (252031) - Gloss White Finish, White Crepe Interior	\$ 4,415
Aries Blue (234314) - Satin Blue Finish, Blue Crepe Interior	\$ 3,570
Aries Silver (234318) - Satin Silver Finish, White Crepe Interior	\$ 3,570
Aries Copper (234320) - Satin Copper Finish, Rosetan Crepe Interior	\$ 3,570
Aries Orchid (234316) - Satin Orchid Finish, Pink Crepe Interior	\$ 3,570
Aries White (234322) - Satin White Finish, White Crepe Interior	\$ 3,570
Ivory Gold (148040) - Whited Shaded Gold Finish, White Crepe Interior	\$ 3,515
Primrose (148043) - White Shaded Rose Finish, Pink Crepe Interior	\$ 3,400
Ocean Blue (252121) Neapolitan Blue Shaded Silver Finish, Blue Crepe Interior	\$ 3,400
Roman (148031) - Light Bronze Finish, Rosetan Crepe Interior	\$ 3,285
Silver Ebony (148091) - Ebony Shaded Silver Finish, White Crepe Interior	\$ 3,170
Eartone (148028) - Dark Bronze Finish, Rosetan Crepe Interior	\$ 3,390
Pisces Silver (257956) - Silver Finish, White Crepe Interior	\$ 3,055
Pisces Sand (257958) - Bronze Finish, Rosetan Crepe Interior	\$ 3,055
Revere Silver (148029) - Dark Gunmetal Finish, White Crepe Interior	\$ 2,850

Non-Gasketed Steel Caskets by Batesville Casket Company

Apollo Silver (221502) - Silver Finish, White Crepe Interior	\$ 3,075
Apollo Blue (221503) - Blue Finish, Blue Crepe Interior	\$ 3,075
Apollo Copper (221504) - Copper Finish, White Crepe Interior	\$ 3,075
Apollo White (221505) - White Finish, White Crepe Interior	\$ 3,075
Apollo Black (244327) - Black Finish, White Crepe Interior	\$ 3,075
Gemini Blue (217389) - Satin Blue Finish, Blue Crepe Interior	\$ 2,420

Infant Caskets by Wilbert

19' Loved and Cherished Infant Casket	\$ 255
24' Loved and Cherished Infant Casket	\$ 420
31' Loved and Cherished Infant Casket	\$ 550
36' Loved and Cherished Infant Casket	\$ 630

Cremation Caskets by Batesville Casket Company

Libra Light Brown (248177) - Solid Poplar , White Sand Crepe Interior	\$ 3,075
Lyra Brown Cremation Casket (269152) - Veneer, Satin Finish, Rosetan Crepe Interior	\$ 3,075
Pacific Pine (184744) - Wood Composite, Rosetan Crepe Interior	\$ 1,595
Brockton Ceremonial Casket (Insert Included 246588) - Oak Casket Shell, Cardboard Insert, Rosetan Crepe Insert	\$ 1,670
Grey Doeskin (147970) - Blue Grey Textured Cloth Covered Fiberboard, White Crepe Interior	\$ 1,750

ALTERNATIVE CONTAINERS

6P1 Pine 52X Square (148094) - Unfinished Pine, No Interior	\$ 1,480
Caden Cremation Container (252322) Enhanced Fiber Board Container, Ivory Crepe Int	\$ 525
Trayview Cremation Container(242414) - Fiber Board Container, Ivory Crepe Containe	\$ 420
Cardboard Alternative Cremation Container - Cardboard Container, No Interior	\$ 155

WARRANTY/DISCLAIMER:

Our funeral home makes no representations or warranties regarding caskets, vaults, urns or other funeral goods sold by the funeral home. The only warranties, expressed or implied, granted in connection with the goods sold with this funeral service are expressed written warranties, if any, extended by the manufacturers thereof. No other warranties, expressed or implied, including the implied warranties of merchantability or fitness for a particular purpose, are extended by the funeral home.

OUTER BURIAL CONTAINER PRICE LIST

Prices effective

February 18, 2025

Subject to change without notice.

State or local law does not require that you buy a container to surround the casket in the grave. However, many cemeteries require that you have such a container so that the grave will not sink in. Either a grave liner or burial vault will satisfy these requirements.

Wilbert Burial Containers: Wilbert Vault Company has a service charge of \$895.00 to deliver and install the outer burial containers specified below. This charge is in addition to the price of the container. Wilbert also charges additional overtime fees: Saturday \$100.00, Sunday \$300.00, and Holidays \$350.00.

CASKET OUTER BURIAL CONTAINERS

Aegean Bronze	\$ 8,400
<i>Triple Reinforced Vault Bronze Alloy Lined Vault with ABS seamless Interior/Exterior liner</i>	
Barrington Bronze	\$ 7,345
<i>Double Reinforced Bronze Lined Vault with ABS seamless Interior liner</i>	
Williamsburg Copper	\$ 7,345
<i>Double Reinforced Copper Lined Vault with ABS seamless Interior liner</i>	
Reflection Stainless	\$ 5,775
<i>Double Reinforced Copper Lined Vault with ABS seamless Interior liner</i>	
Reflection Pink Stainless	\$ 5,775
<i>Double Reinforced Stainless Steel Lined Vault with ABS seamless Interior liner</i>	
Heritage	\$ 2,785
<i>Single Reinforced Mid-line Vault with Strentex plastic inner liner</i>	
Oxford	\$ 2,175
<i>Single Reinforced Bonded Liner Entry level Vault with Strentex plastic inner liner</i>	
Concrete Box	\$ 1,625
<i>Unlined 30' OBC, No inner liner, non protective concrete</i>	

URN OUTER BURIAL CONTAINERS

Aegean Stainless	\$ 1,885
<i>Double Reinforced Stainless Steel Lined Vault with ABS seamless Interior liner</i>	
Trilogy Bronze	\$ 1,885
<i>Double Reinforced Bronze Lined Vault with ABS seamless Interior liner</i>	
Trilogy Copper	\$ 1,680
<i>Double Reinforced Copper Lined Vault with ABS seamless Interior liner</i>	
Trilogy Stainless	\$ 1,680
<i>Double Reinforced Stainless Steel Lined Vault with ABS seamless Interior</i>	

Trilogy Pink Stainless	\$ 1,680
<i>Double Reinforced Stainless Steel Lined Vault with ABS seamless Interior</i>	
Trilogy	\$ 980
<i>Single Reinforced Bonded Liner Entry level Vault with Strentex plastic inner liner</i>	
Concrete Box	\$ 885
<i>Unlined OBC, No inner liner, non protective concrete</i>	

OTHER SERVICES

Tent and Chairs	\$ 400
Vault Setup Fee	\$ 395
Milage Fee for Cemetery over 25 miles	\$ 3

WARRANTY/DISCLAIMER:

Our funeral home makes no representations or warranties regarding caskets, vaults, urns or other funeral goods sold by the funeral home. The only warranties, expressed or implied, granted in connection with the goods sold with this funeral service are expressed written warranties, if any, extended by the manufacturers thereof. No other warranties, expressed or implied, including the implied warranties of merchantability or fitness for a particular purpose, are extended by the funeral home.

Resthaven Funeral Home & Memorial Gardens

9501 Catocin Mnt Hwy | Frederick, MD 21701

301-898-1577

www.resthaven.us

©2025 Resthaven Funeral Home & Memorial Gardens