



Harper's

Community Funeral Home

INDEPENDENTLY OWNED

Family Owned and Operated
since 1872

www.harperfuneralhome.com

General Manager: David Rousculp

740 SR 930 E
New Haven, IN 46774
260-493-4433

Member



Veterans
Funeral Care™

GENERAL PRICE LIST

October 1, 2024

Remembering
those who made life special



Table of Contents

Consumer Information, Pricing Policy and Disclosures	3 – 5
General Price List of Professional Services	6 – 7
Funeral Package Offerings	8 – 20
Burial Packages	8 – 15
Cremation Packages	16 – 20
Payment Options	21
Cash Advances	22
Casket Price List and Featured Caskets	23 – 28
Outer Burial Container Price List and Featured Vaults	29 – 32
Urns	33
Flowers	34
Other Merchandise	35
Monuments	36 – 37
Keepsake Jewelry	38
Halo Memorial Line	39

Remembering what made life special

Few things help in the healing process more than a meaningful ceremony that commemorates all that made a loved one special.

A ceremony enables family and friends to come together, to remember, to celebrate, and to pay tribute to someone who was a significant part of their lives. While each of us grieves differently, a structured ceremony is known to help all who participate.

Your tribute to a loved one can be just that—your tribute.

Whether simple or elaborate, spiritual or not, private or open to the community, your ceremony can be arranged in any manner you choose. You may wish to play special songs, display photos and memorabilia from home, or choose family members

and friends to share stories of how their lives were touched by your loved one. Whatever you choose, you'll cherish the memories for a lifetime.

This booklet explains six popular options for tribute ceremonies that are often selected by families for the ease of choosing a package approach. Of course, you can freely elect to design a ceremony of your choice that brings comfort and peace to all.

Please note that these packages do not include cash advance items or additional weekend and holiday rates.

This offering is not in lieu of our general price list, but provided as a supplement to inspire you to remember all that made this life special...

...in your own special way.



Diversity in CHOICES FOR FINAL RESTING PLACE



COMPANION GRAVE



MAUSOLEUM



FAMILY GARDENS



PERSONAL TOMB



HOME



NICHE



BURIAL



SCATTER

Harper's Community Funeral Home

PRICING POLICIES AND DISCLOSURES

Throughout 125 years and four generations, our staff has been privileged to serve you, along with families of New Haven and surrounding areas. Our policy has always been to provide full information to the public concerning funeral services, arrangements and prices.

Today, when individual attitudes require a variety of funeral service alternatives, you will discover our Itemized Pricing Guide to be helpful and informative when considering service details. Confirmed provisions for Payment in Full are required at the conclusion of the arrangement conference, or prior to the date of funeral visitation or ceremony, depending on services selected. Payment options are also explained on page 21.

Greater satisfaction will come through careful consideration of the details offered and their value in fulfilling your personal needs. The following price quotations are provided to assist you during these considerations.

We will provide further explanations of detailed funeral arrangements, packages or any of the information provided in this guide at the arrangement conference.

The goods and services that follow are those we can provide to our families. You may choose only the items you desire. However, any funeral arrangements you select will include a charge for our basic services and overhead. If legal or other requirements mean you must buy any items you did not specifically ask for, we will explain the reason in writing on the statement we provide describing the funeral goods and services you selected.



PRICES FOR OUR SERVICES

BASIC SERVICES OF FUNERAL DIRECTOR & STAFF \$5,750

Our charge for this service includes 24-hour availability of staff; consultation and arrangements with family, clergy, cemetery or crematory and others as required; preparing, filing and securing notices, authorization and permits; assistance with forms, and notary service.

This fee for our basic services and overhead will be added to the total cost of the funeral arrangements you select.
(This fee is already included in our charges for direct cremation, immediate burials and forwarding or receiving remains.)

EMBALMING \$825

Except in special cases, embalming is not required by law. Embalming may be necessary, however, if you select certain funeral arrangements, such as a funeral with viewing. If you do not want embalming, you have the right to choose an arrangement that does not require you to pay for it, such as direct cremation or immediate burial.

OTHER PREPARATION OF THE BODY

Dressing, casketing, cosmetizing	\$325
Special restoration (i.e. donor or autopsy case) (per hour charge)	\$275
Preparation of body for identification prior to cremation/immediate burial	\$325
Minimum bathing, treatment and handling of unembalmed body	\$325
Pacemaker/Implant Device Removal	\$225
Hairdressing	\$90
Care of human remains over 4 days (per day charge)	\$100
Care of cremains per day over 10 days	\$75

LOCAL TRANSFER OF REMAINS TO FUNERAL HOME \$395

LOCAL TRANSFER OF REMAINS TO CREMATORY \$395

MILEAGE CHARGE FOR ALL VEHICLES OUTSIDE 20 MILE RADIUS \$4.50

(plus transfer base rate, prevailing fuel expenses per gal., food/lodging expenses when necessary)

USE OF FACILITIES & STAFF FOR VISITATION (4 hours) \$455

Use of equipment and staff for visitation elsewhere \$575

Additional charge on Saturday, Sunday or Holidays \$525

USE OF FACILITIES & STAFF FOR CEREMONY \$575

Use of equipment and staff for ceremony elsewhere \$675

Additional charge on Saturday, Sunday or Holidays \$525

PROCESSION AND COMMITTAL SERVICE FOLLOWING CEREMONY \$275

USE OF FACILITIES & STAFF FOR MEMORIAL SERVICE \$575

Use of equipment and staff for service elsewhere without remains present \$575

Additional charge for Saturday, Sunday or Holidays \$525

Use of facilities and staff for 1 hour private viewing (limit 10 people) \$350

USE OF EQUIPMENT & STAFF FOR GRAVESIDE SERVICE \$375

Additional charge for graveside service on Saturday, Sunday or Holidays \$525

HEARSE \$295

LEAD/CLERGY CAR or UTILITY VEHICLE \$195

PRICES FOR OUR SERVICES – **ALTERNATIVE SELECTIONS**

FORWARDING OF REMAINS TO ANOTHER FUNERAL HOME\$5,500

Our charge for local transfer of remains to funeral home, basic services of funeral director and staff, embalming, dressing, casketing, and cosmetizing, and local transfer of remains to receiving location within 20 mile. This charge does not include viewing, ceremony, merchandise, filing of local death certificate, extra mileage, or shipping charges.

RECEIVING REMAINS FROM ANOTHER FUNERAL HOME\$4,995

Our charge to receive and transfer local remains from a location within 20 miles, basic services of funeral director and staff, and local transfer of remains to cemetery or crematory. This charge does not include viewing, ceremony, graveside service, committal service, merchandise, or extra mileage.

DIRECT CREMATION *available from \$5,995 to \$11,000*

Our charge for this service includes local transfer of remains to funeral home, basic services of funeral director and staff, preparation of body for identification prior to cremation, transfer to local crematory, and cremation fee. This charge does not include embalming, viewing or memorial service.

If you want to arrange a direct cremation, you can use an alternative container. Alternative containers encase the body and can be made of materials like fiberboard or composition materials (with or without an outside covering). The containers we provide are traditional wood caskets, cremation-only caskets or cardboard cremation containers.

Direct cremation with container provided by purchaser (including cremation fee)\$5,995

Direct cremation with alternative container described below (including cremation fee)

Minimum cardboard container\$6,345

IMMEDIATE BURIAL *available from \$6,765 to \$13,600*

Our charge for this service includes local transfer of remains to funeral home, basic services of funeral director and staff, dressing, casketing and cosmetizing, and hearse. This fee does not include embalming, viewing, ceremony, graveside service, or committal.

Immediate burial with casket provided by consumer\$6,765

Immediate burial with casket described below\$9,315

Cloth covered composite board casket with lining\$2,850

CASKETS *available from \$1,995 to \$6,500*

OUTER BURIAL CONTAINERS..... *available from \$1,995 to \$15,000*

CREMATION URNS *available from \$150 to \$750*

CREMATION FEE\$550

IN-HOME REMOVAL REQUIRING ADDITIONAL STAFF.....\$125

FEE FOR DIVIDING OF CREMATED REMAINS\$50

MILEAGE CHARGE FROM INDIANAPOLIS INTERN'L AIRPORT TO FUNERAL HOME\$612

LIVE STREAMING\$75

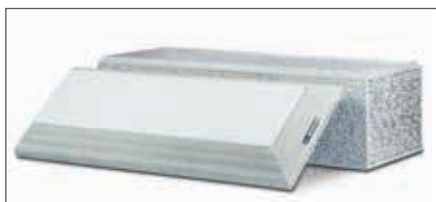
TRADITIONAL *Funeral Service* BEST VALUE

\$16,500

THIS COMPLETE PACKAGE INCLUDES:

- Professional services of funeral director and staff
- Embalming of the deceased
- Other preparation of the body (dressing, casketing and cosmetizing)
- Hairdressing/barbering
- Local removal and transfer of the remains to the funeral home
- Use of staff for visitation at funeral home or elsewhere
- Use of staff for ceremony at funeral home or elsewhere
- Lead car
- Hearse
- Utility vehicle
- Committal/procession service
- Choice of casket on next page
- Wilbert Venetian Vault
- Custom Legacy Print for vault cover
- Premium register book
- Memorial folders or prayer cards (200)
- Thank you cards (100)
- Bookmarks (5 laminated)
- Video tribute (up to 200 pics)
- 1 Thumbie sterling silver Grand Charm with 18" chain or tie tac/lapel pin
- Premium flower casket spray, 6 boutonnieres
- Temporary grave marker
- Place obituary on website and Facebook
- Portrait (does not include frame)
- Premium hospitality service for visitation

Cash advance items are those paid to third parties on your behalf and may include but are not limited to: Honorarium for Clergy, Death Certificates, Organist, Obituary, Opening and Closing of the Grave, and associated cemetery charges. See page 22.



Wilbert Venetian Vault



Video tribute (up to 200 pics)



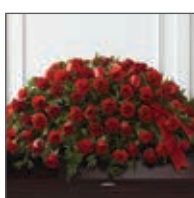
Premium register book
Service folders or prayer cards (200)
Thank you cards (100)
Bookmarks (5 laminated)



Custom Legacy Print for vault cover



1 Thumbie



Flower package



Premium hospitality service



Portrait

CASKET CHOICES



Sanctuary (SST)
Praying Hands



Ebony



Carnation



Majestic Pink Rose



Montclair Oak



Winston Walnut



Kingdom Poplar



Westbrook Maple

TRADITIONAL *Funeral Service* EXCELLENT VALUE

\$15,500

THIS COMPLETE PACKAGE INCLUDES:

- Professional services of funeral director and staff
- Embalming of the deceased
- Other preparation of the body (dressing, casketing and cosmetizing)
- Hairdressing/barbering
- Local removal and transfer of the remains to the funeral home
- Use of staff for visitation at funeral home or elsewhere
- Use of staff for ceremony at funeral home or elsewhere
- Lead car
- Hearse
- Utility vehicle
- Committal/procession service
- Choice of casket on the next page
- Wilbert Continental Vault
- Premium register book
- Memorial folders or prayer cards (200)
- Thank you cards (100)
- Bookmarks (5 laminated)
- Video tribute (up to 200 pics)
- Deluxe flower casket spray, 6 boutonnieres
- Temporary grave marker
- Place obituary on website and Facebook
- Portrait (does not include frame)
- Standard hospitality service for visitation

Cash advance items are those paid to third parties on your behalf and may include but are not limited to: Honorarium for Clergy, Death Certificates, Organist, Obituary, Opening and Closing of the Grave, and associated cemetery charges. See page 22.



Wilbert Continental Vault



Video tribute (up to 200 pics)



Hospitality service



Flower package



Portrait



Premium register book
Service folders or prayer cards (200)
Thank you cards (100)
Bookmarks (5 laminated)

CASKET CHOICES



Timberline



Westminster



McKenzie Poplar



Melody



Sterling Gold



Sterling Cherry



Sterling Silver



Eternity - 29"

TRADITIONAL *Funeral Service* CLASSIC VALUE

\$13,950

THIS COMPLETE PACKAGE INCLUDES:

- Professional services of funeral director and staff
- Embalming of the deceased
- Other preparation of the body (dressing, casketing and cosmetizing)
- Hairdressing/barbering
- Local removal and transfer of the remains to the funeral home
- Use of staff for visitation at funeral home or elsewhere
- Use of staff for ceremony at funeral home or elsewhere
- Lead car
- Hearse
- Utility vehicle
- Committal/procession service
- Choice of casket on next page
- Wilbert Monticello Vault
- Premium register book
- Memorial folders or prayer cards (200)
- Thank you cards (100)
- Bookmarks (5 laminated)
- Video tribute (up to 200 pics)
- Standard flower casket spray, 6 boutonnieres
- Temporary grave marker
- Place obituary on website and Facebook
- Portrait (does not include frame)
- Standard hospitality service for visitation

Cash advance items are those paid to third parties on your behalf and may include but are not limited to: Honorarium for Clergy, Death Certificates, Organist, Obituary, Opening and Closing of the Grave, and associated cemetery charges. See page 22.



Wilbert Monticello Vault



Video tribute (up to 200 pics)



Hospitality service



Flower package



Premium register book
Service folders or prayer cards (200)
Thank you cards (100)
Bookmarks (5 laminated)



Portrait

CASKET CHOICES



Grayson



Gregory



Gloria



Going Home



Graham



Blue Tapestry

IN HONOR *of their* SERVICE

(Exclusively for Veterans)

\$14,500

THIS COMPLETE PACKAGE INCLUDES:

- Professional services of funeral director and staff
- Embalming of the deceased
- Other preparation of the body (dressing, casketing and cosmetizing)
- Hairdressing/barbering
- Local removal and transfer of the remains to the funeral home
- Use of staff for visitation at funeral home or elsewhere
- Use of staff for ceremony at funeral home or elsewhere
- Lead car
- Hearse
- Utility vehicle
- Committal/procession service
- Veterans casket
- Wilbert Venetian Vault
- Custom Legacy Print for vault cover
- Flag case
- Premium register book
- Memorial folders or prayer cards (200)
- Thank you cards (100)
- Bookmarks (5 laminated)
- Video tribute (up to 200 pics)
- 1 Thumbie sterling silver Grand Charm w/18" chain, tie tac/lapel pin
- Premium flower casket spray, 6 boutonnieres
- Temporary grave marker
- Place obituary on website and Facebook
- Portrait (does not include frame)
- Premium hospitality service for visitation

Cash advance items are those paid to third parties on your behalf and may include but are not limited to: Honorarium for Clergy, Death Certificates, Organist, Obituary, Opening and Closing of the Grave, and associated cemetery charges. See page 22.





Hampton Honor
(Army)



Hampton Honor
(Marine)



Wilbert Venetian Vault



Custom Legacy Print for
vault cover



Video tribute (up to 200 pics)



Hers

1 Thumbie



His



Flag case



Premium register book
Service folders or prayer cards (200)
Thank you cards (100)
Bookmarks (5 laminated)



Flower package



Hospitality service



Portrait

TRADITIONAL *Tribute Service*

\$10,950

THIS COMPLETE PACKAGE INCLUDES:

- Professional services of funeral director and staff
- Embalming of the deceased
- Other preparation of the body (dressing, casketing and cosmetizing)
- Hairdressing/barbering
- Local removal and transfer of the remains to the funeral home
- Transfer of remains to crematory or church
- Crematory fee
- Use of staff for visitation at funeral home or elsewhere
- Use of staff for ceremony at funeral home or elsewhere
- Use of rental casket with tribute for viewing
- Choice of urn
- Premium register book
- Memorial folders or prayer cards (200)
- Video tribute (up to 200 pics)
- Thank you cards (100)
- Bookmarks (5 laminated)
- 1 Thumbie sterling silver Grand Charm with 18" chain
- Standard flower casket spray, 6 boutonnieres
- Place obituary on website and Facebook
- Portrait (does not include frame)
- Standard hospitality service for visitation

Cash advance items are those paid to third parties on your behalf and may include but are not limited to: Honorarium for Clergy, Death Certificates, Organist, Obituary, Opening and Closing of the Grave, and associated cemetery charges. See page 22.





Brockton – 27"

URNS

Flag Series



Solitude
Bronze Cube



Remembrance
Companion Urn



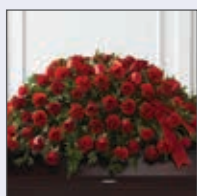
Reflections



Honor II



Square Walnut II



Flower package



Portrait



Video tribute (up to 200 pics)



1 Thumbie



Premium hospitality
service



Premium register book
Service folders or prayer cards (200)
Thank you cards (100)
Bookmarks (5 laminated)

REMEMBRANCE *Service* (One Day Service)

\$7,500

THIS COMPLETE PACKAGE INCLUDES:

- Professional services of funeral director and staff
- Local removal and transfer of the remains to the funeral home
- Transfer of remains to crematory
- Crematory fee
- Use of staff for ceremony at funeral home or elsewhere
- Up to two hours visitation prior to service
- Alternative Container
- Choice of urn
- Premium register book
- Memorial folders or prayer cards (200)
- Video tribute (up to 200 pics)
- Thank you cards (100)
- Bookmarks (5 laminated)
- Urn spray (standard)
- Place obituary on website and Facebook
- Portrait (does not include frame)

Cash advance items are those paid to third parties on your behalf and may include but are not limited to: Honorarium for Clergy, Death Certificates, Organist, Obituary, Opening and Closing of the Grave, and associated cemetery charges. See page 22.



URN CHOICES



Blue Essence



Silver Birds



Purple Fora



Classic Pink Rose



Sensation



Golden Memory



Premium register book
Service folders or prayer cards (200)
Thank you cards (100)
Bookmarks (5 laminated)



Urn spray



Video tribute (up to 200 pics)



Portrait

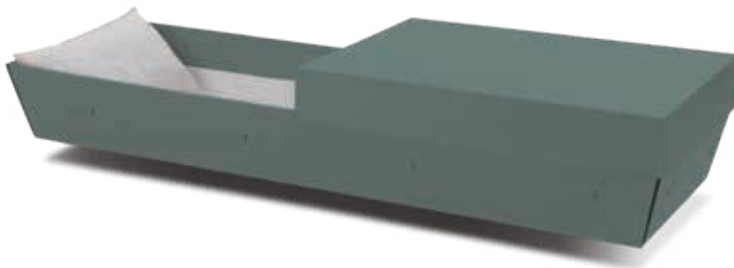
CREMATION *without celebration*

\$5,995

THIS COMPLETE PACKAGE INCLUDES:

- Professional services of funeral director and staff
- Other preparation of the body (PID)
- 1 hour of family identification for up to 10 members
- Local transfer to funeral home
- Local transfer to crematory
- Baden Alternative Container
- Basic Box Urn
- Crematory fee

Cash advance items are those paid to third parties on your behalf and may include but are not limited to: Honorarium for Clergy, Death Certificates, Organist, Obituary, Opening and Closing of the Grave, and associated cemetery charges. See page 22.



Baden Alternative Container



Flair Copper

PAYMENT OPTIONS

- Cash*
- Check*
- Cashiers check*
- Money order*
- Pre-funded pre-arrangement
- Verified life insurance assignment*
(2.5% admin. fee applied to assigned insurance benefits) +4.5% 3rd party fee
- Credit card*
(3.0% processing fee will be added to the amount charged)

Our products and services are priced to provide you unlimited access to professionally trained personnel, accommodating facilities and an extensive variety of the highest quality merchandise at your convenience.

WE DO NOT INVOICE ESTATES.

NO SUMS ARE PAYABLE IN INSTALLMENTS.

A \$50.00 CHARGE WILL BE APPLIED TO ALL RETURNED CHECKS.

CASH ADVANCES AND SALES TAX ARE DUE AT THE ARRANGEMENT CONFERENCE.

*Interest of 1.5% a month will begin to accrue ten days after arrangement date on unpaid balance not assigned.



CASH ADVANCES

Cash advances are expenses with third parties that are necessarily incurred by a family for the funeral notification, observance, ceremony, and disposition that are not connected to the funeral home in any way.

Examples of these expenses include, but are not limited to:

- Obituary notice in the newspaper(s)
- Opening and closing of the grave by the cemetery
- Death certificates
- Organist
- Clergy
- Cantor
- Bagpiper
- Set, seal, and delivery of the vault
- Other incidental charges

As a courtesy to our families, Harper's Community Funeral Home pays these fees "in advance" on behalf of the family and then itemizes these on the Statement of Goods and Services we provide to every family. We make no money on these and do not impose any type of handling fee for this service. The service is a straight pass-through of costs as required by the respective providers. Should you have questions regarding these expenses, please ask our office manager, Ms. Chevas Hefflinger, to explain in further detail.



CASKET PRICE LIST — FEATURED PRODUCTS

PRODUCT DESCRIPTION	INTERIOR MATERIAL	PRICE
1. Cypress Bronze	Silver Velvet	\$6,500
2. Newton Cherry	Champagne Velvet	\$5,500
3. Fairbanks Pecan	Champagne Velvet	\$4,995
4. Sanctuary Sst Praying Hands	Champagne-Charpente Velvet	\$4,500
5. Ebony	Champagne-Charpente Velvet	\$4,500
6. Carnation	Champagne Velvet	\$4,500
7. Majestic Pink Rose	Natural Velvet	\$4,500
8. Winston Walnut	Champagne Velvet	\$4,500
9. Westbrook Maple	Ivory Crepe	\$4,500
10. Montclair Oak	Rosetan Crepe	\$4,500
11. Kingdom Poplar	Moss Pink Crepe	\$4,500
12. Hampton (Army)	Gray Velvet W/ Silver Trim	\$3,295
13. Hampton (Marine)	Gray Velvet W/ Redtrim	\$3,295
14. Sterling Gold	Khaki Linwood	\$3,295
15. Sterling Cherry	Ivory Linwood	\$3,295
16. Sterling Silver	Rosetan Crepe	\$3,295
17. Eternity – 29"	Rosetan Crepe	\$3,295
18. Westminster	Champagne Velvet	\$3,295
19. Melody	Champagne Velvet	\$3,295
20. Timberline	Champagne Velvet	\$3,295
21. Mckenzie Poplar	Rosetan Crepe	\$3,295
22. Lilac	Violet Crepe	\$2,950
23. Bridgewater	Ivory Crepe	\$2,950
24. Grayson	Light Blue Crepe	\$2,850
25. Gregory	Moss Pink Crepe	\$2,850
26. Gloria	Ivory Crepe	\$2,850
27. Going Home	Rosetan Crepe	\$2,850
28. Graham	Almond Crepe	\$2,850
29. Tapestry Dome Top Cloth	Blue Crepe	\$2,850
30. Franklin (5 Colors)		\$2,650
31. Ultra 32" 20 Ga	Gray Crepe	\$3,250
32. Mesa 33" - Wood	Gray Crepe	\$2,550
33. Delane (6 Colors) 20 Ga Ngs	White Crepe	\$2,395
34. Truman 20 Ga Ngs	Gray Crepe	\$1,995
35. Shipping Container	Gray Crepe	\$650
36. Alternative Container		\$350

See photos on pages 24-28

WARRANTIES

Our funeral home makes no representations or warranties about the protective value of certain caskets or outer burial containers other than those made by the manufacturer. The only warranties expressed or implied, granted in connection with the goods sold with this funeral service are the expressed written warranties, if any, extended by the manufacturer thereof. No other warranties of merchandising fitness for a particular product are extended by the seller.

Our FINEST Collection



Our TIMELESS ELEGANCE Collection



Our CLASSIC TRADITIONS Collection



Eternity – 29"



Westminster



Melody



Timberline



Mckenzie Poplar



Lilac



Bridgewater



Grayson

Our *COMMEMORATIVE Collection*



25 \$2,850

Gregory



26 \$2,850

Gloria



27 \$2,850

Going Home



28 \$2,850

Graham



29 \$2,850

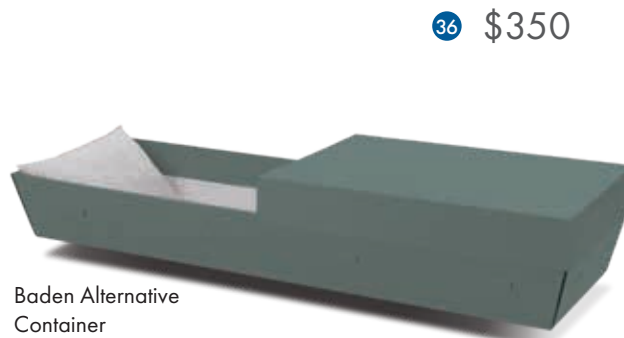
Tapestry Dome
Top Cloth



30 \$2,650

Franklin (5 Colors)

SPECIALTY PRODUCTS *Collection*



OUTER BURIAL CONTAINER PRICE LIST

VAULT	MATERIAL	PRICE
Wilbert Bronze Ultimate	Bronze, ABS Plastic	\$15,000
Wilbert Bronze Triune	Bronze, ABS Plastic	\$5,500
Wilbert Stainless Steel Triune	SST, ABS Plastic	\$4,595
Wilbert Stainless Steel Triune (Cameo Rose)	SST, ABS Plastic	\$4,595
Wilbert Stainless Steel Triune (Veterans)	SST, ABS Plastic	\$4,595
Wilbert Tribute	ABS Plastic	\$4,250
Wilbert Venetian	ABS Plastic	\$3,650
Wilbert Continental	Strentex Plastic	\$2,995
Wilbert Monticello	Strentex Plastic	\$2,450

GRAVELINER PRODUCT DESCRIPTION	INTERIOR MATERIAL	PRICE
Wilbert Monarch	None	\$1,995

SPECIALTY PRODUCT DESCRIPTION	INTERIOR MATERIAL	PRICE
Wilbert 34" SST Triune	ST, ABS Plastic	\$4,995
Wilbert 34" Venetian	ABS Plastic	\$3,995
Wilbert 34" Monticello	Strentex Plastic	\$2,750
Wilbert 34" Monarch	None	\$2,495

CREMATION BURIAL CONTAINER	INTERIOR MATERIAL	PRICE
Wilbert Bronze Triune	Bronze, ABS Plastic	\$1,250
Wilbert Stainless Steel Triune	SST, ABS Plastic	\$1,050
Wilbert Stainless Steel Triune (Cameo Rose)	SST, ABS Plastic	\$1,050
Wilbert Stainless Steel Triune (Veterans)	SST, ABS Plastic	\$1,050
Wilbert Venetian	ABS Plastic	\$950
Wilbert Universal	Strentex Plastic	\$550
Wilbert Custom Legacy Carapace Print*		\$500
Ovation Display*		

*Pictured on page 30.

WARRANTIES

Our funeral home makes no representations or warranties about the protective value of certain caskets or outer burial containers other than those made by the manufacturer. The only warranties expressed or implied, granted in connection with the goods sold with this funeral service are the expressed written warranties if any, extended by the manufacturer thereof. No other warranties of merchandising fitness for a particular product are extended by the seller.

The WILBERT *Way*



WHAT WILL BE AT THE GRAVESIDE?

The burial vault is usually set at the graveside for a brief service before interment. After the service, the cover will be placed over the base and sealed, and the grave will be backfilled, compacted, and then seeded or sodded.

PERSONALIZATION CHOICES

The personalization of a vault allows for reflection on a cherished memory at the graveside service. As shown below, meaningful choices are available to personalize the carapace (cover) on many vaults to help you prepare a final, fitting tribute at the cemetery.

WILBERT CUSTOM LEGACY SERIES

The Wilbert Custom Legacy Series program offers the opportunity to choose cherished images for a special memorial collage to honor a loved one.



PERSONALIZATION PLUS PROGRAM

The Personalization Plus program allows personalization of a vault with a specially chosen image.



WILBERT LEGACY SERIES PRINTS

Wilbert Legacy Series prints offer a unique method of personalization that is applied to the top of selected vault covers.



LIFE REFLECTIONS APPLIQUÉS PRINTS

A unique adhesion process applies special words or a defining image to the top of a burial vault.



WHAT IS A BURIAL VAULT?

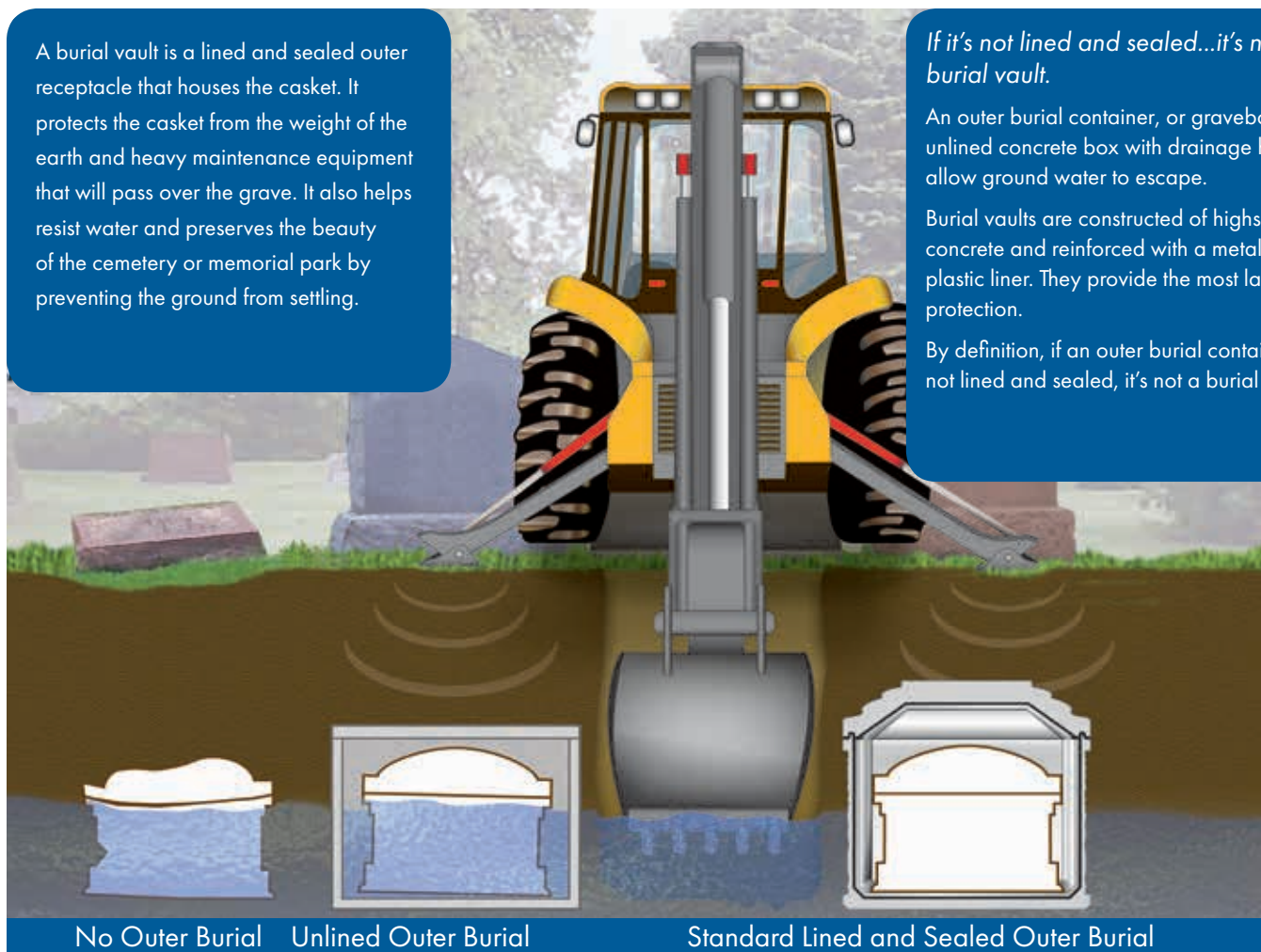
A burial vault is a lined and sealed outer receptacle that houses the casket. It protects the casket from the weight of the earth and heavy maintenance equipment that will pass over the grave. It also helps resist water and preserves the beauty of the cemetery or memorial park by preventing the ground from settling.

If it's not lined and sealed...it's not a burial vault.

An outer burial container, or gravebox, is an unlined concrete box with drainage holes to allow ground water to escape.

Burial vaults are constructed of high-strength concrete and reinforced with a metal or plastic liner. They provide the most lasting protection.

By definition, if an outer burial container is not lined and sealed, it's not a burial vault.



SELECTING A BURIAL VAULT

As you select the vault for your loved one, you should consider several factors – the vault's material, design and personalization options. The vault's construction is a major consideration.

Wilbert burial vaults are offered in three levels of protection: PREMIUM, STANDARD AND BASIC.

PREMIUM PROTECTION

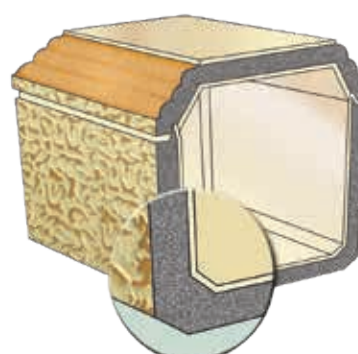
High-strength concrete, semi-precious corrosive-resistant metals and high-impact plastic combine for excellent durability.

STANDARD PROTECTION

High-strength concrete, stainless steel and high-impact plastic combine for durable inner protection in a double-reinforced vault.

BASIC PROTECTION

Single-reinforced vaults feature a concrete construction strengthened with plastic for extra support.



The WILBERT Collection

ULTIMATE PROTECTION – WILBERT BRONZE							\$15,000
	High Strength Concrete	Upgraded ABS Plastic Liner	Bronze Carapace & Concrete Cover	Personalization Options Available	Bronze Interior Reinforcement	Cover Fully Encased with Bronze	Base Fully Encased with Upgraded Plastic
PREMIUM PROTECTION – BRONZE TRIUNE							\$5,500
	High Strength Concrete	Upgraded ABS Plastic Liner	Bronze Carapace & Concrete Cover	Personalization Options Available	Bronze Interior Reinforcement		
STANDARD PROTECTION – STAINLESS TRIUNE							\$4,595
	High Strength Concrete	Upgraded ABS Plastic Liner	Stainless Steel Carapace & Concrete Cover	Personalization Options Available	Stainless Steel Interior Reinforcement		
STANDARD PROTECTION – CAMEO ROSE							\$4,595
	High Strength Concrete	Upgraded ABS Plastic Liner	Stainless Steel Carapace & Concrete Cover	Personalization Options Available	Stainless Steel Interior Reinforcement		
STANDARD PROTECTION – VETERAN							\$4,595
	High Strength Concrete	Upgraded ABS Plastic Liner	Stainless Steel Carapace & Concrete Cover	Personalization Options Available	Stainless Steel Interior Reinforcement		
BASIC PLUS PROTECTION – TRIBUTE							\$4,250
	High Strength Concrete	Upgraded ABS Plastic Liner	ABS Plastic Carapace & Concrete Cover	Personalization Options Available			
BASIC PLUS PROTECTION – VENETIAN							\$3,650
	High Strength Concrete	Upgraded ABS Plastic Liner	ABS Plastic Carapace & Concrete Cover	Personalization Options Available			
BASIC PROTECTION – CONTINENTAL							\$2,995
	High Strength Concrete	Basic Strentex Plastic Liner					
BASIC PROTECTION – MONTICELLO							\$2,450
	High Strength Concrete	Basic Strentex Plastic Liner					

In most areas of the country, state or local law does not require that you buy a container to surround the casket in the grave. However, many cemeteries require that you have such a container so the grave will not sink in. Either a graveliner or burial vault will satisfy these requirements.

If you are purchasing a vault from Harper's Community Funeral Home, we do not claim that the vault is air and/or watertight. Please refer to the manufacturer's warranty for the merchandise you purchase.

The vault company has a Set, Seal and Delivery fee of \$290 for each vault. When necessary, the vault company sets a tent for a \$35 fee. These fees will be added as cash advances.

The HALO Collection of Urns

\$750



Flag Series



Solitude Bronze Cube



Remembrance
Companion Urn



Reflections



Honor II



Square Walnut II

\$425



Blue Essence



Silver Birds



Purple Fora



Classic Pink Rose



Sensation



Golden Memory

\$375



Emerald Green



Living Legend



Medina Ebony



Median White



Mother of Pearl



Black Brass

\$275



Sapphire



Classica



Legend Companion Urn



Magic



Pearl Ebony



Pearl White

\$150



Ruby



Eternal Brass



Brown Token



Flair Copper

Flowers

Note: All casket sprays are priced as half casket sprays. Full couch sprays are an additional \$200 each. Ribbons (Wife, Husband, Mother, Father, etc.) are included.

Images below are subject to availability and season. Number of flowers vary per size of spray.



CASKET SPRAYS

Standard	\$425
Deluxe	\$495
Premium	\$650



STANDING SPRAYS

Standard	\$250
Deluxe	\$300
Premium	\$375



URN SPRAYS*

Standard	\$350
Deluxe	\$425
Premium	\$500

*Urn not included



Rose Boutonniere \$15.00 each

Other MERCHANDISE

	Range from
Monuments (add 20% to price for premium stone color selections)	\$3,295–\$7,500
Memorial Folders (1 st 200 printed, \$.15 each thereafter)	\$125
Prayer Cards (1 st 200 printed, \$.15 each thereafter)	\$125
Register Book	\$125
Thank You Cards (per box of 25)	\$18.75
Memorial Jewelry	\$100–\$2,500
Personalized Lid	\$250
Flag Case	\$150
Video Tribute (up to 200 pics/1 USB/\$10 each additional)	\$125
Portraits	\$125
Rosaries	\$75
Temporary Grave Marker	\$50
Crucifix	\$30
Cross	\$20
Bookmarks	\$2
Premium Hospitality Service for Visitation	\$225
(includes: meat and cheese tray, bread, chips, macaroni or potato salad, and cookies)	
Standard Hospitality Service for Visitation	\$175
(includes: meat and cheese tray and bread)	

* Above pricing does not include Indiana Sales Tax of 7.0%

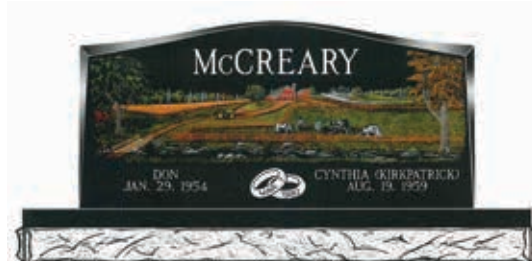




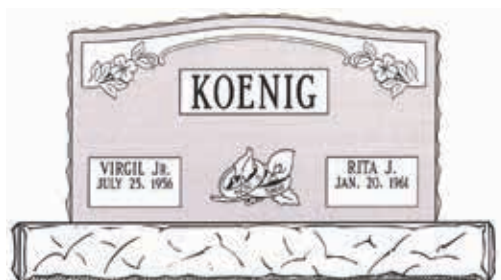
Companion Bronze
Moonlight Gray Backer
44 x 13 Bronze
48 x 17 Backer
\$7,500



Missouri Red
2-0 x 0-6 x 1-8 Serp Top P2 B/R/P
3-0 x 1-0 x 0-6; P1 B/R/P
\$4,500



McReary
3-6 x 0-6 x 1-8
4-6 x 1-0 x 6.0; 2" Polished Margin
\$5,500 Monument; \$2,295 Diamond Etched Scene



Barre Grey
3-0 x 0-6 x 1-8 P2 Serp Top B/R/P
4-0 x 1-0 x 0-6 P1 B/R/P
\$5,500



Single Bronze
Moonlight Gray Backer
24 x 12 Bronze
28 x 16 Backer
\$3,695



India Black
3-0 x 0-6 x 1-8 Serp Top P5
4-0 x 1-0 x 0-6; 2" Polished Margin
\$5,995



North American Pink Bevel
3-0 x 1-0 x 0-8 P1 B/R/P
\$3,650

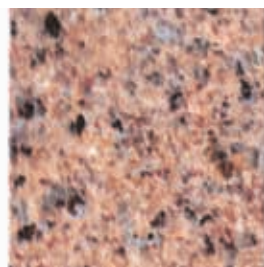


Maverick
1-2 x 0-9.5 x 0-2
\$395



Abby
0-9 x 0-17 x 0-2
\$375

STANDARD



Missouri Red



India Black*



Standard Mahogany



Colonial Rose



Keystone Blue

PREMIUM



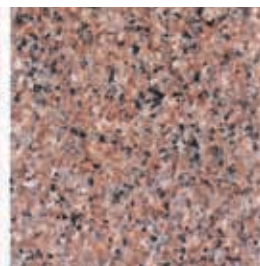
India Red*



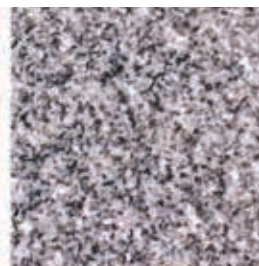
Galaxy



Premium Mahogany



Imperial Pink



Medium Barre

*Imported granite – allow 8 months



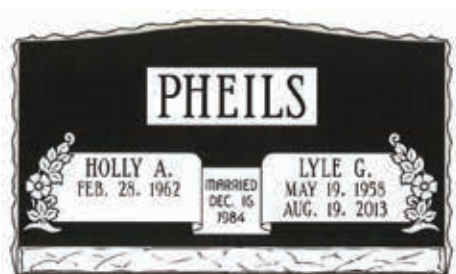
GVB-186 Bahama Blue
3-6 x 0-6 x 2-0 Roof Top Chamfers P5
4-6 x 1-0 x 0-6; 2" Polish Margin
\$7,995



GVB-682 Indian Mahogany
2-0 x 0-6 x 2-6 Oval Top Chamfers P5
3-0 x 1-0 x 0-6; 2" Polish Margin
\$5,500



GVB-190 Indian Black
3-0 x 0-6 x 1-10 1/2 Serp Top Chamfers P5
4-0 x 1-0 x 0-6; 2" Polish Margin
\$6,500



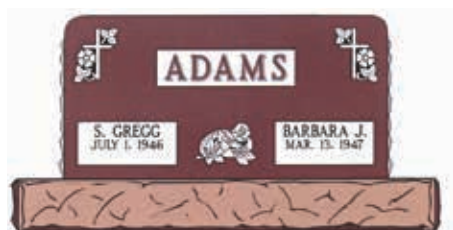
Galaxy Black
2-6 x 0-10 x 1-4 P1 Sept Top B/R/P
\$4,495



GVB-190 Himalayan Rainbow
2-0 x 0-6 x 2-6 Serp Top Chamfers P5
3-0 x 1-0 x 0-6; 2" Polish Margin
\$5,750



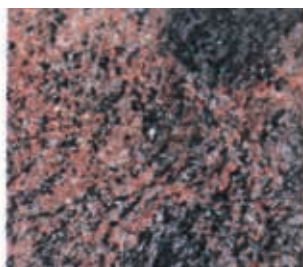
Paridiso
3-6 x 0-8 x 2-0 Serp Top P5
4-6 x 1-2 x 0-8; 2" Polish Margin
\$7,995



Premium Mahogany Slant Top Polish
3-0 x 0-10 x 1-6 P3 Flat with Rounds, B/R/P
4-0 x 1-2 x 0-6 P1
\$5,995



India Red*



Himalayan Rainbow*



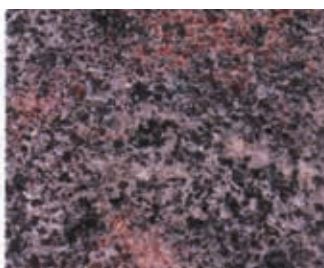
Cat's Eye Brown*



Bahama Blue*



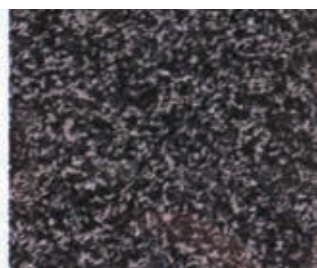
India Black*



Paridiso Blue*



India Mahogany*

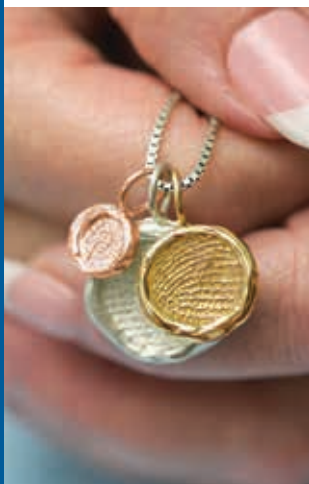


India Mist*

*Imported granite – allow 8 months

KEEPSAKE Jewelry

Keep the memory of your loved one with you forever with exquisite solid sterling silver jewelry. Each of these keepsakes can hold a small amount of cremated remains.



HERS



HIS



CRKT POCKET KNIFE

Small Knife \$160
Large Knife \$190



EARRINGS

Sterling Silver \$240
14K Y, W or R Gold \$1,250



TIE TAC/LAPEL PIN

Sterling Silver \$220



BANGLE BRACELET 7.5"

Sterling Silver \$270
14K Y, W or R Gold \$2,500



DOGTAG

Bronze \$175

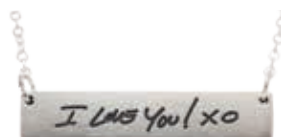


GRAND CHARM

Sterling Silver \$270
14K Y or W Gold \$1,200

GRAND CHARM
WITH 18" CHAIN

Sterling Silver \$300
14K Y, W or R Gold \$1,425



SIGNATURE SERIES
NARROW BAR

Sterling Silver \$170



ORGANICS SMALL CHARM
(10mm)

Sterling Silver \$100
14K Y or W Gold \$425

ORGANICS SMALL CHARM
WITH 18" CHAIN (10mm)

Sterling Silver \$126
14K Y, W or R Gold \$620

THERE'S NEVER BEEN A BETTER TIME TO PLAN AHEAD!

A 2017 national study* indicates 100% of survey respondents are satisfied with their decision to prearrange. Have you thoughts about it?

BENEFITS OF PLANNING AHEAD

- Relieves stress, anxiety and confusion because surviving family members don't need to make funeral arrangement decisions at an already highly emotional time.
- Frees family from risk, uncertainty, unnecessary worry and additional grief.
- Allows you to record your own unique wishes so your family will not have to guess what you would have wanted. You can design your own special services!
- Helps you and your loved ones make informed, thoughtful decisions instead of hurried ones that may lead to later regrets.
- Allows you to make these important decisions together... not alone.
- Removes possible conflict and misunderstanding about your wishes among family members.
- Reduces the chance your family will "emotionally overspend" on final arrangements.
- Lets you determine how much you can afford to spend on your funeral. Making numerous decisions in a calm setting leaves no financial surprises for your family.
- Eliminates financial strain on family members by giving you the opportunity to prepay your funeral expenses.
- Protects you against the effects of inflation by transferring the risk of inflation of funeral costs to the funeral home. Once you fund your prearrangement, your cost will never increase regardless of what prices are at the time of need.**
- Offers flexibility since prepaid funeral funds are assignable to almost any funeral home in the country.
- Gives you true peace of mind, knowing you have taken care of your final arrangements as your last gift to your loved ones.

BE SURE TO ASK HOW YOU CAN RECEIVE ALL THESE BENEFITS OF PLANNING AHEAD.

*Based on responses from 1,095 Homesteaders Life Company policy owners who prearranged and prefunded during May 2017.

**Rules vary by state, exceptions may apply. Please contact your funeral professional for additional information.

HARPER'S COMMUNITY FUNERAL HOME SUPPORTS
THE NEW HAVEN CHAMBER OF COMMERCE



NEW HAVEN

CHAMBER OF COMMERCE

Family Owned and Operated
since 1872

www.harperfuneralhome.com

General Manager: David Rousculp



740 SR 930 E
New Haven, IN 46774
260-493-4433

