

ROLFE FUNERAL HOME, INC.

"The Legacy of Caring Continues . . ."



2936 N.E. 36th Street • Oklahoma City, OK 73111
Phone: (405)424-4136 Fax: (405)424-7016
Website: www.rolfefuneralhome.com
E-mail: rolfefuneralhome@gmail.com



Mr. Jimmie D. Boldien Jr. - Licensed Funeral Director, CEO
Mrs. Joe Anna Sicard - President, Licensed Funeral Director, Pre-Arrangement Counselor
Colin Powell Boldien - Licensed Funeral Director and Embalmer

GENERAL PRICE LIST

These prices are effective as of September 8, 2022 – They are subject to change without notice.

To the Families We Serve:

As your public servant and provider, this Funeral Home is respectfully dedicated to those we serve. We are here to assist you in conducting the funeral service of your family's needs. We are experts at helping you and your families arrange, in detail, the different varieties of ceremonies, that acknowledges your loss, pays tribute to your loved one, and honors your faith. Our services are available to you 24-hours a day. Business office hours are 9:00 a.m. to 5:00 p.m. Monday through Friday. It is our mission, to provide you with an incomparable experience that honors your loved one through tributes and services, that can only meet the best of expectations provided here, at Rolfe Funeral Home. **Thank you for the opportunity to serve your family.**

PAYMENT POLICY OPTIONS OFFERED

During arrangements, important decisions are made regarding services and merchandise. As a convenience to you, we will cash advance cash on your behalf for services you request, such as death certificates, honorariums, necessary government permits.

Payment for goods, services, and cash advances are expected and finalized **72 hours** prior to scheduled services.

Any forwarding or receiving of a families loved one, will require payment in advance of charges incurred at funeral home. For your convenience we accept all of the following credit cards listed as well as cash, cashiers checks, money orders, and an **approved** irrevocable insurance policy or assignment. Any first approval of the policy or assignment will incur a **6.5% service fee** from insurance processing company this firm uses, that will expedite and make those designated funeral funds available to the funeral home, at time of services. Rolfe Funeral Home does not receive portion of this fee. Due to the complexity and time involved we are unable to accept payments from estates.



Disclosure:

The goods and services shown below are those we can provide to our customers. You may choose only the items you desire. However, any funeral arrangements you select will include a charge for our basic services and overhead. If legal or other requirements mean you must buy any items you did not specifically ask for, we will explain the reason in writing on the statement we provide describing the funeral goods and services you selected. This list does not include prices for certain items requested at time of arrangements such as cemetery or cemetery services, flowers, programs, video slideshow, and cemetery headstones. The price for these items will be shown on your itemized statement of funeral services and goods. We reserve the right to charge you for our services in buying these items for you.

❖ PROFESSIONAL SERVICES

1. BASIC SERVICES OF FUNERAL DIRECTOR AND STAFF.....\$2,120.00

➤ Our charge for the services of Funeral Director and Staff includes, but is not limited to, staff to respond to initial requests for service, arrangement conference with family or responsible party, coordination with cemetery, crematory, or other parties involved with the final disposition of the deceased, preparation and filing of necessary notices, authorization and permits. Also included in this charge are overhead expenses such as professional licensing and accounting fees, insurance, building, and utility expenses, parking lot and grounds, maintenance, equipment, furnishings, record keeping, and secretarial and administrative expenses. This fee for our basic services and overhead will be added to the total cost of the funeral arrangements you select.

❖ PREPARATION PROCEDURES

1. EMBALMING.....\$1250.00

➤ Except in certain special cases, embalming is not required by law. Embalming may be necessary, however, if you select certain funeral arrangements, such as a funeral with viewing. If you do not want embalming, you usually have the right to choose an arrangement that does not require you to pay for it, such as direct cremation or immediate burial.

❖ OTHER PREPARATION PROCEDURES

1. BATHING, DISINFECTING, & OTHER CARE (WITH NO EMBALMING).....\$295.00

2. AUTOPSY, TISSUE/BONE DONATION, OVERSIZE(OBESE).....\$395.00

3. DRESSING, COSMETIZING, & CASKETING.....\$445.00

(Hair Preparation not included, see Cash Advances)

4. DRESSING AND CASKETING NON EMBALMED REMAINS THAT ARE AUTOPSY, BONE/TISSUE DONOR, OVERSIZE(OBESE).....\$285.00

5. RECONSTRUCTIVE RESTORATION (WAXING).....\$75.00(per hour)

SPECIAL CARE OF EMBALMING REMAINS AUTOPSY, OBESE, BONE/TISSUE DONOR.....\$200.00

6. REFRIGERATION(PER DAY).....\$175.00

(in cases refrigeration is necessary, in lieu of embalming or disposition)

■ **IMMEDIATE BURIALS.....\$1,950.00 to \$3,500.00**

(WITHOUT EMBALMING WITHIN 48 HOURS)

➤ This charge for immediate burial includes removal of remains, local transportation to the cemetery, necessary authorizations, and basic service of Rolfe Funeral Home Staff. This charge does not include the use of facilities and staff for any visitation of ceremony, public or private, prior to burial, cemetery charges, or outer container.

1. IMMEDIATE BURIAL WITH CASKET PROVIDED BY PURCHASER<Standard>.....\$3,500.00

<Oversize>.....\$3,700.00

2. IMMEDIATE BURIAL WITH ALTERNATIVE CONTAINER<Standard>.....\$1950.00

(RIGID WOOD BASE or BIO-DEGRADABLE)

<Oversize>.....\$2150.00

❖ **DIRECT CREMATION.....\$1,750.00 to \$2,505.00**

(WITHOUT EMBALMING WITHIN 48 HOURS)

❖ This charge for direct cremation includes removal of remains, local transportation to crematory, necessary authorizations, and basic services of Rolfe Funeral Home Staff. Cremation (alternative) containers encase the remains and can be made of materials like fiberboard or composition materials(with or without and outside covering). The containers we provide are cardboard, particle board, or unfinished wood box. Brief private view prior to cremation will be the customer's choice as they can choose from either of the following:

A. DIRECT CREMATION WITH ALTERNATIVE CONTAINER(no viewing prior to cremation)....\$1,750.00

B. DIRECT CREMATION WITH ALTERNATIVE CONTAINER(private view only).....\$2,045.00

C. DIRECT CREMATION WITH ALTERNATIVE CONTAINER(minimal prep, private view only).\$2,505.00

AUTOPSY, OVERSIZE, TISSUE DONATION FEE included

❖ **PERSONALIZED CREMATION PACKAGE SERVICES.....\$3,650.00 to \$4,250.00**

(EMBALMING INCLUDED)

❖ Rolfe Funeral Home is pleased to offer the following list of commonly selected cremation packages which afford you to select the appropriate arrangements for your loved one. NOTE: The following packages include only the items listed. You may select additional merchandise and services; however, you may not delete or substitute any items from the packages. Merchandise and cash advance items are additional.

A. PUBLIC FAMILY VIEWING(WITHOUT CASKET).....\$3650.00

❖ This service charges for only the embalming of your loved one dressed and placed on a decoratively dressed observing table, for both family and public visitations. Visitation is for one day of visitation prior cremation. Also includes, removal of remains, local transportation to funeral home and to crematory, necessary preparations for your loved one, register guest book, necessary authorizations, permits,the cremation process itself, and basic services of Rolfe Funeral Home Staff. Any additional funeral merchandise, ceremony or services, other than a visitation whether its, church or chapel, casket purchased or requested, will be an additional cost to the price above.

▪ **USE OF FACILITIES**

- 1. **CHURCH OR CHAPEL SERVICE WITH USE OF ROLFE F.H. STAFF(Mon.-Fri.)**.....\$595.00
- 2. **CHURCH OR CHAPEL SERVICE WITH USE OF ROLFE F.H. STAFF(Saturday)**.....\$ 675.00
- 3. **GRAVESIDE (IN LIEU OF CHURCH OR CHAPEL SERVICE)**.....\$300.00
- 4. **MEMORIAL SERVICE**.....\$300.00
- 5. **CHAPEL RENTAL FOR SERVICE W/O ROLFE PROFESSIONAL SERVICES**.....\$895.00

▪ **USE OF EQUIPMENT AND FACILITIES**

- 1. **VIEWING/VISITATION**\$295.00
- USE OF EQUIPMENT FOR CHAPEL, VISITATION, & GRAVESIDE.....\$300.00
- Use of Facilities and Staff for Rosary, Prayer, or Wake Service \$495.00

SECURITY REQUIRED FOR ALL SERVICES THAT MAY HAVE ANY POTENTIAL HARM TO STAFF, FAMILY, OR PUBLIC.....\$100.00/hr, 3 hr. min, 2 officers minimal.

▪ **USE OF MOTOR TRANSPORTATION**

- 1. **TRANSFER OF REMAINS TO CREMATORY**.....\$285.00
- 2. **TRANSFER OF REMAINS TO FUNERAL HOME(within 50miles-\$3.00 per mile beyond)**.....\$325.00
- 3. **HEARSE FOR CHAPEL, CHURCH or GRAVESIDE(within 50miles-\$3.00 per mile beyond)**....\$525.00
- 4. **LIMOUSINE(within 50 miles-\$3.00 per mile beyond)(use for 3 hours only)**.....\$495.00
- ***REPAST WAITING UP to 45min NO EXTRA FEE***BEYOND 45 min/3 hours.....\$100.00(per hr.)
- 5. **HORSE DRAWN CARRIAGE(PENDING AVAILABILITY)**.....\$2,000 and up
- 6. **POLICE ESCORTS(one route only church to cemetery or house to church or chapel 2 bike min)**....\$300.00
- 7. **SPRINTERS(PENDING AVAILABILITY)**.....\$750.00

SATURDAY FEE'S VARY

In most areas of the country, state, or, local law does not require that you purchase a container to surround the casket in the grave. However, MOST of your local perpetual care cemeteries require that you have such a container so the grave will not sink. Either a burial vault or a concrete burial box will satisfy these requirements.

Cost for grave services and a tent are often included in the cemetery's opening and closing fee. However, if the family chooses to want to secure payment with the cemetery chosen or designated, the funeral home will advance monies to the appropriate cemetery. We charge this convenience to the responsible party.

Disclaimer of Warranties

Our funeral home makes no representations or warranties regarding caskets or outer burial containers, or urns(both for adults and infants). The only warranties, expressed or implied, granted in connection with goods sold with this funeral services are the express written warranties, if any, extended by the manufacturers thereof. No other warranties, including the implied warranties of the merchantability and fitness for a particular purpose are extended.

A copy of the Casket, Urn, and Outer Burial Price List are available to those requesting such in person. The Current Oklahoma City Sales Tax is figured on merchandise at 8.675%

- **OVERSIZE CASKET AND/OR OVERSIZE VAULT ADDITIONAL CHARGE**.....\$1,000.00
- **CASKETS AVAILABLE FROM**.....\$1,650.00 and up
- **OUTER BURIAL CONTAINERS AVAILABLE FROM**.....\$1,225.00 and up
- **BURIAL GARMENTS START AT**.....\$350.00 and up
- **URNS START AT**.....\$85.00 and up

❖ **B. TRADITIONAL CREMATION SERVICE PACKAGE.....\$4,250.00**
This service package includes the basic services of Funeral Director and Staff, embalming, other preparation of your loved one, use of facilities, use of our personal rental casket metal or wood, use of our chapel, standard register book, and acknowledgment cards, equipment and staff for visitation/viewing/funeral ceremony; transfer of remains to funeral home, transfer of remains to crematory and crematory fee. Services do not include applicable states and city taxes, cash advance items or auto usage. The prices below represent a package price. Substitutions or deletions other than noted are not allowed. This package does not include any cash advance items such as and Urn or any Keepsakes.

➤ **TRANSFER OF REMAINS TO ANOTHER LOCAL FUNERAL HOME.....\$1,895.00**

➤ **FORWARDING OF REMAINS TO ANOTHER FUNERAL HOME..... \$1,995.00**

Our charge for this service includes removal of your loved one, embalming, hearse transportation, necessary services of staff, coordination with receiving funeral home, necessary authorizations, and shipping container required by airline. This charge does not include the following: casket, viewing, funeral ceremony, or airline shipping charges.

This charge applies to shipment within the continental United States.

➤ **RECEIVING OF REMAINS FROM ANOTHER FUNERAL HOME.....\$1,995.00**

This charge includes pickup of your loved one from designated airline cargo, local transportation to funeral home and/or cemetery, and basic services of staff. This charge does not include the following: Any visitations, rites, or funeral ceremony, cemetery charges, use of limousine services, outer burial container if necessary, or register book and thank you cards.

▪ **MISCELLANEOUS MERCHANDISE/CASH ADVANCES**

- Personalized hand-held fans (per 100) \$350.00
- Clergy Gratuity (Family should pay Minister directly) \$150.00
- Organist \$150.00
- Vocalist \$125.00
- Beautician Gratuity Service Starting at \$150 and up
- Master Barber Gratuity Service..... \$60.00
- Original Certified Death Certificate.....\$36.00
- Additional Certified Copies of Death Certificate.....\$15.00
- Flowers (casket spray outsourced).....\$375 and up
- Standing Flowers (easel stands or baskets outsourced).....\$400 and up
- Three Piece Flower Ensemble(outsourced).....\$600 and up
- Funeral Programs(std. fold 50 or more)(outsourced).....\$70.00 and up
- Video Tributes (outsourced).....Starting at \$165 and up
- Use of projector in Rolfe Memorial Chapel or Church(pending availability).....\$125.00
- Classified Notices – Daily Oklahoman Current Rate Per Line
- Second Day listing of Service Information in Daily Oklahoman-Additional . Current Rate
- Monogram Personalization \$65 and up
- Dove Release \$350.00
- Casket Head Panel (custom) \$400.00 and up
- Celebration Covers (Personalized Blankets) \$350.00 and up
- Headstones Prices Vary

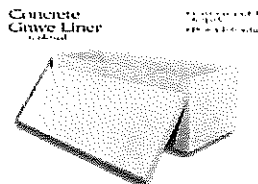
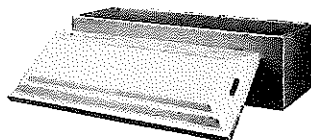
- Use of cemetery equipment (Vault Company) Prices Vary
- Acknowledgment Stationery (Box of 25) \$30.00
- Prayer Cards (per 100 cards, printing included) \$40.00
- Crucifix \$25.00
- Temporary Marker \$100.00
- Memorial Book (Leather bound) \$75.00
- Memorial Book (Paper bound) \$35.00
- Disaster pouch \$250.00
- Air Trays (needed for air shipping) \$400.00
- Combo Air Tray Units (Remains only).....\$350.00
- Zeigler container \$1950.00
- Rental Casket for visitation and/or Funeral Service \$1,495.00
- Rental flowers for visitation and/or Funeral Service. \$95.00
- Memory Plaques.....\$100.00 to 250.00
- Flag Case (Wood).....\$200.00
- ****Mailing Fee for Cremated Remains****\$150.00 to \$495.00

**ROLFE FUNERAL HOME, INC.
CASKET & VAULT PRICE LIST
Prices Effective December 6, 2021**

Effective Prices are Subject to Change Without Notice

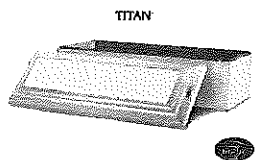
#30 Concrete Box
\$1,225.00

Delphi Vault
1,975.00

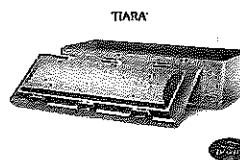


←-----
Oversize Concrete Box
\$1,525.00

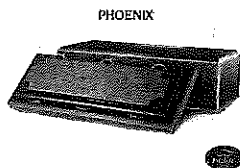
Titan (Monticello) Vault
\$2,175.00



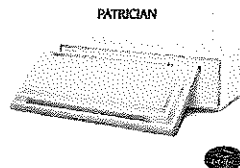
Tiara Vault
\$2,425.00



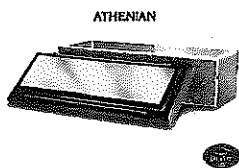
Phoenix Vault
\$2525.00



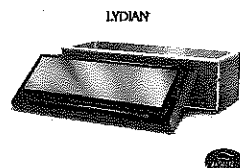
Patrician Vault
\$2,725.00



Athenian Vault
\$3,825.00



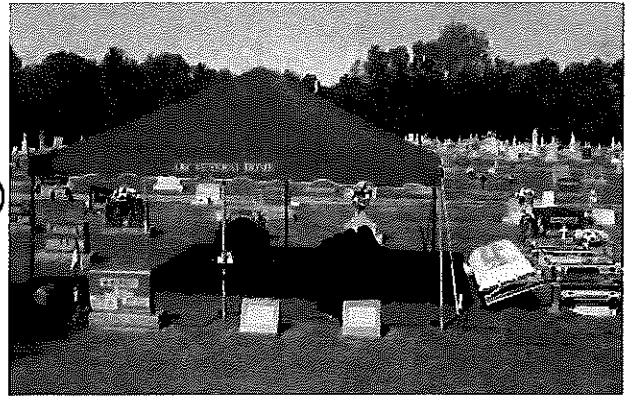
Lydian Vault
\$4,625.00



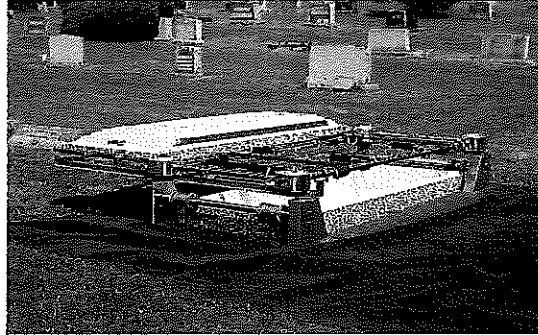
Rural or Country Cemetery Setup: Monday —
Friday \$1,050.00

Saturday Cemetery Setup (Tent, Chairs, and Greens)
\$1,175.00

Saturday Cemetery Services — Add \$425.00



Lowering Device Only
\$575.00



Services arriving at the cemetery after 4:30 p.m. \$425.00

Services remaining in the cemetery after 6:00 p.m. —

Add in addition to above price \$500.00